

Chapter- 6

Electromagnetic induction

Electromagnetic Induction :- An Introduction

- In 1831, Michael Faraday suggested that if electricity moving in a wire produces magnetism, then opposite might be true.
- He moved a magnet in and out of a coil of wire, and electricity flow was observed in the coil. This is called electromagnetic induction.
- E.M. I is used in hundreds of machines and devices, like electric motor, generator etc.

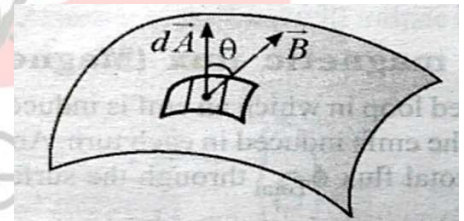
Magnetic Flux: -

The magnetic flux through small element of surface $d\vec{A}$ is defined as.

$$d\phi_B = B_{\perp} dA$$

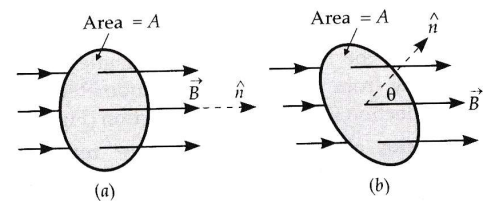
$$= B \cos \theta dA$$

$$= \vec{B} \cdot d\vec{A}$$



- Total magnetic flux through the surface $\phi_B = \int \vec{B} \cdot d\vec{A}$
- When \vec{B} is uniform over a plane surface with total area A

$$\phi_B = B_{\perp} A = BA \cos \theta$$

**Note:-**

- Physically it represents total lines of induction passing through a given area
- Through lines of force are imaginary, flux is a real scalar physical quantity with dimensions.

$$[\phi_B] = [B][S] = \left[\frac{F}{IL} \right] [S] = \frac{[MLT^{-2}]}{[AL]} [L^2]$$

$$\Rightarrow [\phi_B] = [ML^2T^{-2}A^{-1}]$$

- S.I unit of magnetic flux

As $[ML^2T^{-2}]$ corresponds to energy.

Its S.I unit will be $\frac{\text{joule}}{\text{Ampere}} = \frac{\text{joule} \times \text{sec}}{\text{coulomb}} = \text{volt} \times \text{sec}$

and is called **weber (wb)** or $\frac{\text{Tesla}}{\text{meter}^2}$

C.G.S unit \rightarrow **Maxwell (Mx)**

$$1\text{wb} = 10^8 \text{Mx}$$

ODM EDUCATIONAL GROUP

- When the uniform field is along the surface (i.e field touches the surface tangentially)

$$\theta = 90^\circ$$

$$\phi_B = BA \cos 90^\circ = 0 \text{ (minimum)}$$

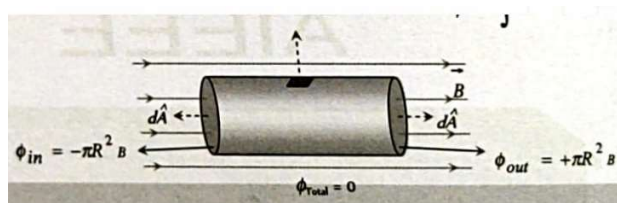
- When the uniform field is normal to the surface

$$\theta = 0^\circ$$

$$\phi = BA \cos 0^\circ$$

$$= BA \text{ (maximum)}$$

- Positive and negative flux. In case of a body present in a field either uniform or non-uniform, outward flux is taken to be positive while inward negative.

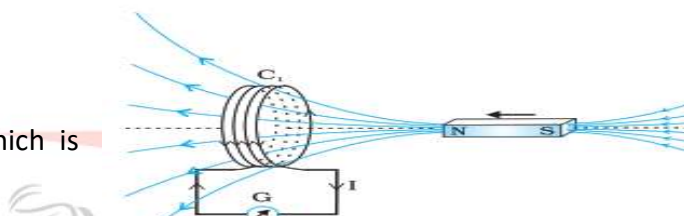


[Uniform field, Total flux = 0]

The Experiments of Faraday and Henry: -The understanding of electromagnetic induction is based on a long series of experiments carried out by Faraday and Henry.

Experiment – 1 (Current induced by magnet)

(Bar magnet is pushed towards the coil which is connected to a sensitive galvanometer)

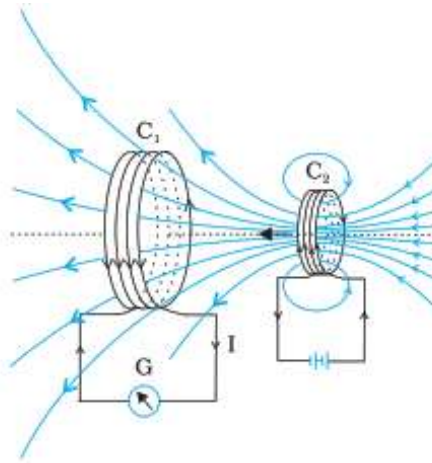


Observations:-

- | | | |
|---------------------------------|---|----------------------------------|
| (a) Bar magnet of rest | - | No deflection in galvanometer |
| (b) Magnet moves toward coil | - | Deflection in one direction |
| (c) Magnet moves away from coil | - | Deflection in opposite direction |
- (d) When the south pole of magnet is moved towards or away from the coil, the deflection in galvanometer are opposite with the North Pole for similar movement.
- (e) When the magnet is pushed towards or pulled away from coil faster, the deflection is found to be larger.

Conclusion:-

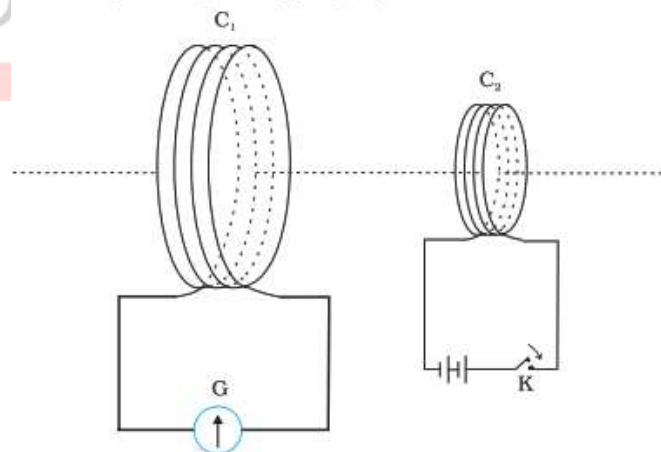
It is the relative motion between the magnet and the coil that is responsible for generation (induction) of electric current in the coil.

Experiment – 2 (Current induced by current)

Here the bar magnet is replaced by a second coil C_2

Observations:- When C_2 is moved away or towards the coil C_1 the galvanometer shows the deflection like previous expt.

Conclusion:- It is the relative motion between the coils that induces the electric current.

Experiment – 3, [Current induced by changing current]

Here relative motion is not an absolute requirement coils C_1 and C_2 held stationary

Observations:-

When tapping key is pressed galvanometer shows a momentary deflection

If the key is held pressed continuously, there is no deflection

When key is released, a momentary deflection is observed again (but in opposite direction)

When an iron rod is inserted in to the coil along their axis, the deflection increases drastically

Faraday's Laws of Electromagnetic Induction:-

On the basis of experiments (described above) Faraday concluded that.

- (a) Whenever there is change in magnetic flux linked with circuit, an emf is induced in it. The phenomenon is called electromagnetic induction
- (b) The induced emf last as long as the change in flux continues.
- (c) The magnitude of the induced emf in a circuit is equal to the time rate of change of magnetic flux through the circuit.

Mathematically $|\varepsilon| = \frac{d\phi}{dt}$

- (d) The direction of induced emf is such as to oppose the change or cause which creates it. This law is called **Lenz's Law**.

All the above statements taken together are known as Faraday's laws of electromagnetic induction and are expressed analytically as. $\varepsilon = -\frac{Nd\phi}{dt}$

-ve sign shows that if flux increases ε is -ve and vice versa.

Note:-

- In case of E.M.I an emf $|\varepsilon| = \frac{d\phi}{dt}$ always existed, either the circuit is closed or open but the current will exist only if circuit is closed.
- If the circuit is closed, induced current

$$I = \frac{\varepsilon}{R} = -\frac{Nd\phi}{Rdt} \quad (\text{Where } R \text{ is the total resistance of the circuit})$$

- Induced charge $dq = Idt = -\frac{Nd\phi}{R}$ (Independent of time)
- induced power $(P) = \varepsilon I = \frac{N^2}{R} \left(\frac{d\phi}{dt} \right)^2$
- Induced field: - Time varying magnetic field induces electric field which is related to induced emf as $\varepsilon = \int E_{in} \cdot d\ell$

Since $\int E \cdot dl \neq 0$, this indicates induced electric field is **non-conservative** field.

Question: - In Faraday's experiment

(a) What would you do to obtain a large deflection of galvanometer.

(b) How would you demonstrate the presence of an induced current in the absence of a galvanometer [NCERT]

Solution:-

(a) To obtain a large deflection, the steps can be taken are

- Use of a soft iron rod inside the coil C_2
- Use of powerful battery with coil
- Motion of the arrangement rapidly towards the coil

(b) Using a small bulb. The relative motion between two coils will cause the bulb to glow and thus demonstrate the presence of an induced current.

Question:-

A square loop of side 10cm and resistance 0.5Ω is placed vertically in the east-west plane. A uniform magnetic field of 0.1 T is set up across the plane in the north-east direction. The magnetic field is decreased to zero in 0.7 s at a steady rate.

(a) Determine the magnitudes of induced emf (b) Determine the induced current during this interval [NCERT]

Solution:-

$$\phi = BA \cos \theta$$

Initial flux = $BA \cos 45^\circ$ [\therefore Area vector makes 45° with field]

$$= (0.1 \times 10^{-2}) \frac{1}{\sqrt{2}}$$

Final flux = 0

$$(a) \varepsilon = \frac{\phi_{\text{initial}} - \phi_{\text{final}}}{\Delta t} = 1 \text{ mV}$$

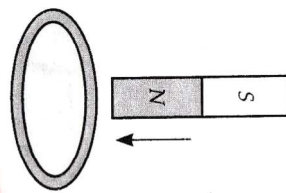
$$(b) I = \frac{\varepsilon}{R} = \frac{10^{-3} \text{ V}}{0.5 \Omega} = 2 \text{ mA}$$



Lenz's Law:-

Statement:- The direction of induced emf is such as to oppose the cause that creates it.

Example – 1, (Attraction and repulsion concept)



Suppose a N-pole of bar magnet is being pushed towards the close coil.

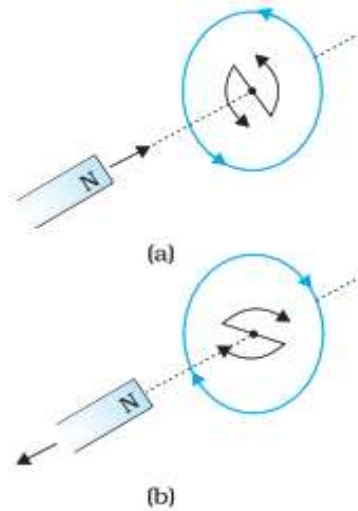
As it moves, the magnetic flux through the coil increases

Current is induced in the coil

The direction of induced current in coil is in such a direction that it opposes the increase in flux

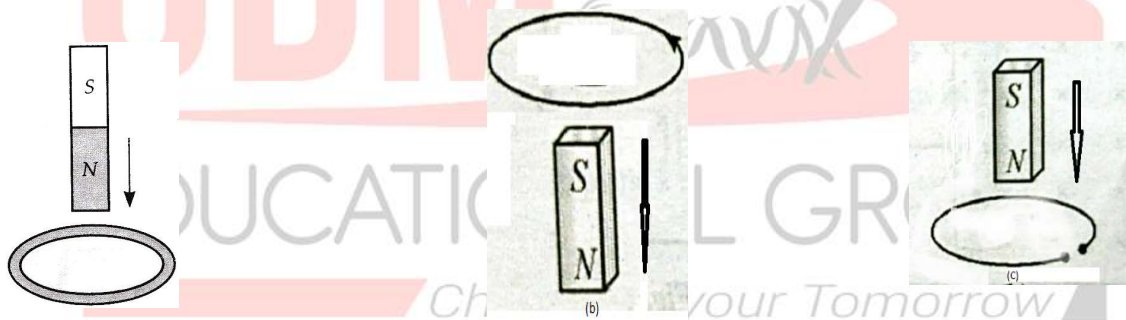
This is possible only if the current in the coil is in a counter – clock wise direction w.r.t an observer situated on the side of the magnet.

Similarly



Note:- The direction shown by N and S indicate the directions of induced current.

Question:- A copper ring is held horizontally and a bar magnet is dropped through the ring with its length along the axis of ring as shown in following diagrams. State whether its acceleration a is equal to greater than or less than the acceleration due to gravity g .



Solution:-

$$(a) a = \frac{mg - F}{m} = g - \frac{F}{m}$$

Where $mg \rightarrow$ wt of the bar magnet

$F \rightarrow$ Force of repulsion on approaching magnet

Hence $a < g$

$$(b) a = \frac{mg - F}{m} = g - \frac{F}{m}$$

$$\Rightarrow a < g$$

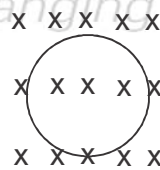
Here, F is the force of attraction on receding magnet

(c) Here an emf will be induced in the ring but no current will flow. So the coil can no more oppose the approach of magnet. Hence $a = g$

Example – 2, (Cross or dot magnetic field increasing or decreasing concept) If cross magnetic field passing through a loop increases then induced current will produce dot magnetic field. Similarly if dot magnetic field passing through a loop decreases then induced current will produce dot magnetic field.

Question:-

A circular loop is placed in magnetic field $B = 2t$. Find the direction of induced current produced in the loop.



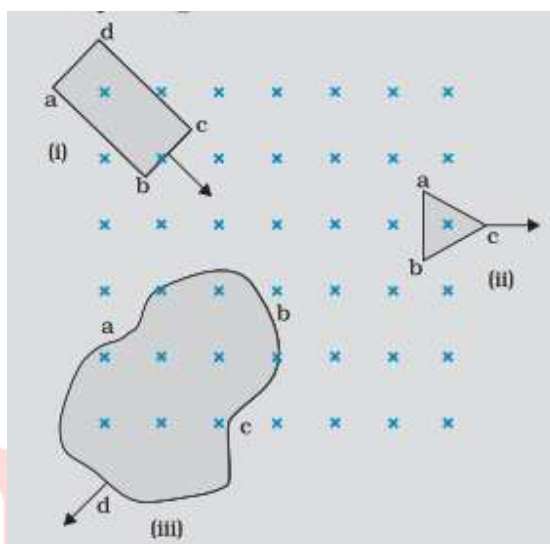
Solution:- $B = 2t$ means, \otimes magnetic field passing through the loop is increasing

So induced current will produce dot magnetic field.

To produce \odot magnetic field, induced current should be anti-clock wise.

Question:-

Figure shows planar loops of different shapes moving out of or into a region of magnetic field which is directed normal to the plane of the loop away from the reader. Determine the direction of induced current in each loop using Lenz's law.



Solution:-

- (a) Due to the motion of loop abcd in to the region of magnetic field. The cross magnetic field \otimes through loop increases. Then induced current will produce dot magnetic field to produce \odot magnetic field, induced current should be anti-clock wise (follow along the path bcdab)
- (b) Due to outward motion of triangular loop (abc) the cross magnetic field \otimes through abc decreases. Then induced current will produce cross magnetic field to produce \otimes magnetic field, induced current should be clock wise (follow along the path bacb)
- (c) Clock wise (along path cdabc)

Question:-

A close loop is held stationary in the magnetic field between the north and south poles of two permanent magnets held fixed. Can we hope to generate current in the loop by using very strong magnets? (NCERT)

Solution:-

No, however strong the magnet may be, current can be induced by changing the magnetic flux through the loop.

Question:-

A closed loop moves normal to the constant electric field between the plates of a charged capacitor. Is a current induced in the loop

(a) When it is wholly inside the region between the capacitor plates?

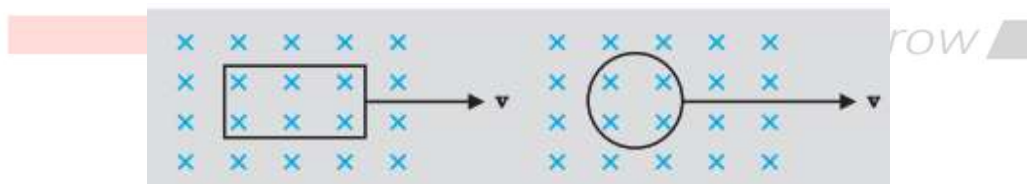
(b) When it is partially outside the plates of the capacitor?

Solution:-

No current is induced in either case. Because current cannot be induced by changing the electric flux

Question:-

A rectangular loop and a circular loop are moving out of a uniform magnetic field region to a field free region with a constant velocity v . In which loop do you expect the induced emf to be constant during the passage out of the field region? The field is normal to the loop.

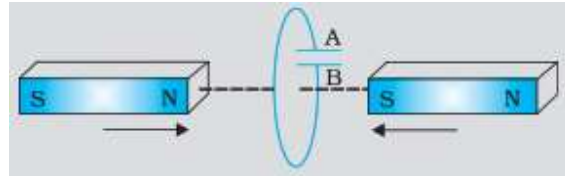


Solution:-

The induced emf is expected to be constant only in the case of rectangular loop. In the case of circular loop the rate of change of area of the loop during its passage out of the field region is not constant, hence induced emf will vary accordingly.

Question:-

Predict the polarity of the capacitor in the situation described by following figure.

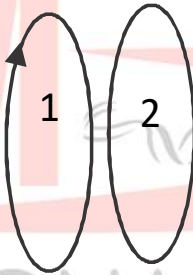


Solution:- The polarity of plate A will be +ve w.r.t plate B in the capacitor.

Example:- Attraction and repulsion between two loops facing each other of current in one loop is changed.

Question:-

Two loops are facing each other as shown in the figure state whether the loops will attract each other or repel each other if current I_1 is increased.



Solution:-

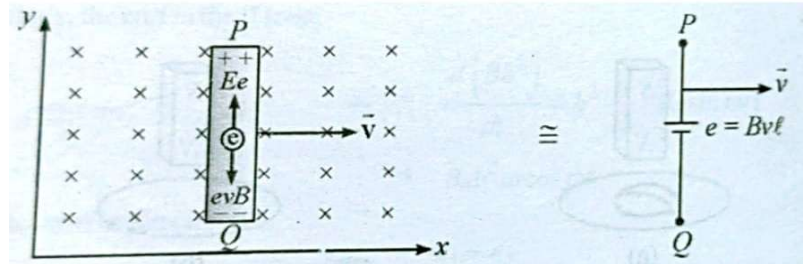
If current I_1 is increased then induced current in loop 2 (say I_2) will be in opposite direction. Now two loops having current in opposite directions repel each other.

Motional Electromotive Force:-

It is the emf induced in a conductor moving through a constant magnetic field.

Cause of motional emf:-

Following figure shows a conducting rod of length L moving with constant velocity \vec{v} which is \perp to the uniform magnetic field \vec{B} directed in to the paper.



From the diagram, the magnetic force on the free electrons $\vec{F}_m = -2(\vec{v} \times \vec{B})$ electrons move towards end Q within the rod, hence end Q becomes -ve w.r.t P.

Now an electric field \vec{E} is setup within the rod which exert a force on free electrons in opposite to \vec{F}_m .

At equilibrium $\vec{F}_e + \vec{F}_m = 0$

$$\Rightarrow -e\vec{E} + (-e)(\vec{v} \times \vec{B}) = 0$$

$$\Rightarrow \vec{E} = -\vec{v} \times \vec{B}$$

\therefore The induced emf across the rod $\varepsilon = \int \vec{E} \cdot d\vec{\ell}$

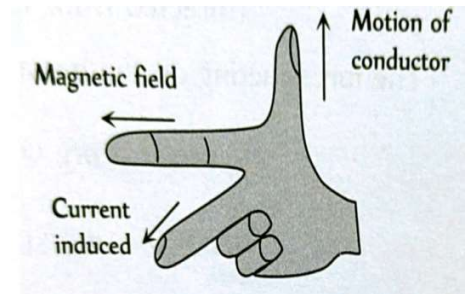
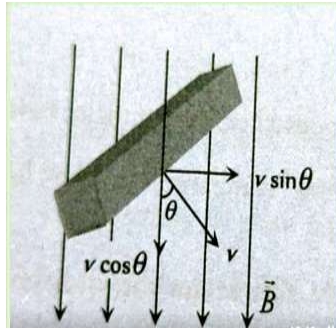
$$\Rightarrow \varepsilon = \int (\vec{v} \times \vec{B}) \cdot d\vec{\ell}$$

$$\Rightarrow \varepsilon = \int [\hat{v} \times B(-\hat{k})] \cdot d\ell(\hat{j})$$

$$\Rightarrow \varepsilon = B\ell v$$

Fleming's right hand rule:-

Though in general the direction of emf or current is determined by Lenz's law, in case of motion of a straight conductor in a magnetic field it can also be determined by the so-called Fleming's right hand rule.

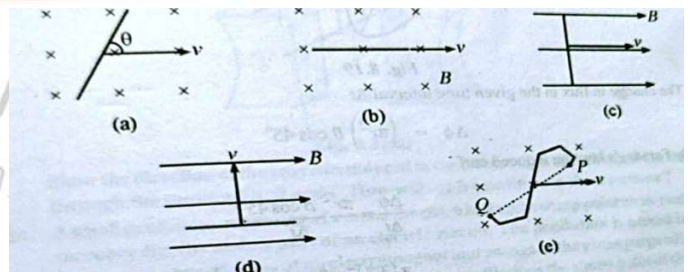


Statement: -

The thumb, forefinger and the middle figure of right hand are stretched mutually perpendicular to one another. If the thumb represents the direction of the conductor, the forefinger in the direction of magnetic field, then the middle figure points in the direction of induced emf or current in the conductor.

Question:-

Find the induced emf across the ends of the conducting rod of length l in the following situations.



Solution:-

We know $\epsilon = \int (\vec{v} \times \vec{B}) \cdot d\vec{l}$

- (a) $Bvl \sin \theta$ (b) 0 (c) 0 (d) 0

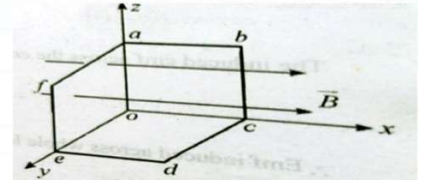
(e) If PQ line makes angle θ with velocity vector then $\epsilon = B(v \sin \theta)PQ$

Question:-

12 wires of equal length are connected in form of skeleton of the cube having velocity v in the direction of magnetic field.

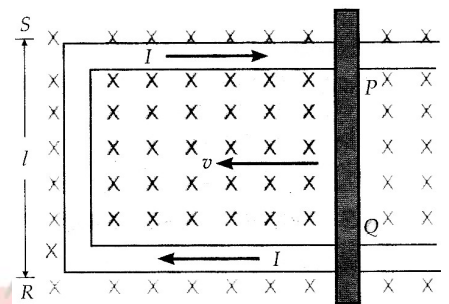
(a) Find the emf in each arm

(b) If the cube moves perpendicular to the field, what will be the induced emf in each arm?



Motional emf in a moving rod slides along a stationary U-shaped conductor.

Figure shows a rectangular conductor PQRS in which the arm PQ is free to move (to left) with constant velocity v



Method- I, the magnetic flux enclosed by the loop PQRS

$$\phi_B = B\ell x$$

Since x is changing with time

$$\varepsilon = -\frac{d\phi_B}{dt} = -\frac{d(B\ell x)}{dt} = -B\ell \frac{dx}{dt} = B\ell v$$

Where we have used $\frac{dx}{dt} = -v$, speed of conductor PQ

Method – II, when conductor moves \perp to \vec{B} , all the charges experience same force ($= qvB$) in rod PQ. The work done in moving the charge from P to Q through a distance ℓ .

$$w = F\ell = qvB\ell$$

Since emf is the work done per unit charge

$$\varepsilon = \frac{w}{q}$$

$$= \frac{qvB\ell}{q} = B\ell v$$

Note:-

(a) Induced current in the loop, $I_{\text{in}} = \frac{\varepsilon}{R} = \frac{B\ell v}{R}$

(Where r resistance of arm PQ. Total resistance of remaining arm u negligible compared to R)

(b) Magnetic force on the conductor opposing the motion of the rod.

$$F_m = BI_{\text{in}}\ell = B\left(\frac{B\ell v}{R}\right)\ell = \frac{B^2 v \ell^2}{R}$$

(c) Rate of doing work (power dissipated) in maintaining the motion of rod by pulling force F.

$$P = \frac{dw}{dt} = F \cdot v = \frac{B^2 \ell^2 v^2}{R}$$

(d) Electrical power dissipated through the resistor (Joule loss)

$$P_{\text{thermal}} = I_{\text{in}}^2 R = \left[\frac{B\ell v}{R}\right]^2 R = \frac{B^2 v^2 \ell^2}{R}$$

Phenomenon of electromagnetic induction in accordance with Lenz's law represents conservation of energy.

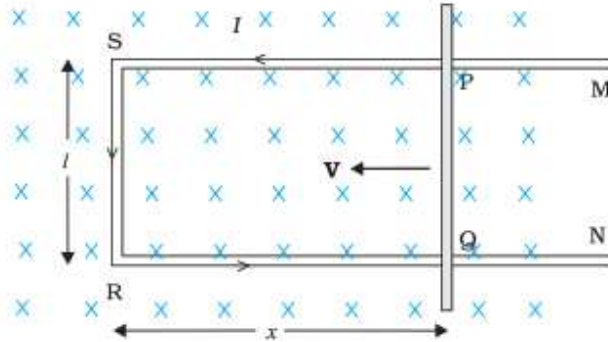
Qualitative treatment:-

Suppose N-pole of magnet is moved towards the coil, its upper face acquires north polarity. Therefore, work has to be done against the force of repulsion in bringing magnet closer to coil.

This mechanical work done in moving the magnet w.r.t the coil that changes into electric energy producing induced current.

Hence Lenz's law obeys the principle of conservation of energy.

Quantitative treatment: - If a conducting rod of length ℓ is moved in a magnetic field B and the current induced is I , then the magnetic force opposing the motion of the rod.



$$F_m = I\ell B = \left(\frac{B\ell v}{R}\right)\ell B = \frac{B^2\ell^2 v}{R}$$

Rate of doing work in maintaining the motion of the rod by pulling force F .

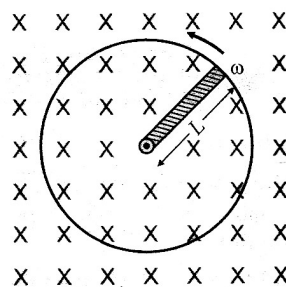
$$\frac{dw}{dt} = P_{\text{mch}} = Fv = \frac{B^2\ell^2 v^2}{R} = \left[\frac{B\ell v}{R}\right]^2 R = I^2 R = P_{\text{thermal}}$$

Hence mechanical energy applied to move the conductor is changed into electrical energy which dissipate into thermal energy. This is consistent with the law of conservation of energy.

Motional emf induced in a rotating bar: -

A conducting rod of length ℓ rotates with a constant angular speed ω about a point at one end.

A uniform magnetic field B is directed perpendicular to the plane of rotation



Let dr be a segment of rod at a distance r from o

The induced emf in this segment $d\varepsilon = Bdrv = B(r\omega) dr$

Total emf across the rod

$$\varepsilon = \int d\varepsilon = \int_0^l Br\omega dr = \frac{B\omega l^2}{2}$$

$$\varepsilon = \frac{B\omega l^2}{2}$$

From right hand rule we can see o is at higher potential than P .

$$\text{Thus } v_o - v_p = \frac{B\omega l^2}{2}; \omega = 2\pi\nu$$

Note:-

If above metallic rod rotated about its axis of rotation, then induced potential difference between any pair of identical located points of rod is always 0.

Cycle wheel:-

Flux cutting by each metal spoke is *Changing your Tomorrow* 

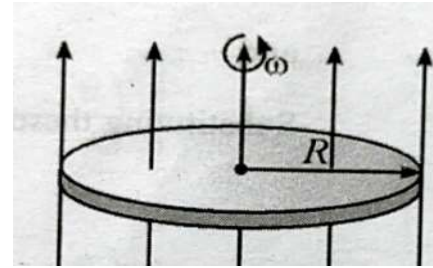
same each spoke becomes cell of emf = $\frac{B\omega l^2}{2}$

All such cell are parallel.

$$\text{Therefore } \varepsilon_{\text{net}} = \frac{B\omega l^2}{\omega}; \omega = 2\pi\nu$$

Faraday disc dynamo:-

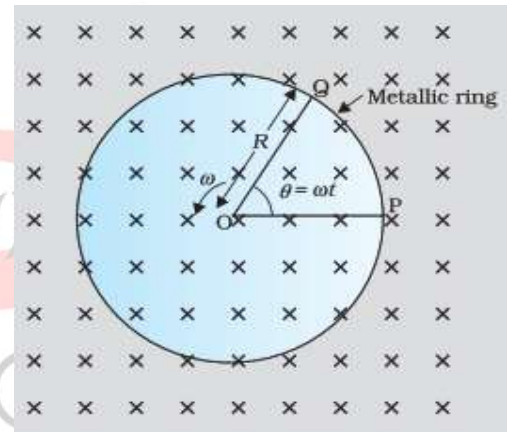
A metal disc can be assumed to be made up of number of radial conductors. All such conductors behave like a number of cells in parallel.



$$\text{Therefore } \varepsilon_{\text{net}} = \varepsilon = \frac{B\omega R^2}{2} = B(\pi R^2)\nu$$

Question:-

A metallic rod of 1m is rotated with a frequency of 50 rev/s with one end hinged at the centre and other end at the circumference of circular metallic ring of radius 1m, about an axis passing through the centre and perpendicular to the plane of the ring as shown in the figure, a constant and uniform magnetic field of 1T parallel to the axis is present everywhere. What is the emf between the centre and the metallic ring?

**Solution:-**

$$\varepsilon = \int_0^R Bv dr = \int_0^R B(\omega r) dr = \frac{B\omega R^2}{2}$$

$$\Rightarrow \varepsilon = \frac{1}{2} \times 1.0 \times 2\pi \times 50 \times [1]^2 = 157 \text{ v}$$

Question:-

A wheel with 10 metallic spokes each 0.5 m long is rotated with a speed of 120 rev/min in a plane normal to the horizontal component of earth's magnetic field at a place. If $H_E = 0.4 \text{ G}$ at the place, what is the induced emf between the axle and the rim of the wheel? Note that $1\text{G} = 10^{-4}\text{T}$

Solution:-

$$\text{Induced emf} = \frac{1}{2} B \omega R^2$$

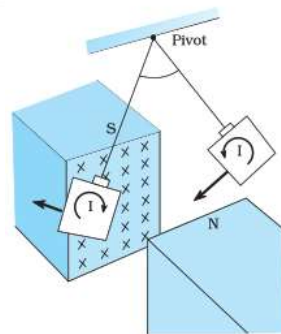
$$= \frac{1}{2} \times 4\pi \times 0.4 \times 10^{-4} \times (0.5)^2$$

$$= 6.28 \times 10^{-5} \text{ v}$$

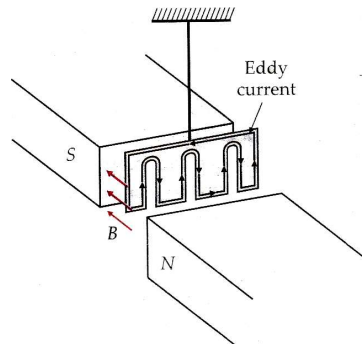
Since all the spokes are in parallel $\epsilon_{\text{total}} = \epsilon = 6.28 \times 10^{-5} \text{ v}$

Eddy Current:-

It is a type of circulating current formed in a bulk piece of conducting material when it is subjected to a changing magnetic flux.



These are circulating currents like eddies in water



Its magnitude is given by $I = \frac{\varepsilon}{R} = \frac{d\phi}{Rdt}$

Its direction is given by Lenz's law

Experimental concept given by Foucault, hence also normed as Foucault current

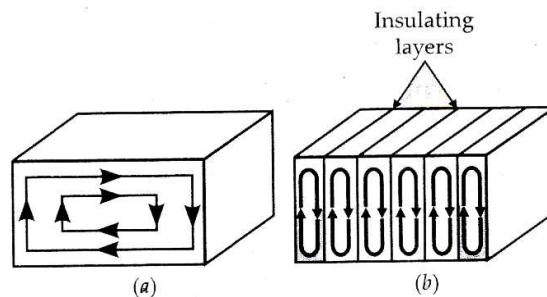
Disadvantages:-

- (a) The production of eddy currents in a metallic block leads to loss of electric energy in form of heat
- (b) The heat produced due to eddy currents breaks the insulation in electrical appliances.
- (c) it may cause unwanted damping effect

Minimization of eddy current: -

Changing your Tomorrow

By lamination By slotting process

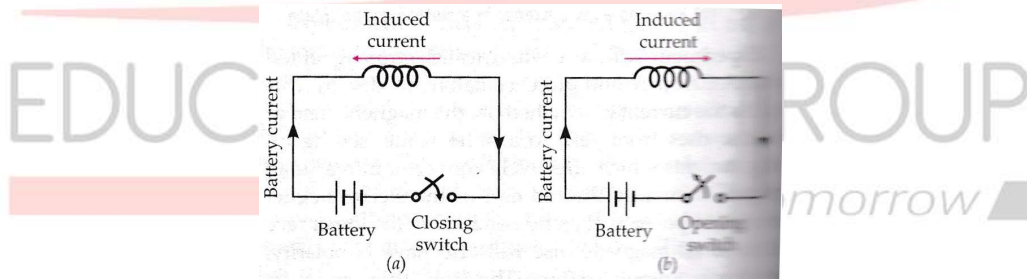


Application of eddy current: -

- (a) Magnetic braking in trains
- (b) Electromagnetic damping
- (c) Induction furnace
- (d) Electric power meters

Self Induction:-

The phenomenon due to which, an opposing induced emf (back emf) is produced in a coil, as a result of change in current in coil itself is called self-induction.

Example:- (when key is pressed)

The current starts growing the magnetic field (flux) also starts growing

A coil is connected to battery with tapping key. An induced emf is generated. The direction of induced emf is such that it opposed the growth of current.

When key is released: -

The current, hence the field (flux) start decaying which in turn produces induced emf whose direction is such that it opposes the decaying of current.

Both during growth and decay of current in a coil an opposing emf induced in coil itself, which demonstrate the self-induction phenomenon.

Physical Significance: -

As the mass plays the role in mechanics, the self-induction plays the same role in electric circuit.

Self-induction is the inertia of electricity

Self-inductance/ co-efficient of self-induction: -

Flux linkage through a coil of N-turns is proportional to the current through it.

$$N\phi \propto I$$

$$\Rightarrow N\phi = LI \dots\dots\dots (1)$$

Where the proportionality constant L is called co-efficient of self induction of the coil

Differentiating equation (1) w.r.t L we get $N \frac{d\phi}{dt} = L \frac{dI}{dt} \dots\dots\dots (2)$

From Faraday's law of e.m.i

$$N \frac{d\phi}{dt} = -\varepsilon \dots\dots\dots (3)$$

Comparing (2) and (3)

$$\varepsilon = -L \frac{dI}{dt} \quad \Rightarrow \quad L = \frac{-\varepsilon}{\frac{dI}{dt}}$$

Definition of self-inductance:-

If $\frac{dI}{dt} = 1$, then $L = E$ (numerically). Thus self-inductance of a coil is numerically equal to back emf in the coil when the rate of change of current is unity.

Units of self-inductance: - S.I unit is $\frac{\text{wb}}{\text{A}} = \text{henry (H)}$

$$\phi = LI \Rightarrow L = \frac{\phi}{I}$$

Smaller units are

mili henry (mH = 10^{-3} H)

micro henry ($\mu\text{H} = 10^{-6}$ H)

Definition of 1 henry of self inductance:-

If $\frac{dI}{dt} = 1 \text{ A/s}$, $E = 1 \text{ volt}$, then $L = 1 \text{ henry}$.

Self-inductance of a coil is said to be 1 henry

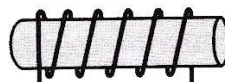
When a current changing at a rate of 1 A/s

causes a back emf of 1 volt in the coil itself

Dimensional formula (self-inductance):-

$$L = \epsilon \frac{d\phi}{dI} = \frac{w}{q} \frac{dt}{dI} = \frac{[ML^2T^{-2}]}{[AT]} \frac{[T]}{[A]} = [ML^2T^{-2}A^{-2}]$$

Self-inductance of long solenoid: -



A = Cross sectional area

n– number of turns per unit length

l= Length near the centre of the solenoid

Magnetic field due to the current in coil $B = \mu_0 nI$ (1)

The flux linkage with the solenoid

$$N\phi = (n\ell)(\mu_0 nI) A \dots\dots\dots (2)$$

Comparing the above equation with $N\phi = LI$

$$LI = (n\ell)(\mu_0 nI) A \quad \Rightarrow L = \mu_0 n^2 A \ell$$

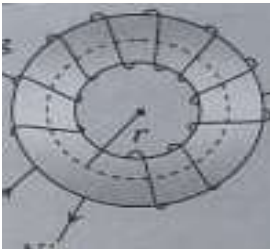
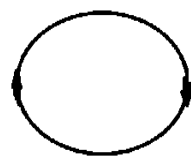
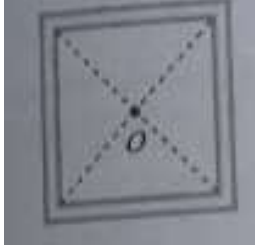
Note – 1 $\left[L_{\text{end}} = \frac{1}{2} L_{\text{centre}} \right]$

Note – 2 Step for finding L

- (a) Assume current in the coil
- (b) Determine the magnetic field due to this current in the coil
- (c) Obtain flux linkage $N\phi$
- (d) Compare with $N\phi = LI$ to get L

Question:- Find the self inductance of toroid, circular coil and a square coil

Solution

 $B = \frac{\mu_0 NI}{2\pi r} \quad N\phi = N \left(\frac{\mu_0 NI}{2\pi r} \right) A$ $L = \frac{\mu_0 N^2 A}{2\pi r}$	 $B = \frac{\mu_0 NI}{2r}$ $N\phi = N \left(\frac{\mu_0 NI}{2r} \right) \pi r^2$ $L = \frac{\mu_0 \pi N^2 r}{2}$	 $B = \frac{\mu_0}{4\pi} \frac{8\sqrt{2}I}{a} N$ $N\phi = N B a^2$ $\Rightarrow L = \frac{2\sqrt{2}\mu_0 N^2 a}{\pi}$
---	--	--

Magnetic potential energy of inductor: -

The self inductance plays the role of inertia. So, work needs to be done against the back emf in establishing the current.

This work done is stored as magnetic potential energy

For the current I at an instant in a circuit, the rate of work done

$$P = \frac{dw}{dt} = |\varepsilon|I$$

The energy dw supplied in time dt $dw = pdt = |\varepsilon|I dt = LI dI$

The total energy supplied $U = L \int_0^I I dI = \frac{1}{2} LI^2$

Question: -

(a) Obtain an expression for the magnetic energy stored in a solenoid in terms of magnetic field B , area A and length l of the solenoid.

(b) How does the magnetic energy compare with the electrostatic energy stored in a capacitor?

Solution: - (a) $U_B = \frac{1}{2} LI^2 = \frac{1}{2} L \left[\frac{B}{\mu_0 n} \right]^2$

$$\left[\begin{array}{l} \therefore B = \mu_0 n I \\ \Rightarrow I = \frac{B}{\mu_0 n} \end{array} \right]$$

$$\Rightarrow U_B = \frac{1}{2} (\mu_0 n^2 A \ell) \left[\frac{B}{\mu_0 n} \right]^2$$

$$[\therefore L = \mu_0 n^2 A \ell]$$

$$\Rightarrow U_B = \frac{1}{2\mu_0} B^2 A \ell$$

(b) Magnetic energy per unit volume (i. e magnetic energy density)

$$U_B = \frac{U_B}{v} = \frac{1}{2} \frac{\mu_0 B^2 A \ell}{A \ell} = \frac{B^2}{2\mu_0}$$

Electrostatic energy stored per unit volume in parallel plate capacitor is given by

$$U_E = \frac{1}{2} \epsilon_0 E^2$$

In both case the energy is proportional to the square of the field strength

Question:- A 12H inductor carries a steady current of 2A. How can a 60v self induced emf be made to appear in the inductor.

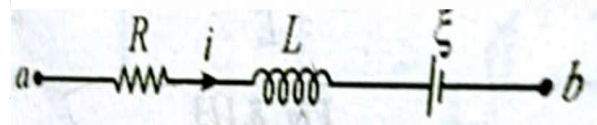
Solution:- $|\epsilon| = L \frac{dI}{dt} \Rightarrow \frac{dI}{dt} = \frac{|\epsilon|}{L} = \frac{60}{12} = 5 \text{ A/s}$

The current in the inductor should change at the rate of 5 A/s

Question:-

In the circuit as given, $R = 10 \Omega$, $L = 5 \text{ H}$, $\xi = 20 \text{ V}$, $I = 2 \text{ A}$ this current is decreasing at a rate of 1 A/s. Find v_{ab} at this instant

Solution:- Applying Kirchoff's law



$$V_a - 10 \times 2 + V_L - 20 = V_b$$

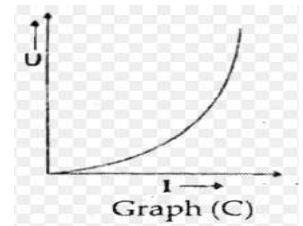
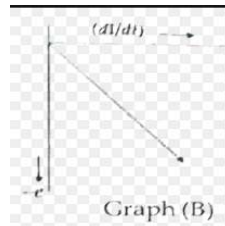
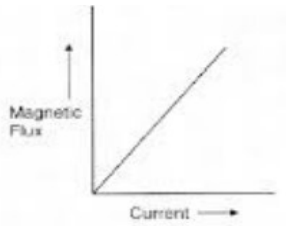
$$\text{But } V_L = -L \frac{dI}{dt} = -5(-1) = +5 \text{ V}$$

$$\text{Thus } V_a - 20 + 5 - 20 = V_b \quad \Rightarrow V_a - V_b = 35 \text{ volts}$$

Question:- The current flowing through an inductor of self inductance L is continuously increasing. Plot a graph showing the variation of

(a) Magnetic flux \sim current (b) Induced emf \sim di/dt (c) Magnetic P.E \sim current

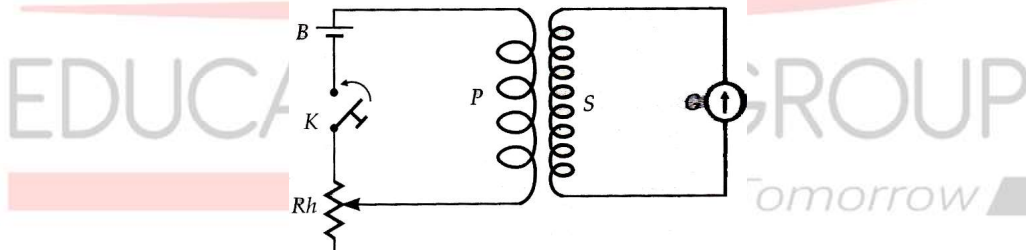
Solution:-



Mutual Induction:-

It is the phenomenon due to which an opposing emf (back emf) is produced in a coil, as a result of change in current (or change in magnetic flux) in neighboring coil.

Example:-



When key is pressed:-

Current in P begins to increase

Magnetic flux in P also increase

Magnetic flux through s (which is coupled to p) also increase

This setup an induced emf in S, whose direction is such it opposes the growth of current in P

When key is released:- In the similar method induced emf in S try to oppose the decay of current in P

Coefficient of Mutual Induction: -

Let ϕ be the magnetic flux linked with secondary due to current I in primary

Thus $\phi \propto I$

$$\Rightarrow \phi \propto MI \dots\dots\dots (1)$$

Proportionality constant M is called mutual inductance

From (1) $\frac{d\phi}{dt} = M \frac{dI}{dt}$

$$E = -\frac{d\phi}{dt} = -M \frac{dI}{dt} \dots\dots\dots (2)$$

$$E = -M \frac{dI}{dt}$$

From (2) if $\frac{dI}{dt} = 1 \text{ Amp/s}$, then $E = -M$

Hence, mutual inductance of a coil is numerically equal to induced emf produced in one coil when the rate of change of current is unity in other coil.

Unit of Mutual Inductance:-

Henry – (SI unit)

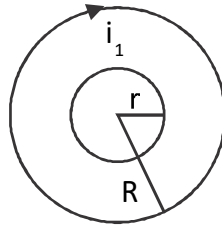
Ab – Henry (C.G.S unit)

mill. Henry micro henry

Mutual inductance for:-

(1) Two concentric co-planer circular coils

Magnetic field at the centre due to current in outer coil



$$B_1 = \frac{\mu_0}{4\pi} \frac{2\pi N_1 i_1}{R} \dots\dots\dots (1)$$

 $N_2 \phi_2 \rightarrow$ Total flux linkage with secondary coil

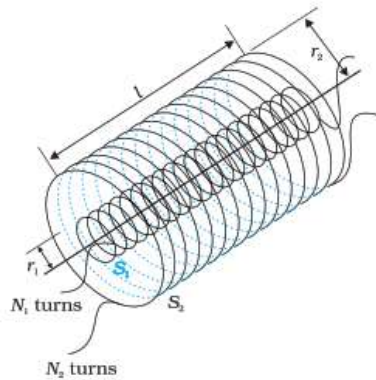
$$\text{So } N_2 \phi_2 = M i_1$$

$$\Rightarrow M = \frac{N_2 (\phi_2)}{i_1} = \frac{N_2 (B_1 A_2)}{i_1} = N_2 \frac{\frac{\mu_0}{4\pi} \frac{2\pi N_1 i_1}{R} (\pi r^2)}{i_1}$$

$$\Rightarrow M = \frac{\pi \mu_0 N_1 N_2 r^2}{2R}$$

$$\Rightarrow M \propto \frac{r^2}{R}$$

(ii) Two solenoids



Magnetic field inside the primary solenoid

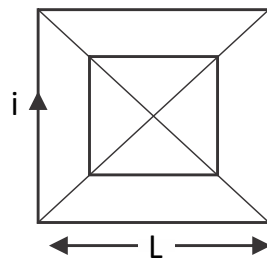
$$B_1 = \mu_0 n_1 i_1 \dots\dots\dots (1)$$

$$N_2 \phi_2 = M i_1$$

$$\Rightarrow M = \frac{N_2 \phi_2}{i_1} = \frac{N_2 (B_1 A)}{i_1}$$

$$M = \frac{\mu_0 N_1 N_2 A}{\ell} \quad (A = \text{Area of each solenoid})$$

Question:- Calculate the mutual inductance of two concentric co-planer square coil if sides L and ℓ respectively as shown in figure.

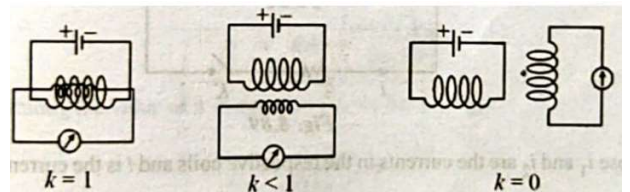


Solution:-
$$M = \frac{\mu_0 2\sqrt{2} N_1 N_2 \ell^2}{\pi L}$$

Dependence of mutual inductance:-

- (a) Number of turns ($N_1 N_2$) of both coils
- (b) coefficient of self inductance ($L_1 L_2$) of both coils
- (c) Common area of cross section of coils
- (d) Distance between two coils ($A_s d \uparrow = M \downarrow$)
- (e) Orientation between primary and secondary coils

(f) Coupling factor (k) = $\frac{\text{flux in secondary}}{\text{flux in primary}}$



Relation between M, L₁, and L₂:-

For two magnetically coupled coil $M = K\sqrt{L_1L_2}$

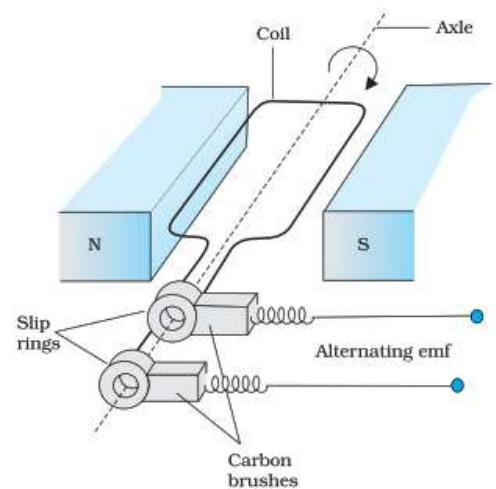
AC Generator/ Dynamo: - It is an electric device which converts mechanical to electrical energy (A.C)

Principle:-

It is based on the principle of electromagnetic induction. (i.e when coil rotates in a uniform magnetic field, an emf is induced in it)

Construction:- The essential parts are

- (a) Armature - Insulated copper wire, wound on a laminated core of soft iron
- (b) Field magnet – Horse shoe or strong magnet that provides an uniform magnetic field
- (c) Slip ring - Metal shoe or strong magnet that provides an uniform magnetic field



(d) Brushes – Two flexible metal rods which kept pressing against the slip ring. They are used to pass the current from armature to external resistance R.

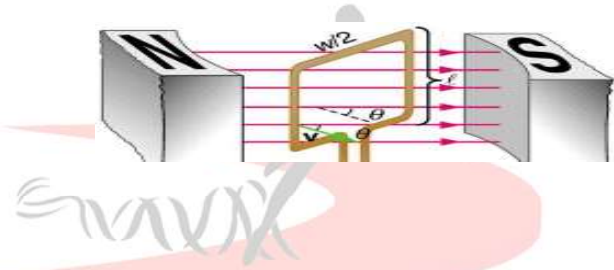
Theory and working:- As the armature coils rotated, the flux linked with it changes

An emf induced which is given by $\epsilon = -\frac{d\phi}{dt} = -\frac{d}{dt}(NBA \cos \theta)$

$$= -\frac{d}{dt}(NBA \cos \omega t)$$

$$\Rightarrow E = \omega NBA \sin \omega t \dots\dots\dots (1)$$

Where $\omega = \frac{\theta}{t} \rightarrow$ Angular velocity of coil



From equation (1)

When $\sin \omega t = 1$

$$E = NBA\omega(\max) \Rightarrow E_0 = NBA\omega(\max)$$

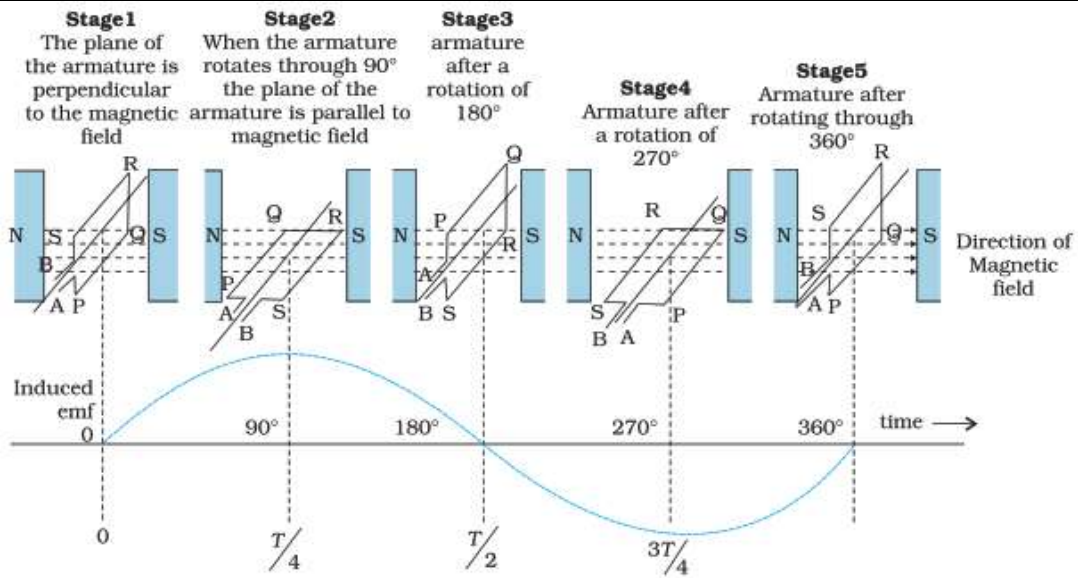
Thus from equation (1)

$$E = E_0 \sin \omega t$$

$$\Rightarrow E = E_0 \sin 2\pi \nu t \dots\dots\dots (2)$$

Where $\omega = 2\pi \nu t$, $\nu =$ frequency of rotation of coil Equation (2) indicate the emf is alternating in nature.

Position-1	Position-2	Position-3	Position-4	Position-5
Coil \perp r to \vec{B}	Coil \parallel to \vec{B}	Again \perp_r to B	Again $\parallel \vec{B}$	\perp r to B
$\theta = \omega t = 0^\circ$	$\theta = \frac{\pi}{2}$	$\theta = \pi$	$\theta = \frac{3\pi}{2}$	$\theta = 2\pi$
$\varepsilon = 0$	$\varepsilon = \varepsilon_{\max}$	$\varepsilon = 0$	$\varepsilon = -\varepsilon_0$	$\varepsilon = 0$



EDUCATIONAL GROUP

Changing your Tomorrow