
Question 1

Choose the correct answer out of the four available choices given below each question. [15]

1. Which of the following tissues consists of dead cells?
 - (a) Sclerenchyma
 - (b) Parenchyma
 - (c) Collenchyma
 - (d) Aerenchyma

2. Tendons connect _____ to _____.
 - (a) Muscles to bones
 - (b) Muscles to skin
 - (c) Bones to skin
 - (d) Muscles to muscles

3. Fluid connective tissue in humans is
 - (a) Blood and cartilage
 - (b) Lymph and plasma
 - (c) Blood and lymph
 - (d) Bone and cartilage

4. Based on whether they produce fruits or not, plants are classified into
 - (a) Angiosperms and gymnosperms
 - (b) Bryophytes and pteridophytes
 - (c) Angiosperms and bryophytes
 - (d) Gynosperms and pteridophytes

5. Oxygen and carbon dioxide are exchanged at the _____.
 - (a) Nasal cavities
 - (b) Trachea
 - (c) Pharynx
 - (d) Alveoli

6. Which of the following has a scaly skin on its body and breathes with the help of gills?
 - (a) Rohu
 - (b) Tortoise
 - (c) Sparrow
 - (d) Rat

7. Carbohydrates are stored by the plants in the form of
 - (a) Vitamins
 - (b) Fats
 - (c) Proteins
 - (d) Starch

8. Which of the following refers to the energy currency of the cell?
 - (a) ATP
 - (b) ADP
 - (c) NADH
 - (d) NADP

9. Which of following tissues stores fats?
 - (a) Areolar tissue
 - (b) Adipose tissue
 - (c) Epithelial tissue
 - (d) Ligaments

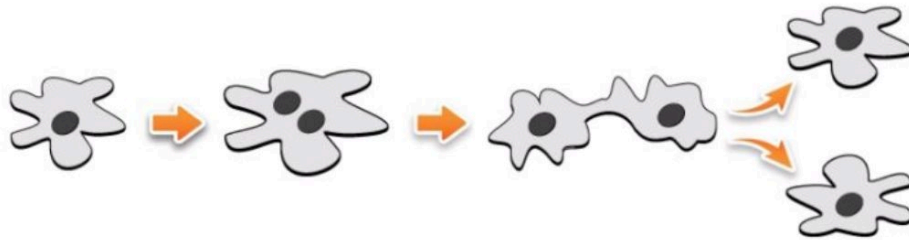
10. Which of the following chemicals is added during respiration experiments to prevent bacterial growth on dead seeds?
 - (a) Citric acid
 - (b) Carbolic acid
 - (c) Pyrogalllic acid
 - (d) Potassium permanganate

11. Which of the following stores urine?
 - (a) Ureter
 - (b) Urethra
 - (c) Urinary bladder
 - (d) Kidney

12. Excretion in Amoeba takes place with the help of _____.

- (a) Food vacuole
- (b) Contractile vacuole
- (c) Pseudopodia
- (d) Cilia

13. Identify this method of reproduction.



- (a) Multiple fission
- (b) Fragmentation
- (c) Binary fission
- (d) Segmentation

14. Nephrons release urine into the _____, from where the ureters carry it to the urinary bladder.

- (a) Glomerulus
- (b) Kidneys
- (c) Renal pelvis
- (d) None of these

15. Which of the following occurs due to allergic reaction 'hives'?

- (a) Lining of the nasal cavity becomes inflamed
- (b) Walls of the bronchioles contract
- (c) Blood pressure decreased
- (d) Swollen, red patches appear on the skin

Question 2

A. Name the following.

[5]

1. Tissue involved in the transport of food in plants.
2. The middle portion of an insect's body.
3. Organisms in which the body consists of thread-like structures.
4. Tiny openings found on the lower side of the leaf for the exchange of gases.
5. Amphibians of plant kingdom.

- B. Fill in the blanks. [5]
1. Starfish moves with the help of _____.
 2. Each nephron consists of a cup-shaped structure called _____.
 3. _____ are tiny structures capable of producing new plants.
 4. Annelids have special organs for excretion called _____.
 5. Stomata are surrounded by a pair of bean-shaped cells called _____ cells.

Question 3

- A. Match the following. [5]

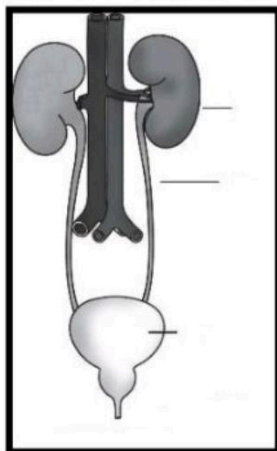
Column A	Column B
1. Sponge	A. Reptilia
2. Snail	B. Amphibia
3. Butterfly	C. Porifera
4. Toad	D. Mollusc
5. Lizard	E. Arthropoda

- B. Answer the following.

1. Observe the picture given below and identify the cell structure. In which type of cell is this structure present? What is its role? [2]



2. Observe the picture given below and label the parts. [3]



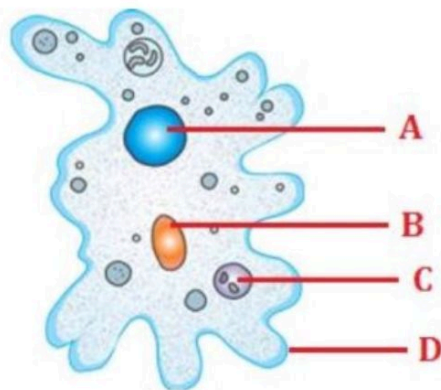
Question 4

A.

(a) What are allergens? Name any two allergens. [2]

(b) Which test is mostly preferred to test an allergy, skin prick test or blood test? Why? [3]

B. Identify the figure and label its parts. [5]



Question 5

A. Complete the table given below. [5]

	Aerobic respiration	Anerobic respiration
Oxygen requirement		
End products		
Energy released		

B. Find the odd one out. [5]

1. Tannin, Urea, Uric acid, Bile
2. Cerebrum, Medulla, Spinal nerves, Cerebellum
3. Bat, Blue whale, Flying squirrel, Water strider
4. Typhoid, Hay fever, Hives, Asthma
5. Xylem, Parenchyma, Meristem, Ligament

Question 6

- A. State the differences between respiration and photosynthesis. [5]
- B. Define the following terms. [5]
1. Egestion
 2. Tissue
 3. Symbiosis
 4. Monocotyledons
 5. Breathing

Question 7

- A. Write two characteristics and one example for each of the following: [5]
1. Arthropoda
 2. Annelida
 3. Mollusca
- B. Answer the following.
1. State the commercial importance of yeast. [2]
 2. Write three points of differences between xylem and phloem. [3]