

SESSION : 2

CLASS : 5

SUBJECT : SOCIAL SCIENCE

CHAPTER NUMBER: 21

CHAPTER NAME : OUR GOVERNMENT

SUBTOPIC : ACTIVITY - A DIAGRAM TO SHOW THE STRUCTURE OF YOUR STATE GOVERNMENT.

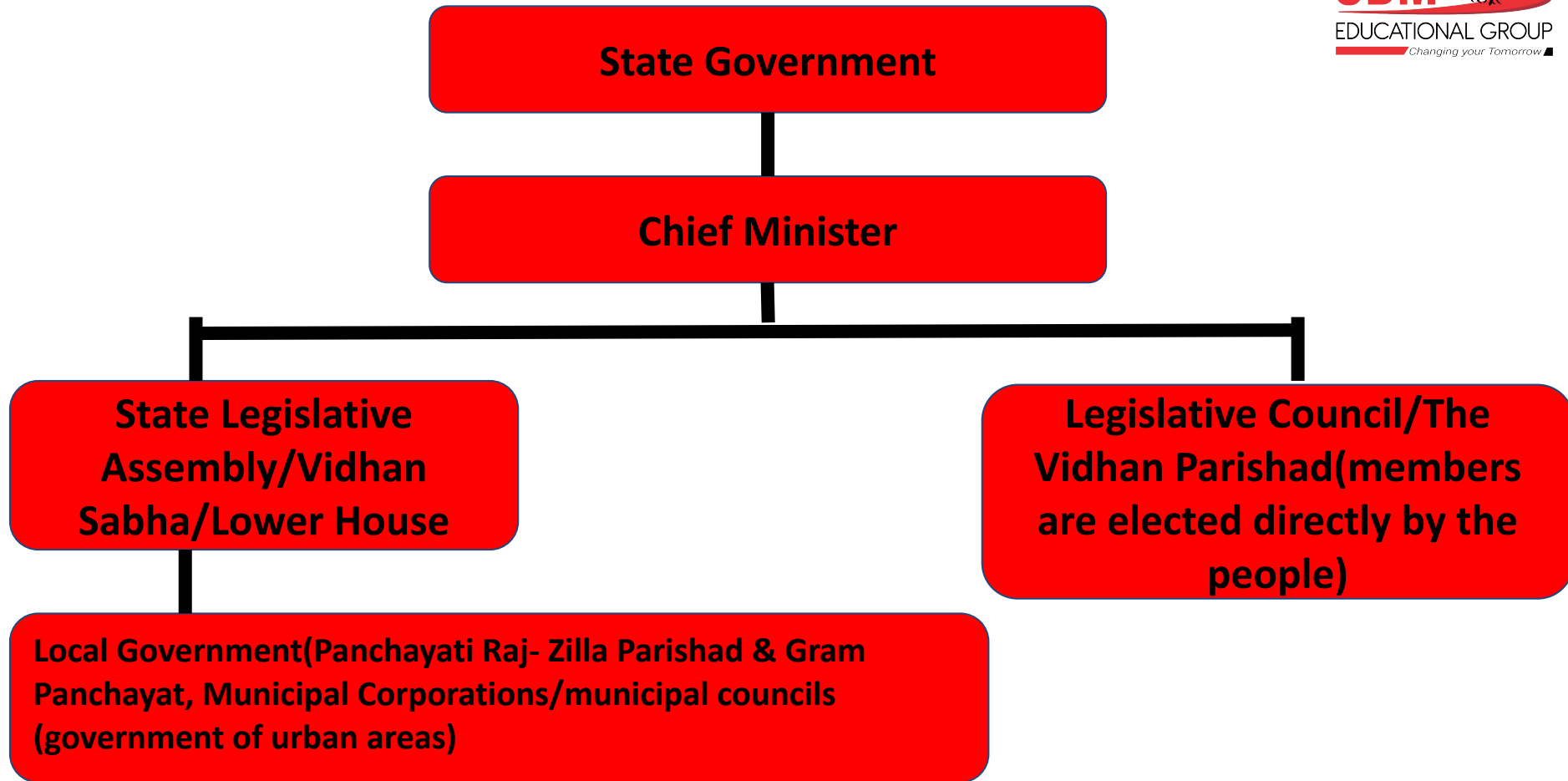
CHANGING YOUR TOMORROW

LEARNING OBJECTIVES

To enable the learner to know about:

- **How to increase their creativity.**
- **A clear idea about how igloos are helpful to the people in polar region.**





Vidhan Sabha (Legislative Assembly/Lower House)

- 60-500 Members, called MLA (Member of Legislative Assembly)
- Members are directly elected by Residents of the state in State elections.
- Whichever political party has majority votes, forms the state government and chooses the **Chief Minister**
- Election every 5 years.
- Head is called 'Speaker' and is usually of the stronger political party

HOMEWORK

Learn all the States and Union Territories with their capitals.

LEARNING OUTCOME

The learner will be able to :

- Have a brief view on the chapter
- Acquire the knowledge how igloo is helpful to protect the Inuits from extreme cold.

THANKING YOU
ODM EDUCATIONAL GROUP