

**CLASS: I**

**SUBJECT : ଓଡ଼ିଆ**

**CHAPTER NUMBER: 1**

**CHAPTER NAME : ସ୍ଵରବର୍ଣ୍ଣ**

**SUBTOPIC: ଅକ୍ଷର ପରିଚୟ (ଅ ଆ ଇ ଈ)**

**CHANGING YOUR TOMORROW**

Website: [www.odmegroup.org](http://www.odmegroup.org)

Email: [info@odmps.org](mailto:info@odmps.org)

Toll Free: **1800 120 2316**

Sishu Vihar, Infocity Road, Patia, Bhubaneswar- 751024

ବର୍ଷାମାଳା

ସ୍ୱରବର୍ଷା

ବ୍ୟଞ୍ଜନବର୍ଷା

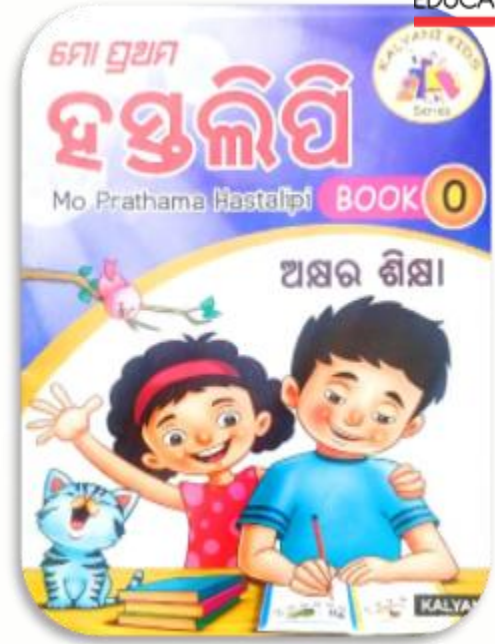
# ସ୍ଵରବର୍ଣ୍ଣ

ଅ ଆ ଇ ଈ

ଉ ଊ ଋ ଌ

ଏ ଐ ଓ ଐ

# ସ୍ଵର ବର୍ଣ୍ଣ



# ଅକ୍ଷର ଗୁଡ଼ିକର ଲିଖନ ପ୍ରଣାଳୀ ଶିଖାଏ

ଅ

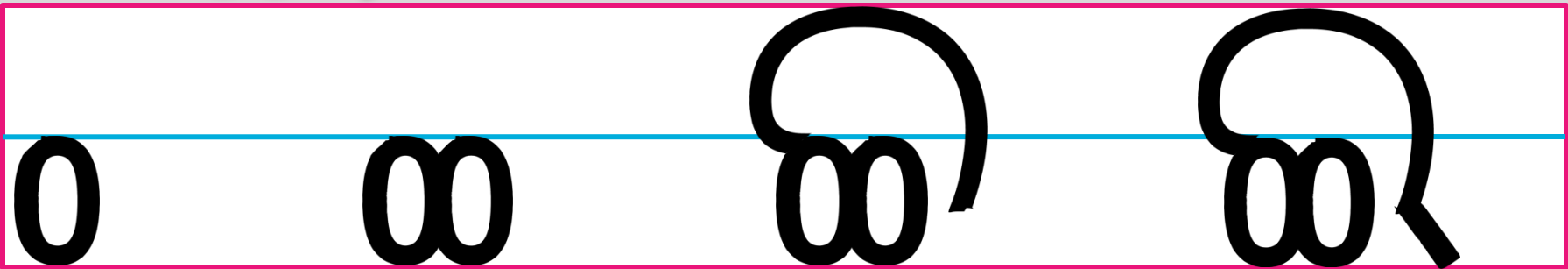


ଶ ଣ ଣ ଅ

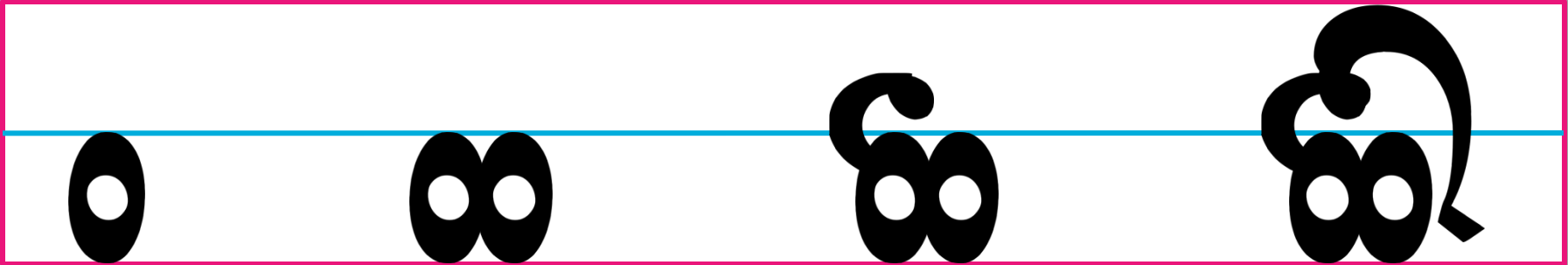
ଆ



ଆ ଆ ଆ ଆ ଆ

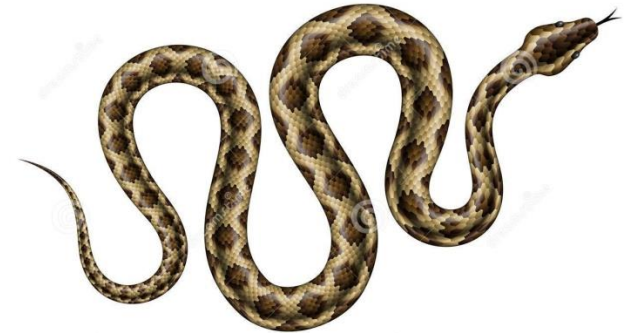




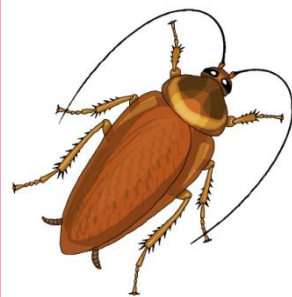


ଅଜଗର

ଅସରପା



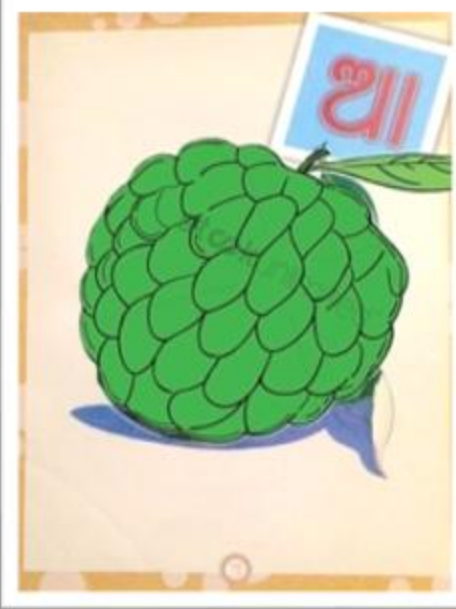
ଅରଣ



ଆଡ଼



ଆମ୍ବ



ଆଇ

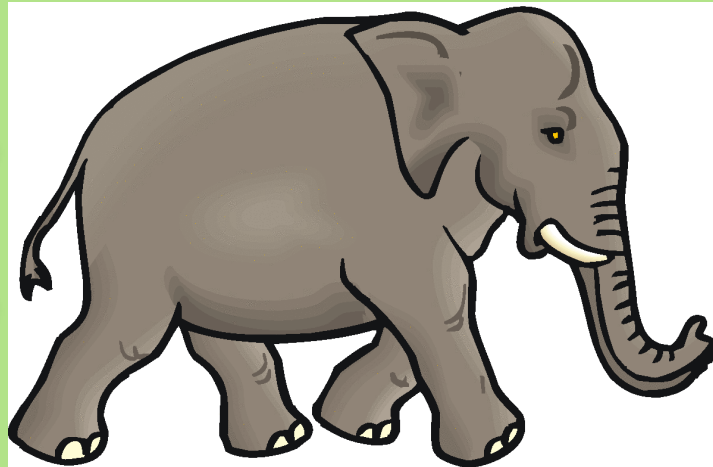




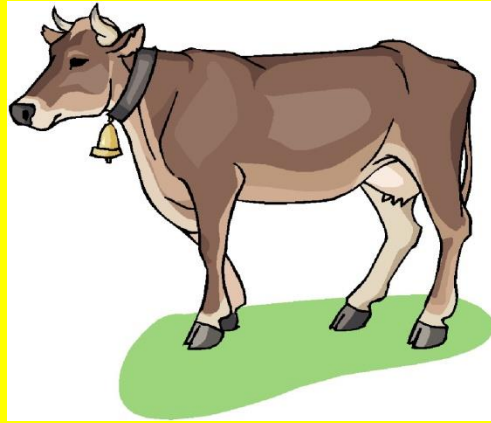
କଣ

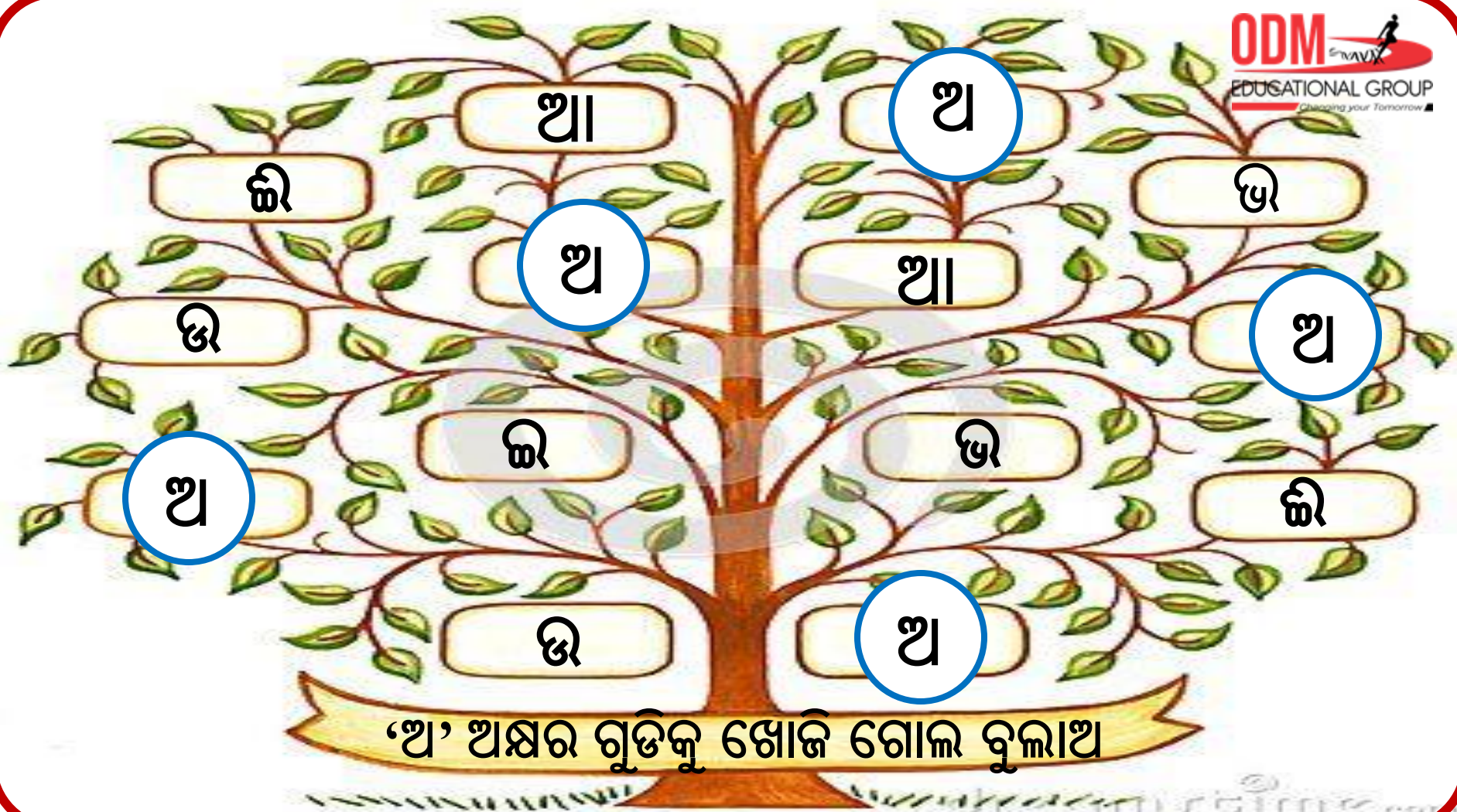


କଣ



କଣ





‘ଥ’ ଅକ୍ଷର ଗୁଡ଼ିକୁ ଖୋଜି ଗୋଲ ବୁଲାଇ

ଅଭିଯାନ

CW

Dt:

# ସ୍ଵରବର୍ଣ୍ଣ

Date \_\_\_\_\_  
Page \_\_\_\_\_

ଅ

ଆ

ଇ

ଈ

ଅ

ଆ

ଇ

ଈ



# ଅନ୍ୟବାଦ