

CONTROL AND COORDINATION.

SUBJECT: BIOLOGY.

CHAPTER: 7

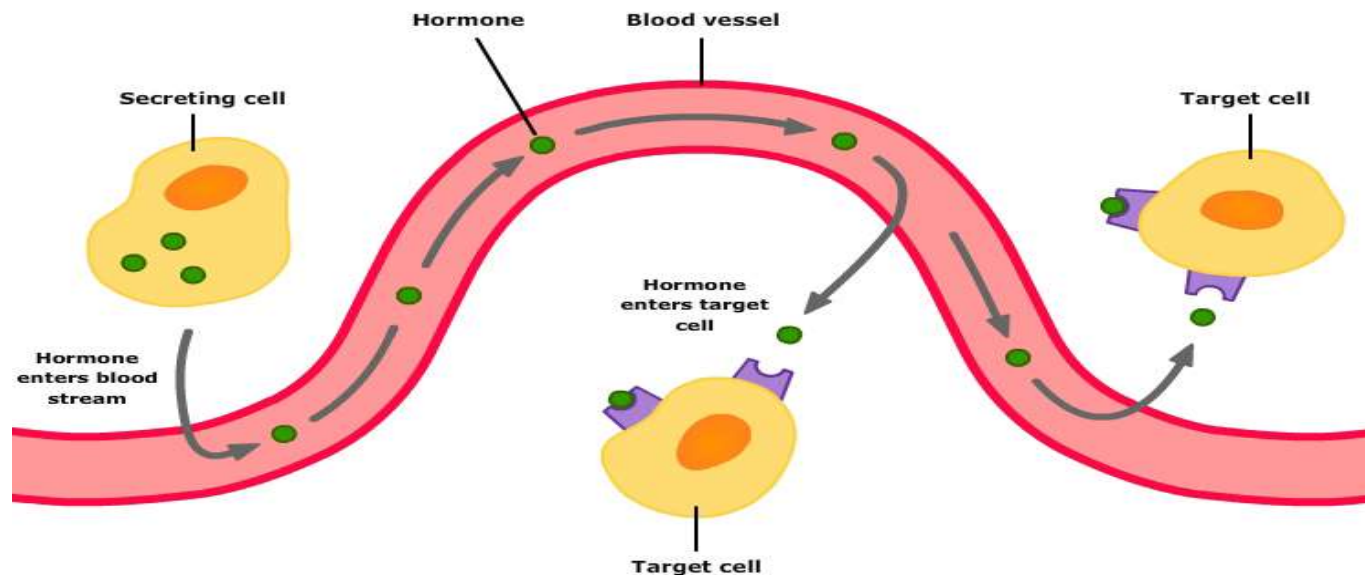
HORMONES IN ANIMALS.

PERIOD-4

CHANGING YOUR TOMORROW

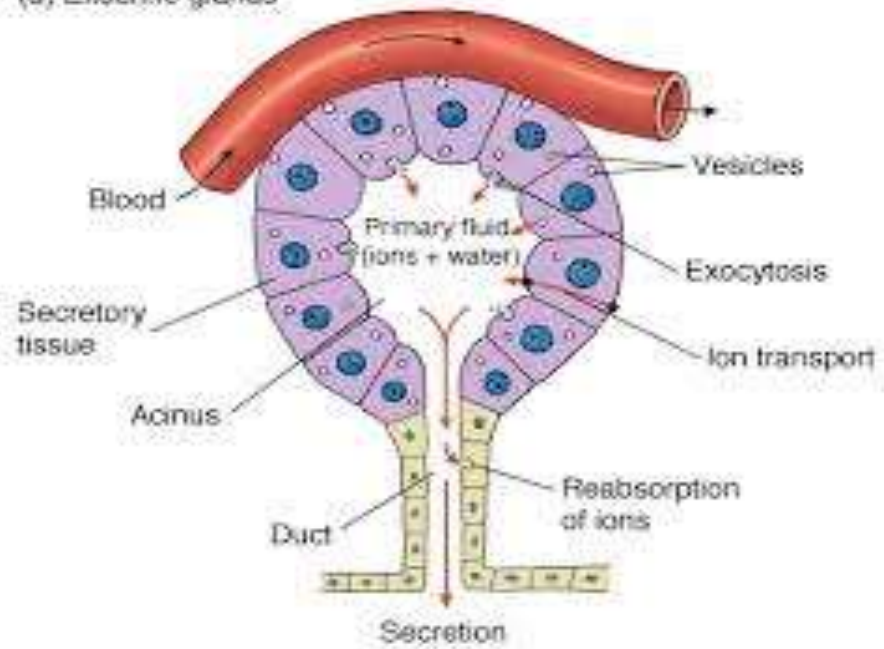
HORMONES

- Hormone is a chemical substance secreted by an endocrine gland, which is directly poured into the blood stream and acts on a target organ or cell.



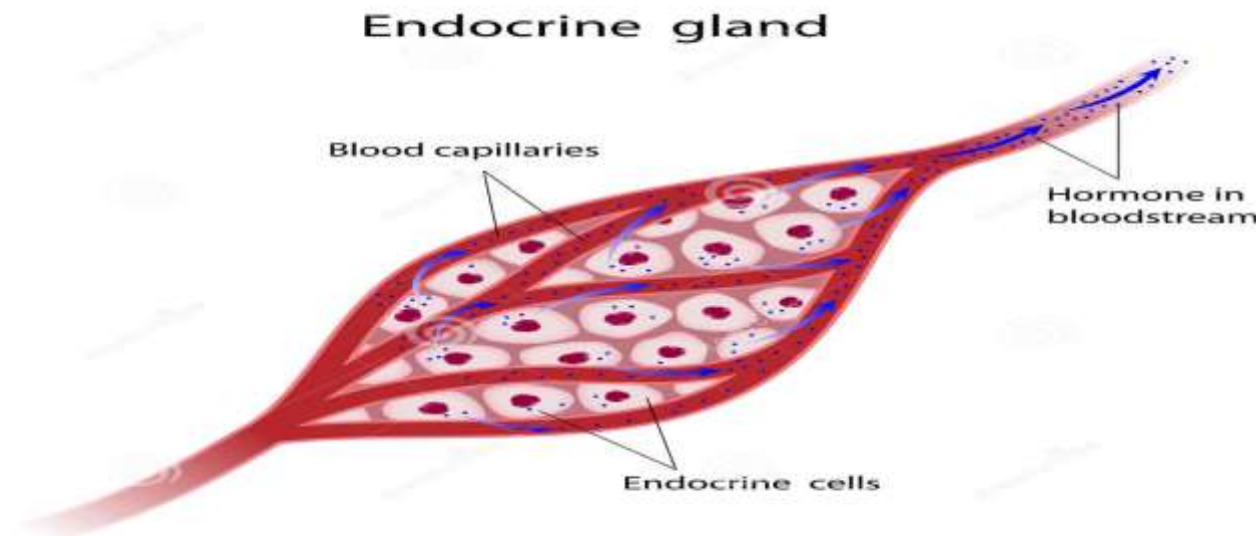
EXOCRINE GLAND

(a) Exocrine glands



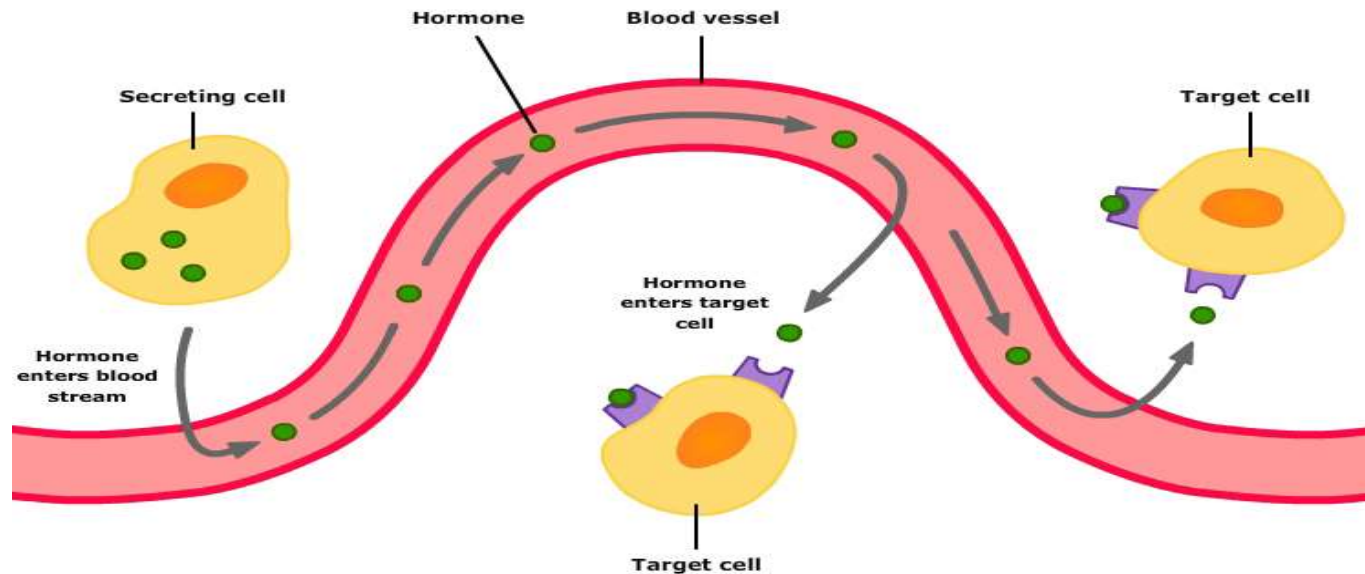
ENDOCRINE GLAND

- Endocrine glands are ductless glands of the endocrine system that secrete their products, hormones, directly into the blood.
- The major glands of the endocrine system include the pineal gland, pituitary gland, pancreas, ovaries, testes, thyroid gland, parathyroid gland, hypothalamus and adrenal glands.



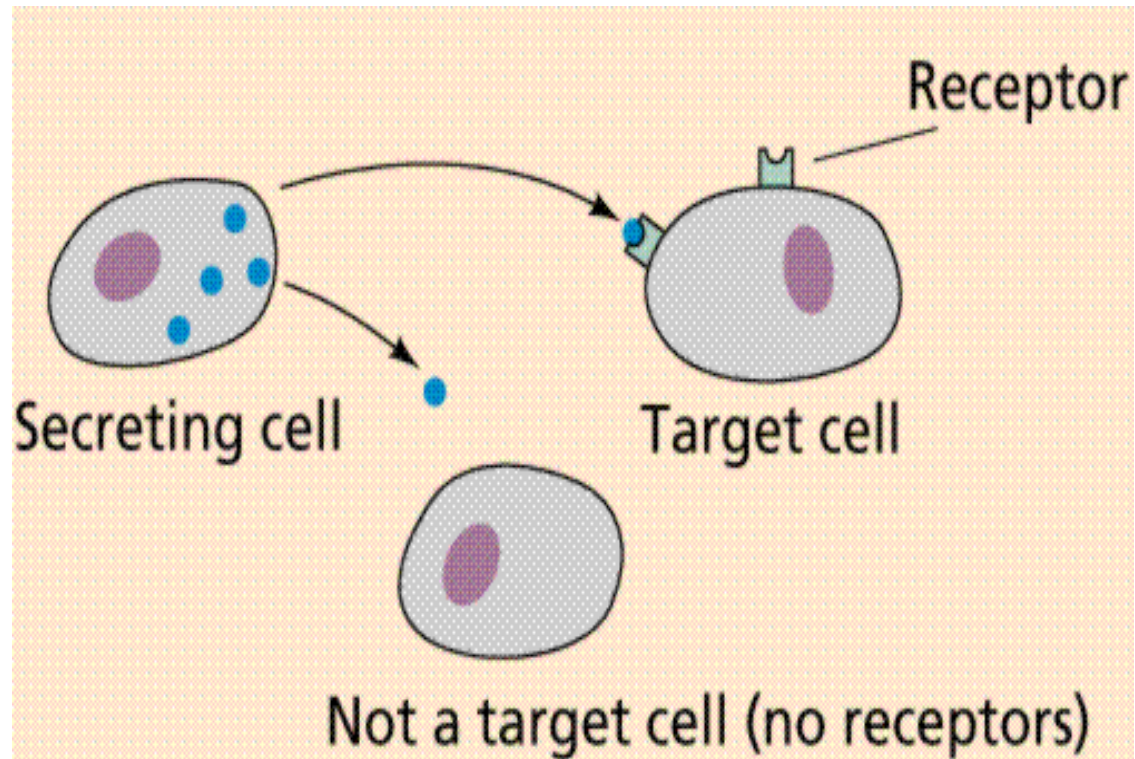
HORMONES

- Hormone is a chemical substance secreted by an endocrine gland, which is directly poured into the blood stream and acts on a target organ or cell.



TARGET AND NON TARGET CELL

- Target cell-any cell that has a specific receptor for an antigen or antibody or hormone or drug, or is the focus of contact by a virus or phagocyte or nerve fiber etc.



- <https://www.youtube.com/watch?v=A3An8mGcC-I>



THANKING YOU
ODM EDUCATIONAL GROUP.