



SUBJECT: BIOLOGY

CHAPTER: 5

CHAPTER NAME: ENDOCRINE SYSTEM AND ADOLESCENCE.

PERIOD-1

---

**CHANGING YOUR TOMORROW**

---

Website: [www.odmegroup.org](http://www.odmegroup.org)

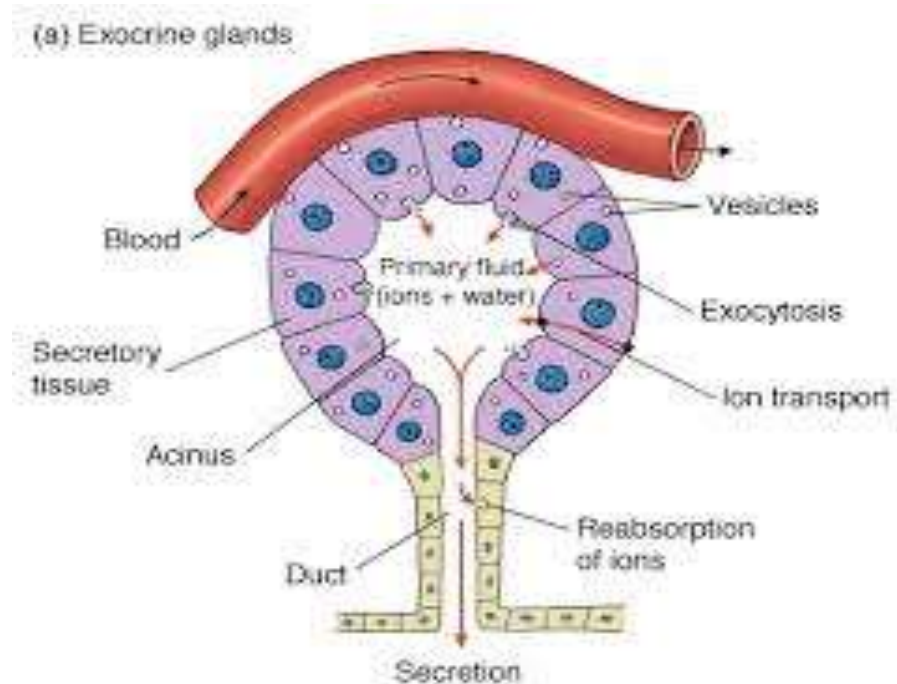
Email: [info@odmps.org](mailto:info@odmps.org)

Toll Free: **1800 120 2316**

Sishu Vihar, Infocity Road, Patia, Bhubaneswar- 751024

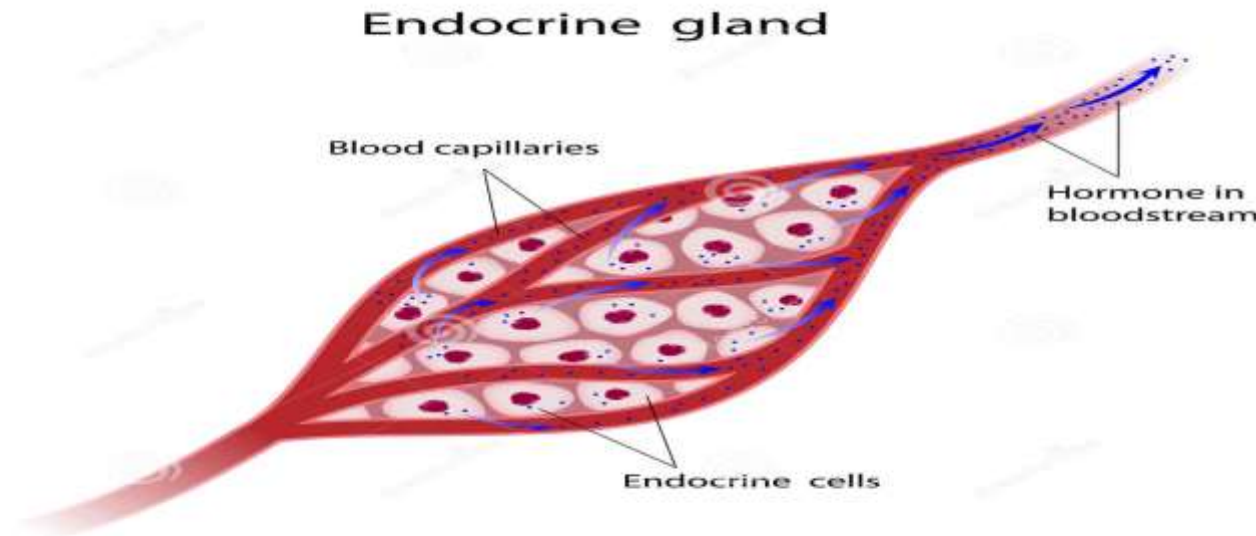
## EXOCRINE GLAND

- A gland that makes substances such as sweat, tears, saliva, milk, and digestive juices, and releases them through a duct or opening to a body surface. Examples of exocrine glands include sweat glands, lacrimal glands, salivary glands, mammary glands, and digestive glands in the stomach, and intestines.



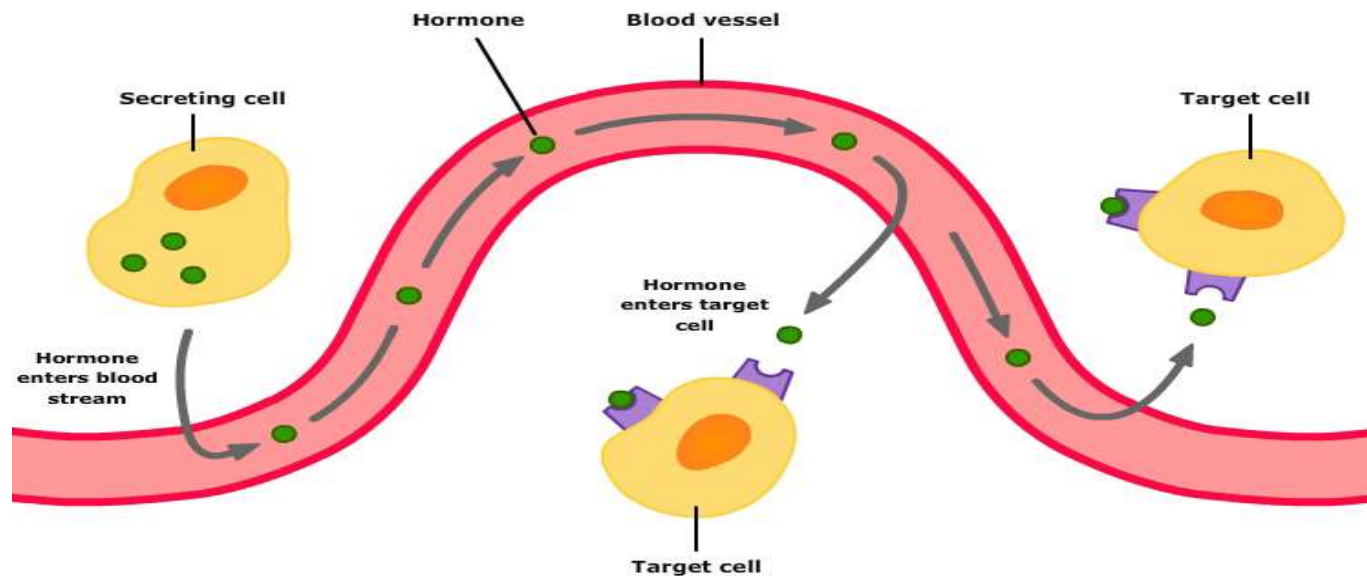
## ENDOCRINE GLAND

- Endocrine glands are ductless glands of the endocrine system that secrete their products, hormones, directly into the blood.
- The major glands of the endocrine system include the pineal gland, pituitary gland, pancreas, ovaries, testes, thyroid gland, parathyroid gland, hypothalamus and adrenal glands.



## HORMONES

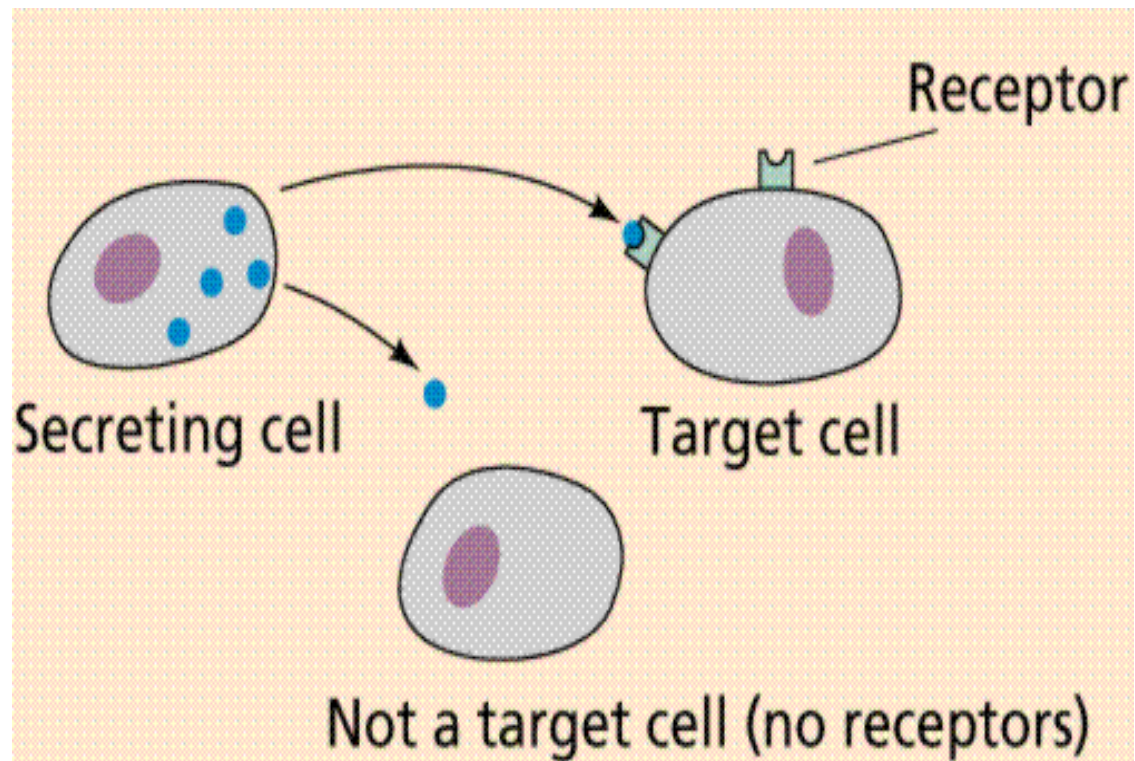
- Hormone is a chemical substance secreted by an endocrine gland, which is directly poured into the blood stream and acts on a target organ or cell.



© 2007-2011 The University of Waikato | [www.sciencelearn.org.nz](http://www.sciencelearn.org.nz)

## TARGET AND NON TARGET CELL

- Target cell-any cell that has a specific receptor for an antigen or antibody or hormone or drug, or is the focus of contact by a virus or phagocyte or nerve fiber etc.



- <https://www.youtube.com/watch?v=A3An8mGcC-I>

THANKING YOU  
ODM EDUCATIONAL GROUP.

