



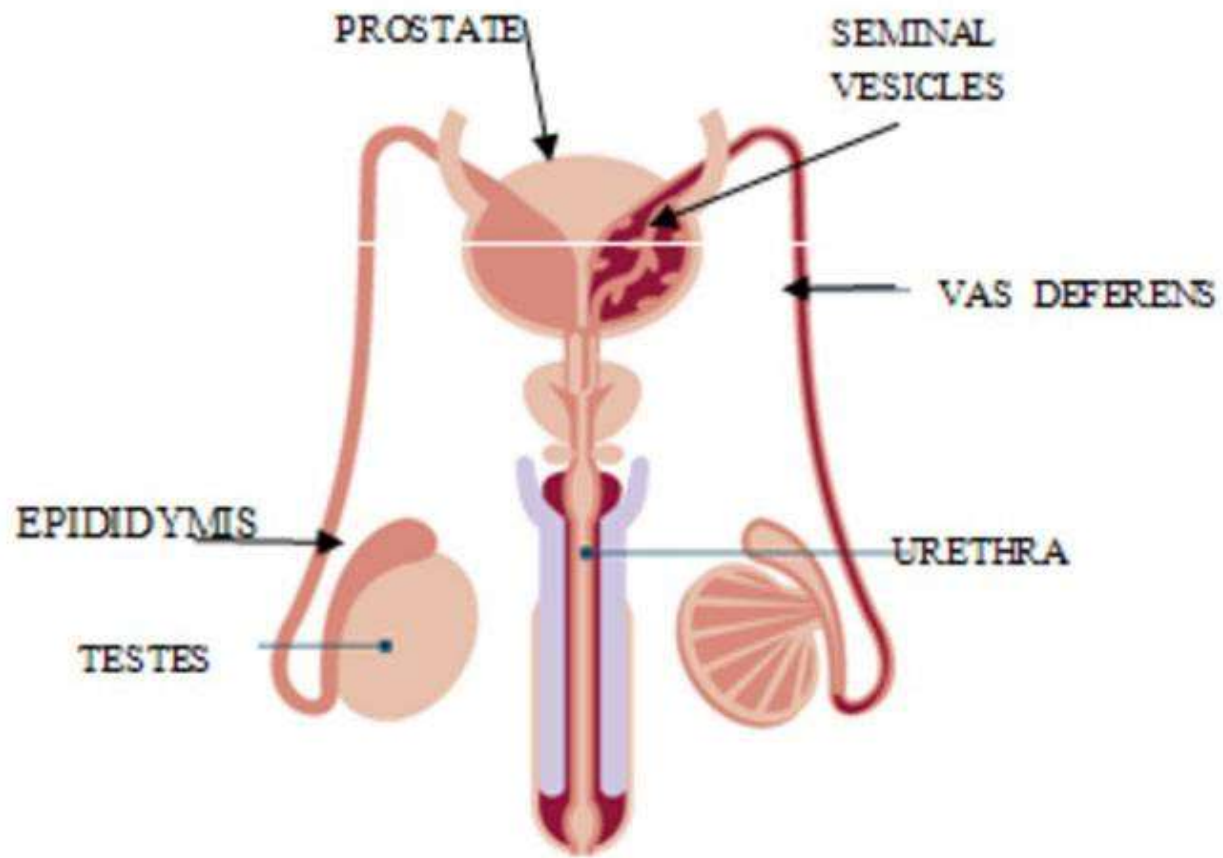
SUBJECT: BIOLOGY
CHAPTER: 3
CHAPTER NAME: REPRODUCTION IN HUMANS
PERIOD-3

CHANGING YOUR TOMORROW

Website: www.odmegroup.org
Email: info@odmps.org

Toll Free: **1800 120 2316**
Sishu Vihar, Infocity Road, Patia, Bhubaneswar- 751024

Male Reproductive System:



Male Reproductive System:

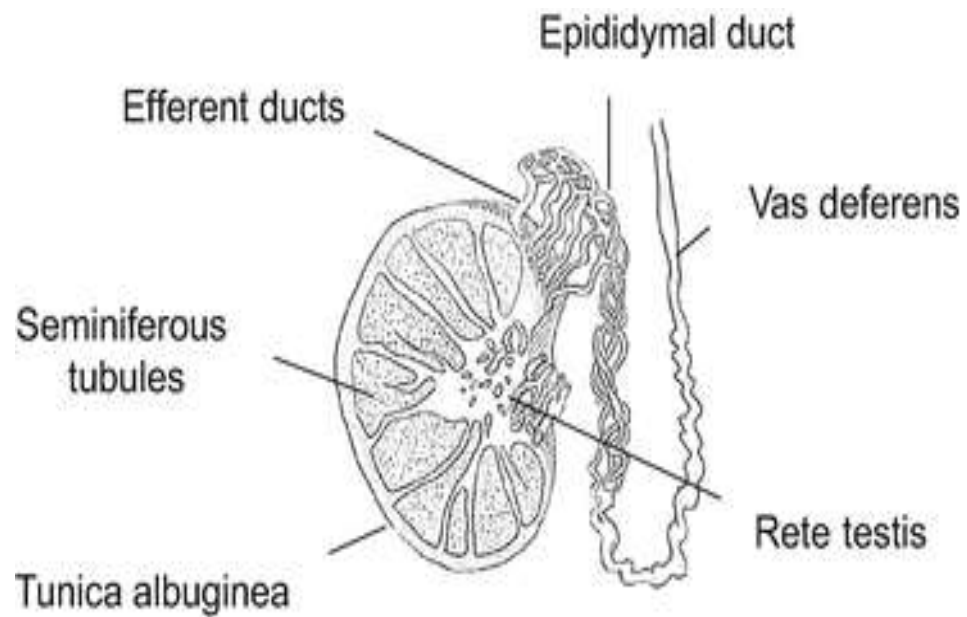
- The male reproductive system in human beings is composed of following parts:
 -
 - **a-Testis:**
 - There is a pair of **testes**; which lie in a skin pouch; called **scrotum**.
 - Scrotum is suspended outside the body; below the abdominal cavity.
 - This helps in maintaining the temperature of testes below the body temperature.
 - This is necessary for optimum **sperm** production.
 - **Sperms** are the **male gametes**.
 - Apart from that, testis also produces **testosterone**.
 - Testosterone is also called the male hormone, as it is responsible for developing certain secondary sexual characters in boys.

b- epididymis

- It is highly coiled structure found on the upper side of the testes.
- i- site of sperm maturation : about 10-14 days are required for the sperm to mature.
- ii- store mature sperm: sperms may remain in storage for up to 4 weeks .After that they are expelled from the epididymis or reabsorbed.

c-Vas Deferens:

- Vas deferens is the tube which carries sperms to the seminal vesicle.



d-Seminal Vesicle:

- This is the place where sperms are stored.
- it provide alkaline substances which contains carbohydrate, proteins and hormones
- Carbohydrates provides the energy source for the sperms
- Protein helps in sperm coagulation.
- Alkaline nature of the fluid protect the sperm from acidic condition.

e – prostate gland

- It is present at the base of the urinary bladder which encircling the urethra
- It secretes thin , alkaline ,milky substances which contributes to sperm motility and viability.

f- cowper's glands

- It is located under the prostate gland
- It secretes the mucus which lubricates the end of the penis during sexual intercourse.

g-Penis:

- It is a muscular organ
- It carries urine.
- Transfers the sperm in to the female body.

semen

- Semen is a mixture of sperm and the secretions of seminal vesicles, prostate gland ,and Cowper's gland
- It is a milky white fluid.
- A single ejaculation contains 2-3 ml semen.
- A single ejaculation contains 20,000,000 – 40,000,000 sperms.

THANKING YOU
ODM EDUCATIONAL GROUP.

