



SUBJECT: BIOLOGY

CHAPTER: 5

CHAPTER NAME: ENDOCRINE SYSTEM AND ADOLESCENCE.

PERIOD-3

CHANGING YOUR TOMORROW

Website: www.odmegroup.org

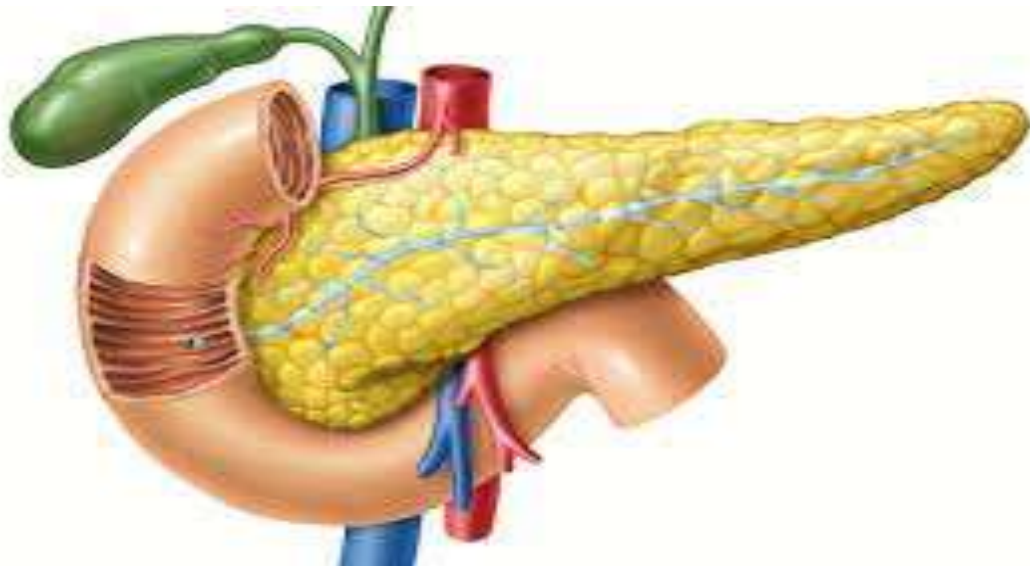
Email: info@odmps.org

Toll Free: **1800 120 2316**

Sishu Vihar, Infocity Road, Patia, Bhubaneswar- 751024

Pancreas gland

- Location- behind stomach
- Hormone Secretion- insulin and glucagon
- Functions-regulates amount of glucose in blood



- <https://www.youtube.com/watch?v=bqpHnOcWvdM>

Pituitary gland

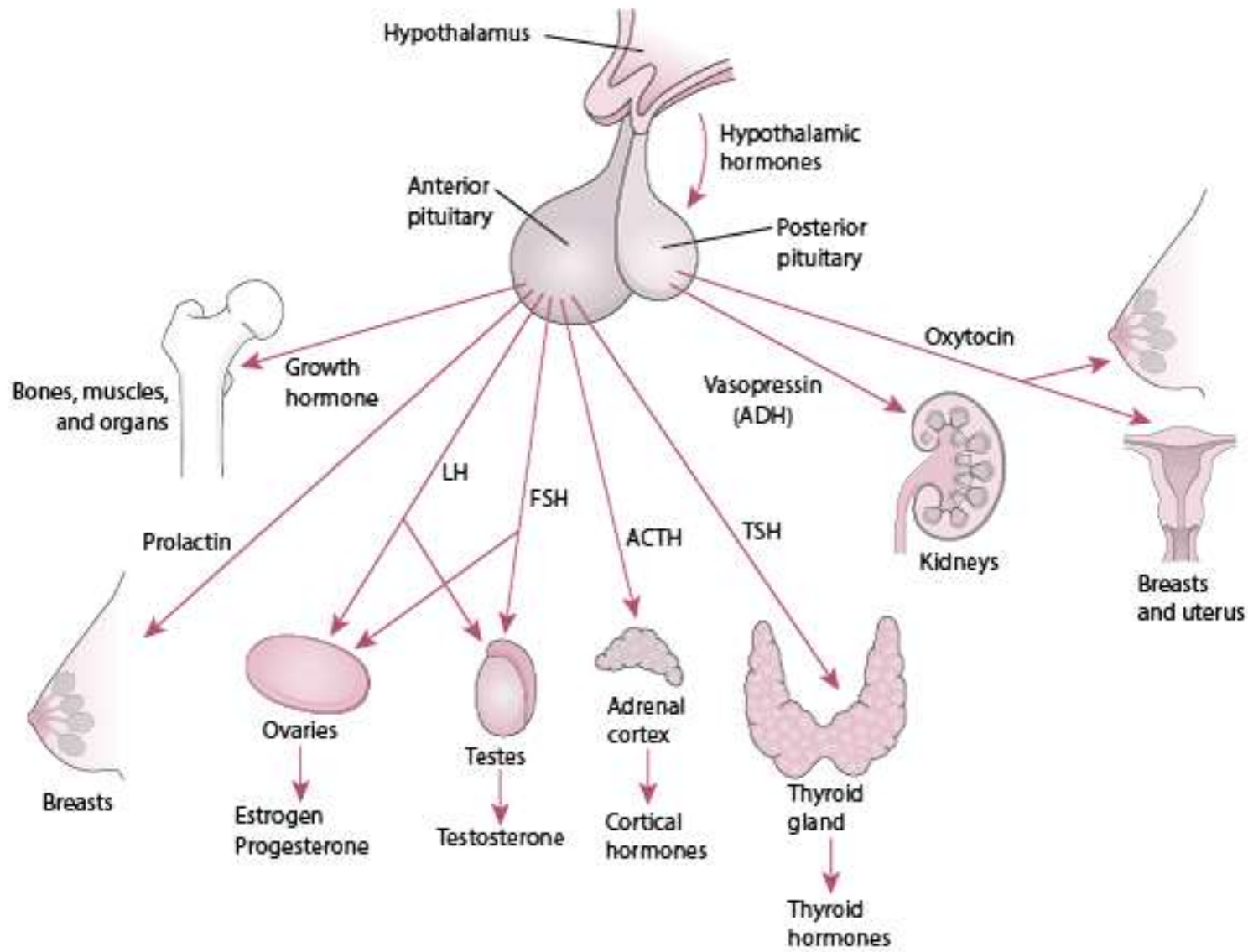
Location- below the brain

Secretion – growth hormone (GH)

Thyroid stimulating hormones. (TSH)

Follicle –stimulating hormone(FSH)

Function-stimulate growth,stimulates the thyroid gland to secretethyroxine. Stimulates the production of sex cells in male and female.



- https://www.youtube.com/watch?v=3AKHx6b_TRE

THANKING YOU
ODM EDUCATIONAL GROUP.

