



SUBJECT: BIOLOGY  
CHAPTER: 2  
CHAPTER NAME: REPRODUCTION IN PLANTS..  
PERIOD-4

---

**CHANGING YOUR TOMORROW**

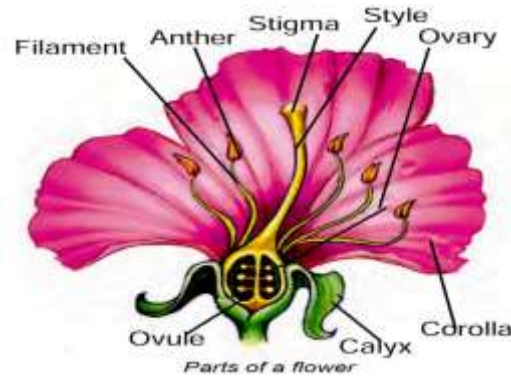
---

Website: [www.odmegroup.org](http://www.odmegroup.org)  
Email: [info@odmps.org](mailto:info@odmps.org)

Toll Free: **1800 120 2316**  
Sishu Vihar, Infocity Road, Patia, Bhubaneswar- 751024

# PARTS OF A TYPICAL FLOWER

- A flower is a modified shoot with a limited growth. Flowers vary in size, shape, structure and colour. The main parts of a flower are,
- 1. Calyx
- 2. Corolla
- 3. Androecium and
- 4. Gynoecium.

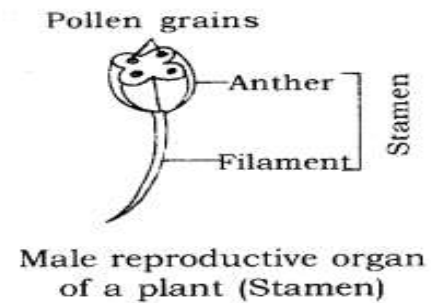
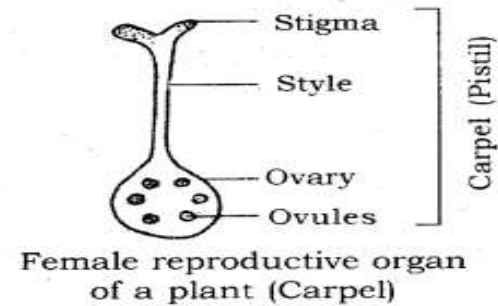


- <https://www.youtube.com/watch?v=5O-q3aIPFOo>

- **Sepals**-Sepals are green structures that protect the inner parts when the flower is in bud stage.
- **Petals**-Petals are colourful and attract the insects for pollination.
- **Stamens**-Stamens are male reproductive parts and produce pollen grains that contain male gametes. Each stamen has two parts—
- Filament i.e. stalk and Anther i.e. swollen top part which has large number of pollen grains.



- **Carpel**-The carpel is the female reproductive part and produces ovules that contain female gametes. It has three parts—Stigma which is top sticky part and receives pollen grains during pollination. Style which is the middle long part and ovary which is the swollen part and contains ovules. Each ovule has an egg cell i.e. female gamete.



## Bisexual Flower.

- The flowers may be bisexual i.e. having both stamens and carpels for example; Mustard China Rose (Hibiscus).



## Unisexual flower

- The flower may be unisexual i.e. having either stamens or carpels for example; Papaya, Watermelon.



## HOME ASSIGNMENTS

- Exercise Question No- 4 and Long Answer Question No-6





THANKING YOU  
ODM EDUCATIONAL GROUP.

