



SUBJECT: BIOLOGY

CHAPTER: 2

CHAPTER NAME: REPRODUCTION IN PLANTS..

PERIOD-5

---

**CHANGING YOUR TOMORROW**

---

Website: [www.odmegroup.org](http://www.odmegroup.org)

Email: [info@odmps.org](mailto:info@odmps.org)

Toll Free: **1800 120 2316**

Sishu Vihar, Infocity Road, Patia, Bhubaneswar- 751024

# POLLINATION

- Transfer of pollen grains from the anther to the stigma is called pollination. Pollen grains are transferred mainly by wind, water and insects. They are called as pollinating agents. Pollination is the first and important event in the development of the fruit and seed. Pollination is followed by fertilization.



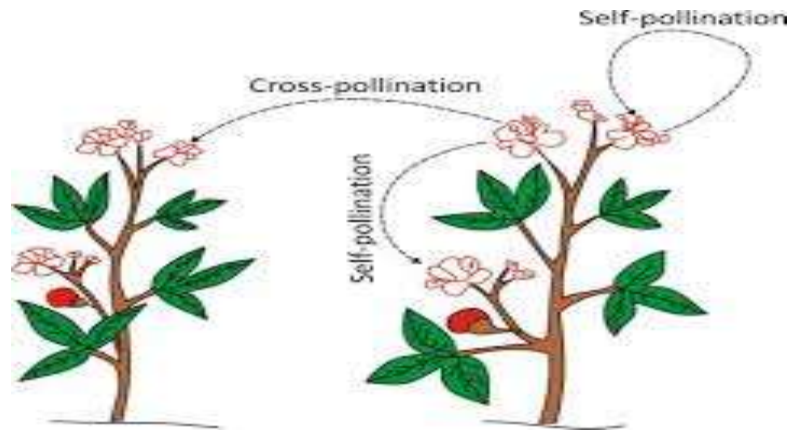
# SELF POLLINATION

- Self pollination is also known as autogamy. The transfer of pollen grains from the anther of a flower to the stigma of the same flower or another flower of the same plant is known as self pollination.



## CROSS POLLINATION (ALLOGAMY)

- The transfer of pollen grains of a flower to the stigma of another flower of a different plant of the same species is called cross pollination or allogamy.



## ADVANTAGES OF SELF POLLINATION

- Self pollination is certain in bisexual flowers.
- Flowers need not depend on agents of pollination.
- There is no wastage of pollen grains

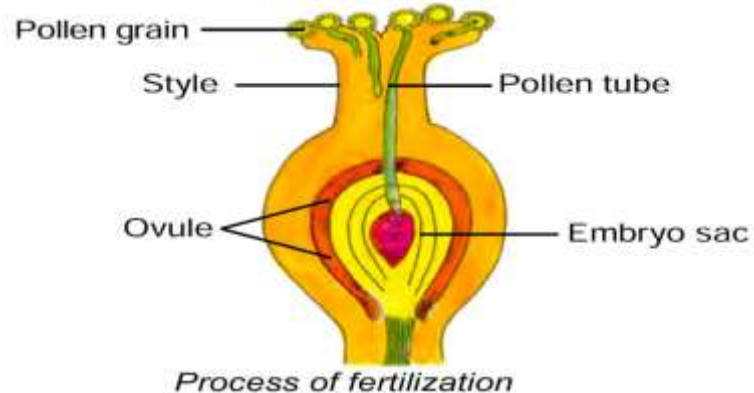
<https://www.youtube.com/watch?v=3cmB7bnymnk>

# AGENTS OF POLLINATION

- Wind
- Water
- Insects
- Animals

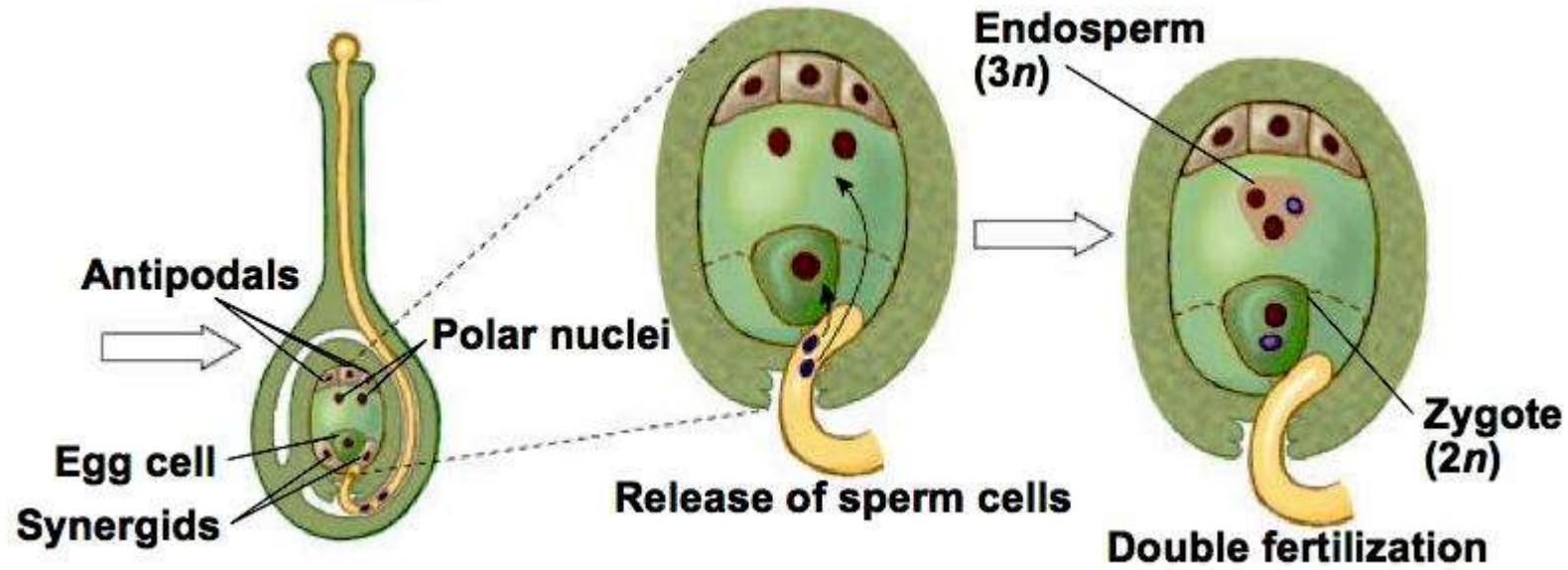
## PROCESS OF FERTILIZATION

- The pollen tube enters into the embryo sac through micropyle. At this time, the pollen tube bursts open, gametes released from the pollen tube and enter into the embryosac. One of the gametes fuses with the egg, and the other fuses with the secondary nucleus. The fusion of a male gamete with egg is known as fertilization. The fertilized egg is known as zygote which develops into embryo.





# DOUBLE FERTILIZATION



## Post fertilization events-

- The ovule develops into seed.
- The integuments of the ovule develop into seed coats.
- The ovary enlarges and develops into fruit.



## Artificial pollination



# HOME ASSIGNMENTS

- Exercise short Question No- 2, and Long Answer Question No-8,5

THANKING YOU  
ODM EDUCATIONAL GROUP.

