



**CLASS : 2**  
**SESSION NO : 2**  
**SUBJECT : MATHEMATICS**  
**TOPIC: CH-7 DIVISION AND CH 8 GEOMETRY**  
**SUB TOPIC:REVISION WORK - 2.**

---

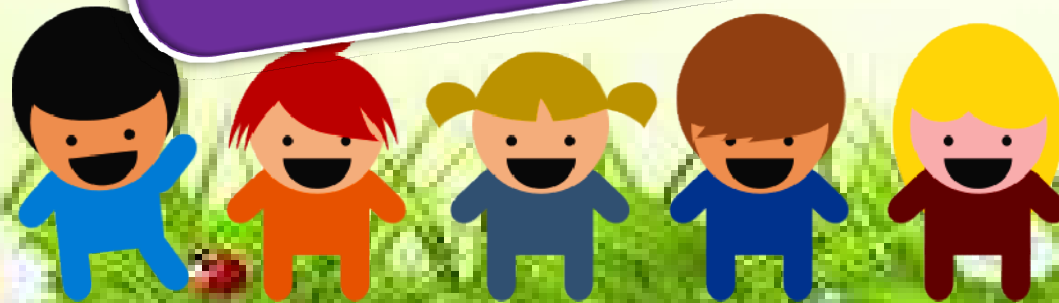
**CHANGING YOUR TOMORROW**

---

Website: [www.odmegroup.org](http://www.odmegroup.org)  
Email: [info@odmps.org](mailto:info@odmps.org)

Toll Free: **1800 120 2316**  
Sishu Vihar, Infocity Road, Patia, Bhubaneswar- 751024

**LEARNING OBJECTIVE:** Children will be able to reflect what they have written.





TODAY'S TOPIC

REVISION WORK-2

CH-7 DIVISION

CH-8 GEOMETRY

## REVISION WORK-2

Q1. Solve it.

A sweet shop has made 97 sweets. They have to be packed in 9 boxes. How many sweets will be packed in each box? How many sweets will be left?

Number of sweets = 97

Number of boxes = 9

Number of sweets in each box = 10

Number of sweets will be left = 7

$$\begin{array}{r} 10 \\ 9 \overline{) 97} \\ \underline{9} \phantom{0} \\ 07 \\ \underline{0} \\ 7 \end{array}$$

**Q2. Do as directed.**

**a. Choose the correct answer and fill in the blanks.**

**a. The number which is being divided is the dividend.**

**i. dividend      ii. divisor      iii. quotient**

**b. A square has 4 vertices.**

**i. 3      ii. 4      iii. 5**

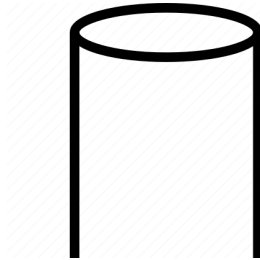
**c. An edge is a side where two faces meet.**

**i. side      ii. vertices      iii. length**

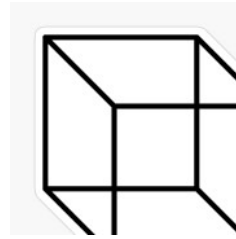
**b. Identify the given shapes.**



Rhombus



Cylinder



Cube

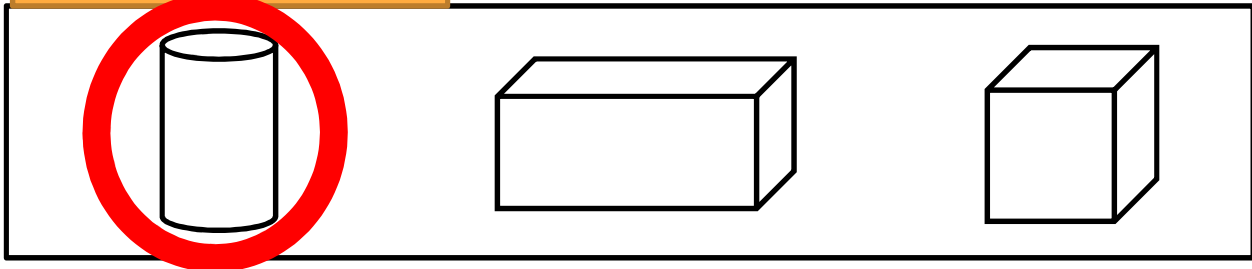
**c. Put 18 icecreams equally in 2 plates. How many icecreams will be there in each plate?**

Plate 1: 9 ice creams

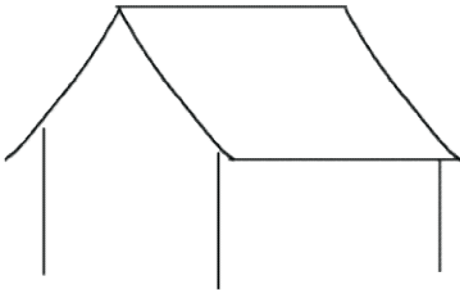
Plate 2: 9 ice creams

**d.Circle the correct shape.**

Having a curved face



**e.Look at the figure and write the number of:**



Horizontal lines- **2**

Vertical lines- **3**

Curved lines- **3**



**SUB**

**HOME ASSIGNMENT**

**Mathematics**

---

Expected learning  
outcome: Children  
are able to **reflect**  
**what they have**  
**written.**

**THANKING YOU**  
**ODM EDUCATIONAL GROUP**