

SESSION : 10
CLASS : I
SUBJECT : EVS
CHAPTER NUMBER: 11
CHAPTER NAME : ANIMALS AROUND US
SUBTOPIC : ANIMALS AND THEIR BABIES,
TEXTUAL QUESTIONS- MARK THE SENTENCES AS
TRUE OR NOT TRUE, MATCH THE ANIMALS WITH
THEIR BABIES

CHANGING YOUR TOMORROW

LEARNING OBJECTIVE :

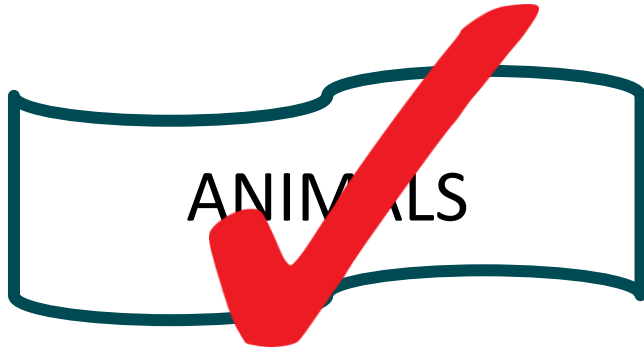
- Students will be able to know about the name of the babies of different animals.



ANIMALS AROUND US

Activity

Choose the correct word.



Activity

Choose the correct word.

FORIST

FOREST



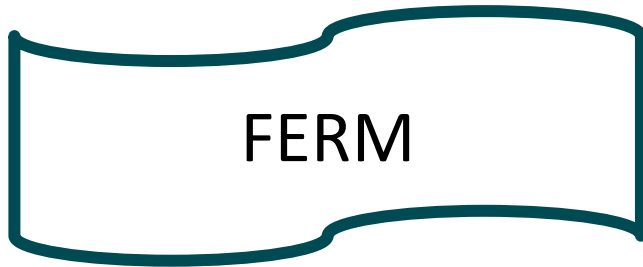
Activity

Choose the correct word.



Activity

Choose the correct word.



Activity

Choose the correct word.

HURM

HARM



Activity

Choose the correct word.

TIGAR

TIGER



Farm animals

- Many animals live on a farm, they are called **farm animals**.
- Examples- cow, hen, duck, pig, goat, sheep etc...
- They are useful to us.



COW



DUCK



SHEEP



PIG



GOAT



HEN

Importance of farm animals.



❖ We get eggs from hens and ducks.

❖ We get wool from sheep.



❖ We get milk from cows .

Pet animals

- **Pet** animals stay at home with us.
- Dogs and cats are the most common pets.



Dog



Cat

➤ We must not harm animals.

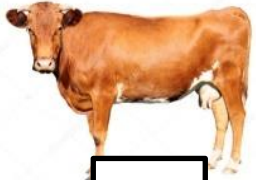


➤ We must take care of them.



C.W
Dt.

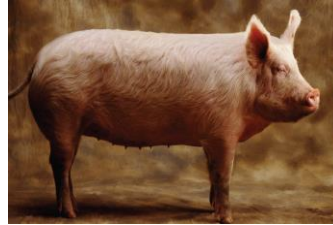
Animals and their babies



COW



Calf



Pig



piglet



Goat



kid



Dog



Puppy



Lion



cub



Duck



Ducklings



Hen



Chicks

Q1. Mark the sentences as true or not true.

(a) A dog guards the farm.

(✓)

(b) Lions and tigers live on a farm.

(✗)

(c) We must not harm animals.

(✓)

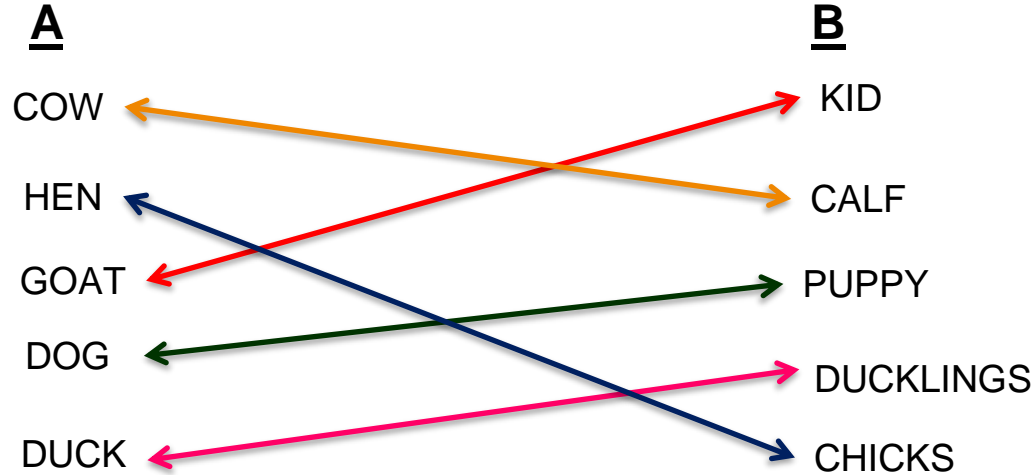
(d) Rat chase cats.

(✗)

(e) Pets can take care of themselves.

(✗)

Q2. Match the animals with their babies



Name the babies of the animals.(oral)

1. Baby of a cow-

calf

2. Baby of a lion-

cub

3. Baby of a goat-

kid

4. Baby of a dog-

puppy

5. Baby of a pig

piglet



Home assignment

- Paste the picture of any two farm animals and two pet animals in your scrapbook and write their names.

LEARNING OUTCOME:

- ❖ Students are able to know the names of babies of different animals.

THANKING YOU
ODM EDUCATIONAL GROUP