



PRAYER  
TIME



**SESSION : 4**

**CLASS : 2**

**SUBJECT : EVS**

**CHAPTER NUMBER: 8**

**CHAPTER NAME : PLANTS AROUND ME**

**SUB TOPIC : TEXTUAL QUESTIONS**

---

**CHANGING YOUR TOMORROW**

---

# LEARNING OUTCOME:-

- ❖ Will be able to answer the fill in the blank and answer the following questions.





# PLANTS AROUND ME

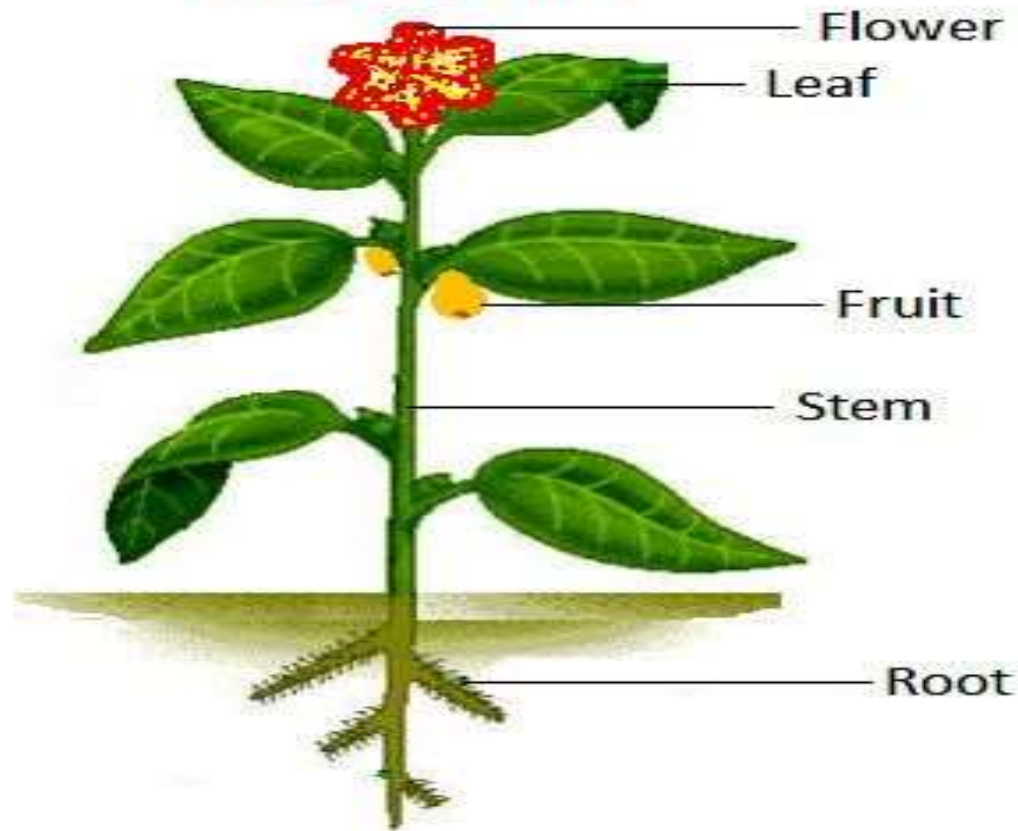


# IMPORTANCE OF PLANTS :-

- ❑ Plants are very useful to us.
- ❑ We get many things from plants such as food, wood, medicine etc.
- ❑ Most of our food that we eat comes from plants.  
**For example :-** Fruits, vegetables, cereals, pulses etc.
- ❑ Plants give us oxygen to breathe.



## Parts of plant





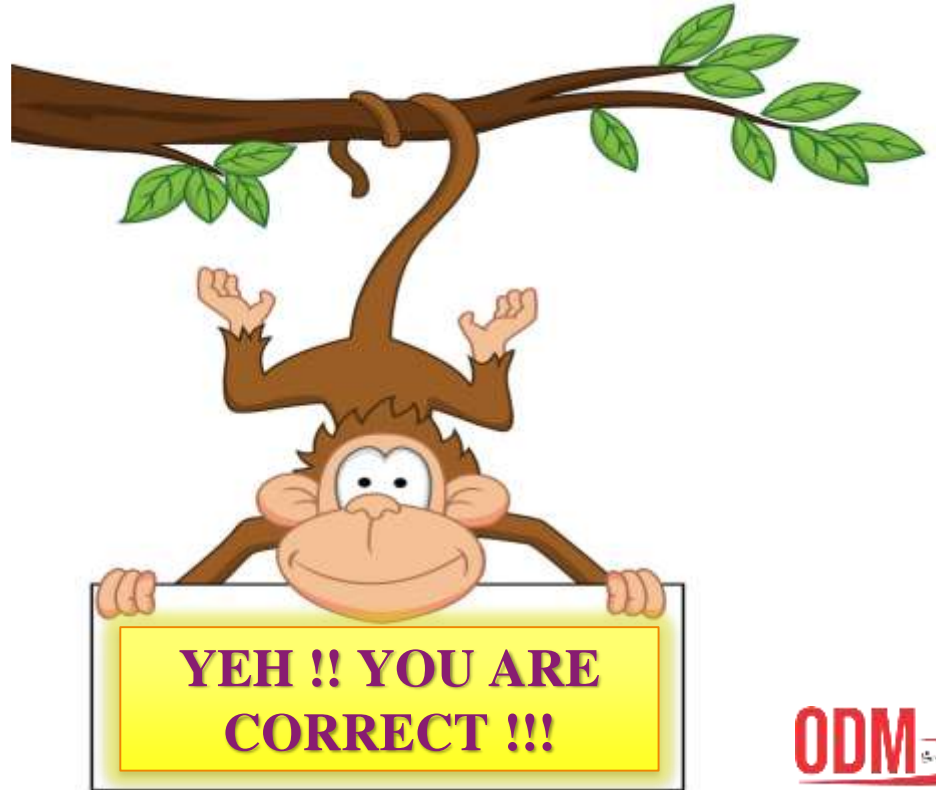
**SPELL  
WELL**



# CHOOSE THE CORRECT SPELLING :-

(a) Tronk

(b) Trunk



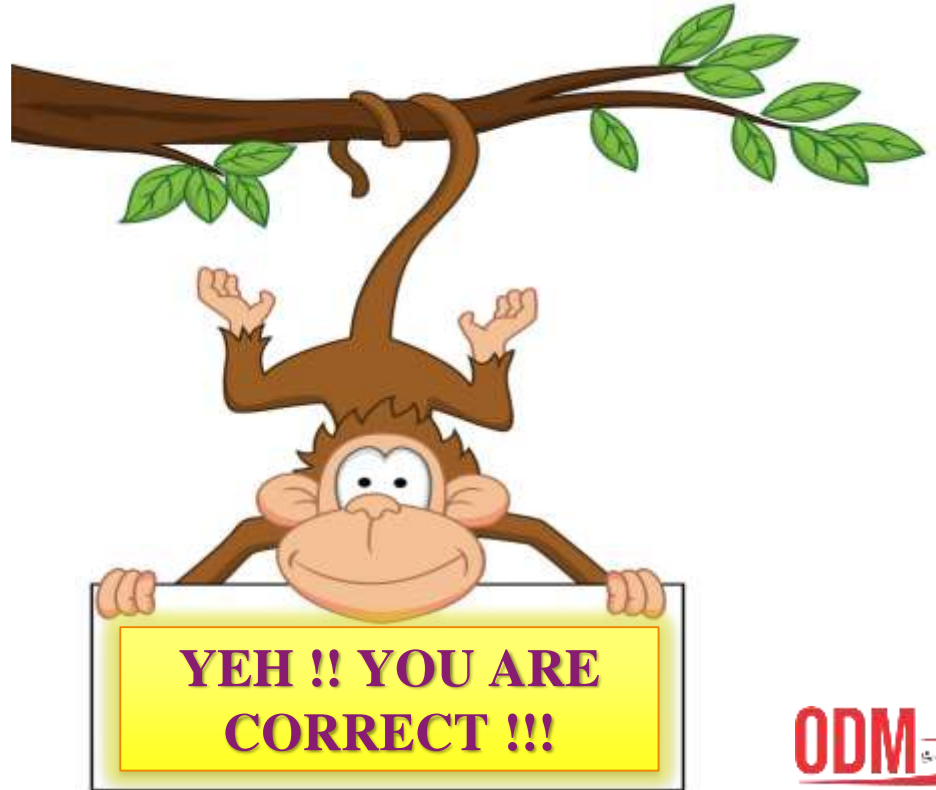
# CHOOSE THE CORRECT SPELLING :-

(a)

Plants

(b)

Plaints



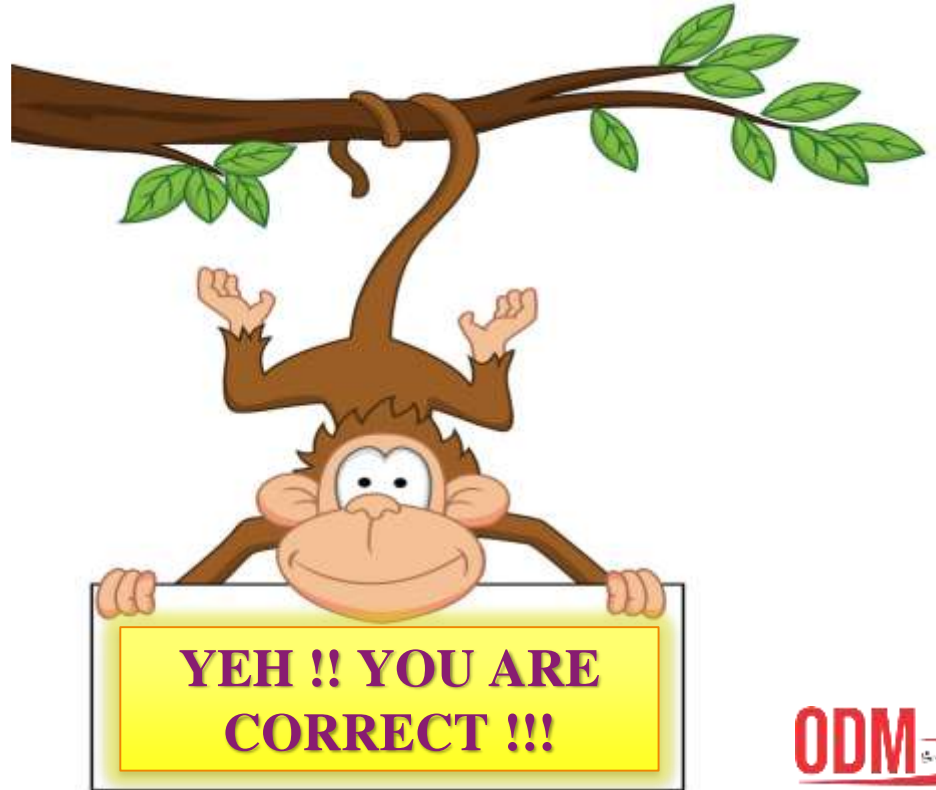
# CHOOSE THE CORRECT SPELLING :-

(a)

Shrubs

(b)

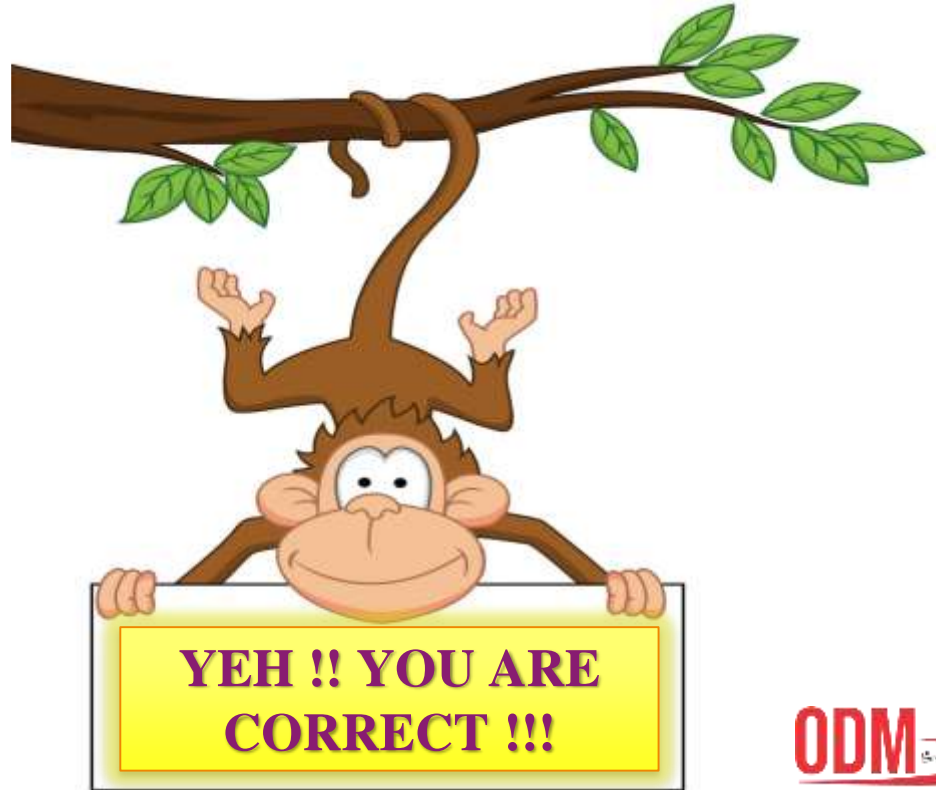
Shurbs



# CHOOSE THE CORRECT SPELLING :-

(a) Cottun

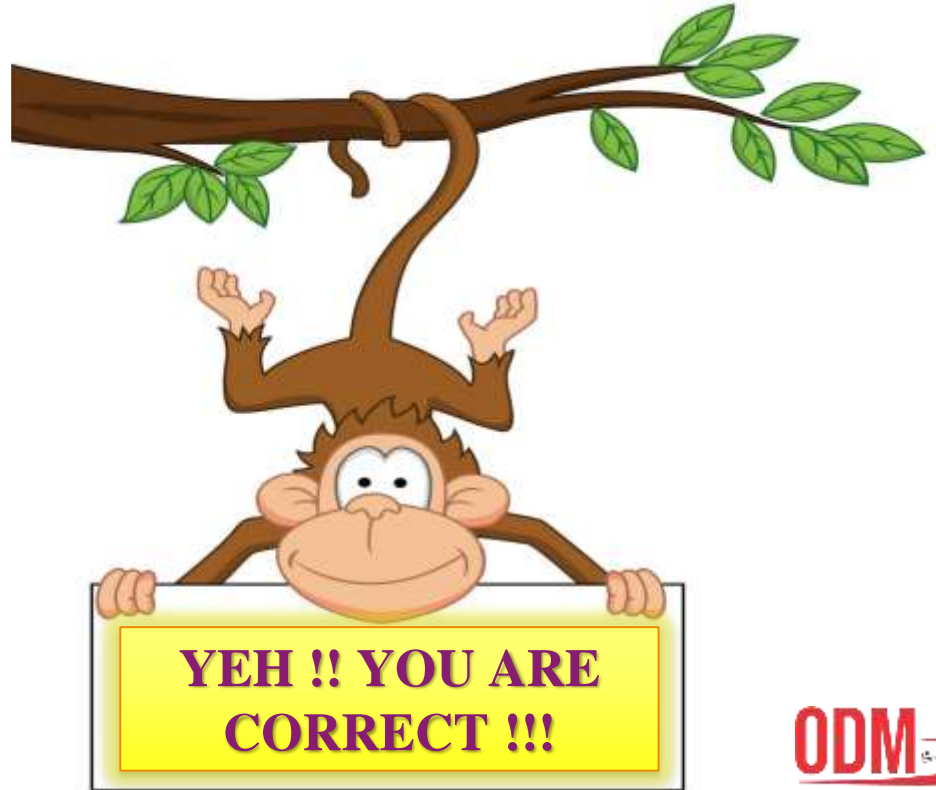
(b) Cotton



# CHOOSE THE CORRECT SPELLING :-

(a)

Leaves



(b)

Leives

Dt.

## 1. Fill in the blanks :-

(a) Plants make their food in their leaves.

(b) Shrubs have hard, woody stems.

(c) Plants are home to many animals.

(d) Small plants with weak stems are called

herbs.



## 2. Answer the following questions :-

**(a) What are called trees ?**

**Ans** → The big and tall plants are called trees.

**Example :-** Mango tree and Coconut tree

**(b) Write the different parts of a plant ?**

**Ans** → The different parts of a plant are root, stem, leaf, flower and fruit.

**(c) What are called shrubs ?**

**Ans** → Small plants with hard stems are called shrubs.

**Example :-** Rose plant and Chilli plant



# LEARNING OUTCOME:-

- ❖ **Able to answer the fill in the blanks and answer the following questions.**





**THANKING YOU**  
**ODM EDUCATIONAL GROUP**