

PRAYER  
TIME



**SESSION : 6**

**CLASS : 2**

**SUBJECT : EVS**

**CHAPTER NUMBER: 8**

**CHAPTER NAME : PLANTS AROUND ME**

**SUB TOPIC : ACTIVITY AND CLASS TEST**

---

**CHANGING YOUR TOMORROW**

---

# LEARNING OBJECTIVES:-

- ❖ Be able to know about a concrete idea of this chapter.



QUI

Z



Bagvania.com

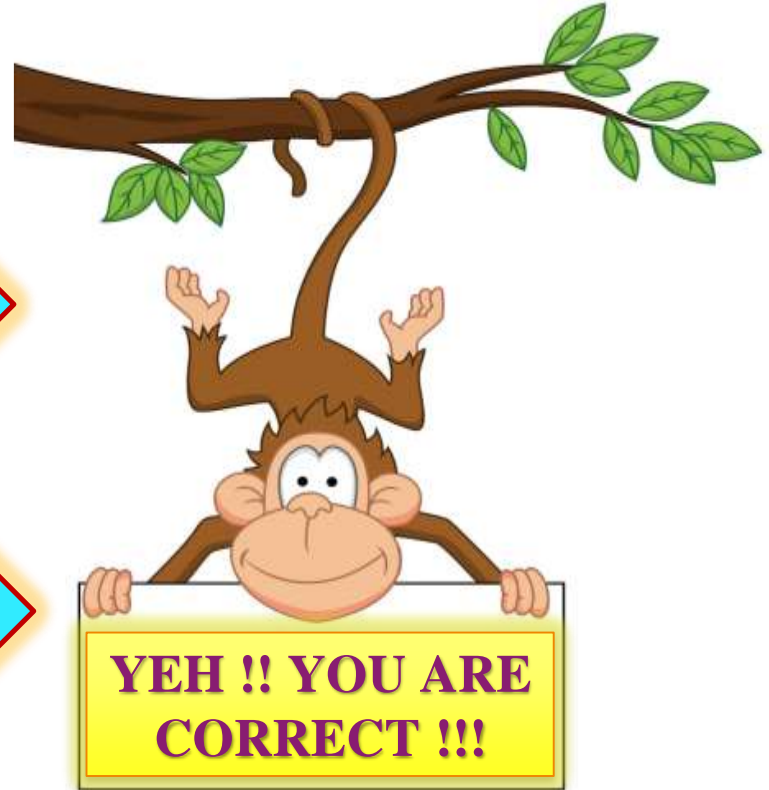
# UNJUMBLE THE WORDS :-

(a) SEXIF →

**FIXES**

(b) REOWLF →

**FLOWER**

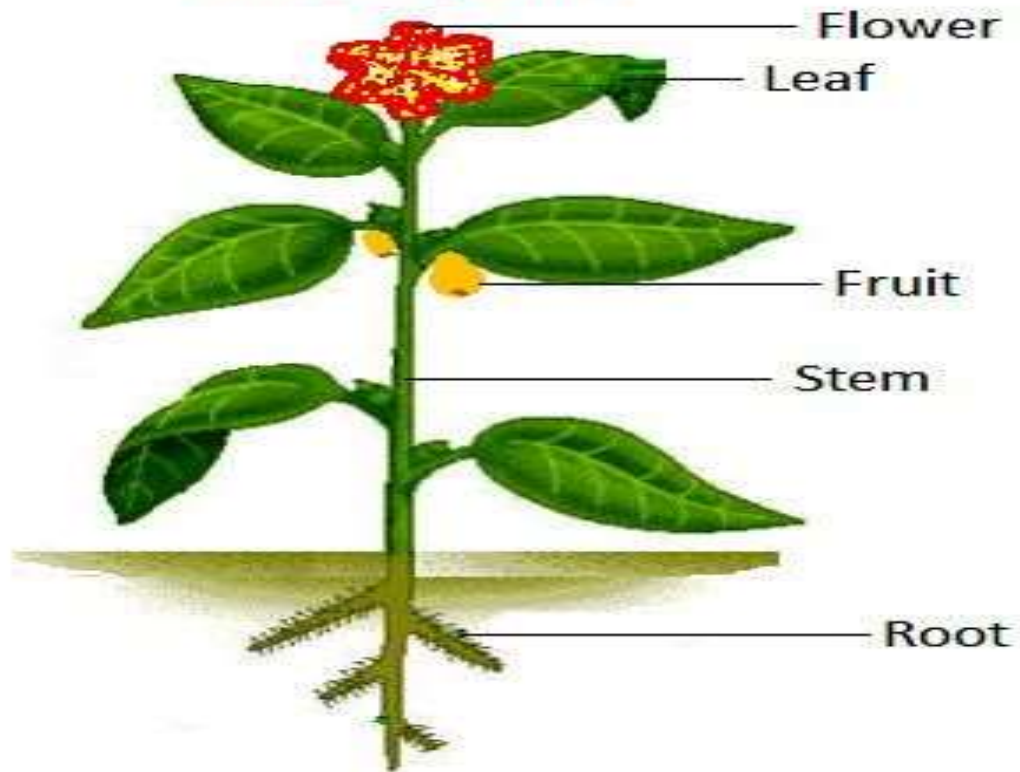






# TULSI PLANT

## Parts of plant



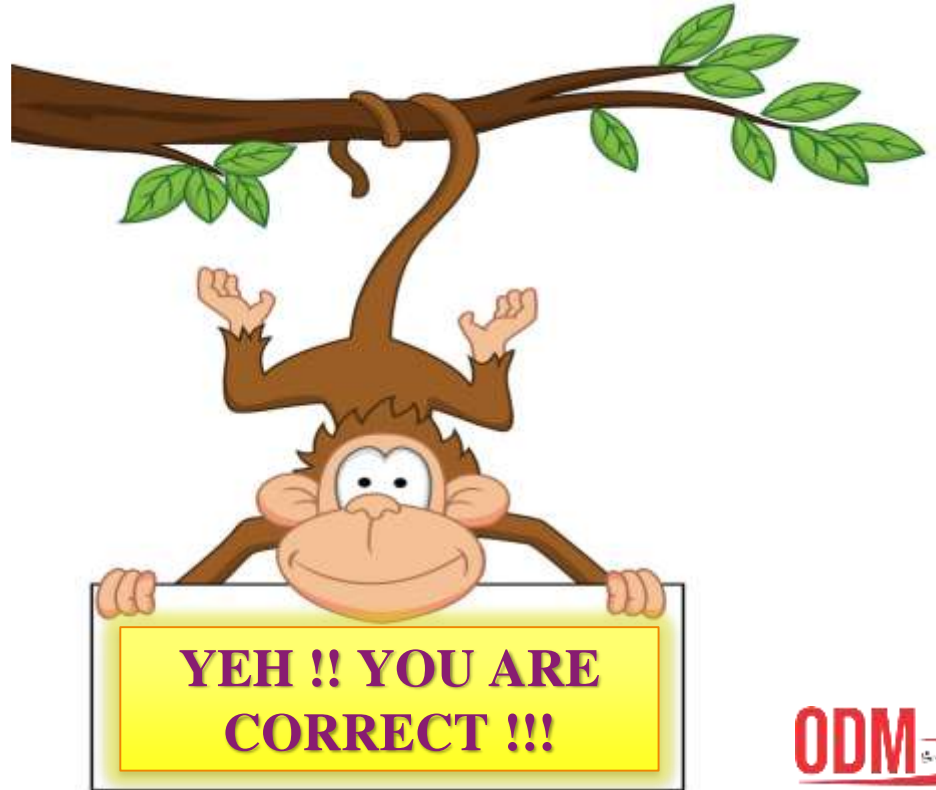
# CHOOSE THE CORRECT SPELLING :-

(a)

Shrubs

(b)

Shurbs





## CHOOSE THE CORRECT ANSWER :-

(5) Plant is the home of many

\_\_\_\_\_.

[a] tables

[b] animals

[c] chairs



# CLASS TEST

twallpapersbackgrounds.blogspot.com

Dt.

## 1. Fill in the blanks :-

(a) Plants make their food in their \_\_\_\_\_.

(b) Shrubs have hard, woody \_\_\_\_\_.

(c) Plants are home to many \_\_\_\_\_.

(d) Small plants with weak stems are called

\_\_\_\_\_.



## 2. Answer the following questions :-

(a) What are called trees ?

Ans →

(b) Why are the leaves of a plant important ?

Ans →



### 3. Unjumble the words :-

(a) STNLPA →



(b) NEYKOM →



(c) DNORUG →



(d) OOCCTNU →





LETS CHECK  
THE  
ANSWER



Dt.

## 1. Fill in the blanks :-

(a) Plants make their food in their leaves.

(b) Shrubs have hard, woody stems.

(c) Plants are home to many animals.

(d) Small plants with weak stems are called

herbs.



## 2. Answer the following questions :-

**(a) What are called trees ?**

**Ans** → The big and tall plants are called trees.

**Example** :- Mango tree and Coconut tree

**(b) Why are the leaves of a plant important ?**

**Ans** → The leaves of a plant are important because it makes food for the plant.



### 3. Unjumble the words :-

(a) STNLPA →

PLANTS

(b) NEYKOM →

MONKEY

(c) DNORUG →

GROUND

(d) OOCCTNU →

COCONUT



# LEARNING OUTCOME:-

- ❖ **Students will get a clear concept about the chapter.**



**THANKING YOU**  
**ODM EDUCATIONAL GROUP**