

**SESSION : 4**

**CLASS : III**

**SUBJECT- SOCIAL SCIENCE**

**CHAPTER NUMBER: 04**

**CHAPTER NAME :OUR COUNTRY INDIA**

**SUBTOPIC : THE DECCAN PLATEAU AND THE GHATS..**

---

**CHANGING YOUR TOMORROW**

---

# LEARNING OBJECTIVE

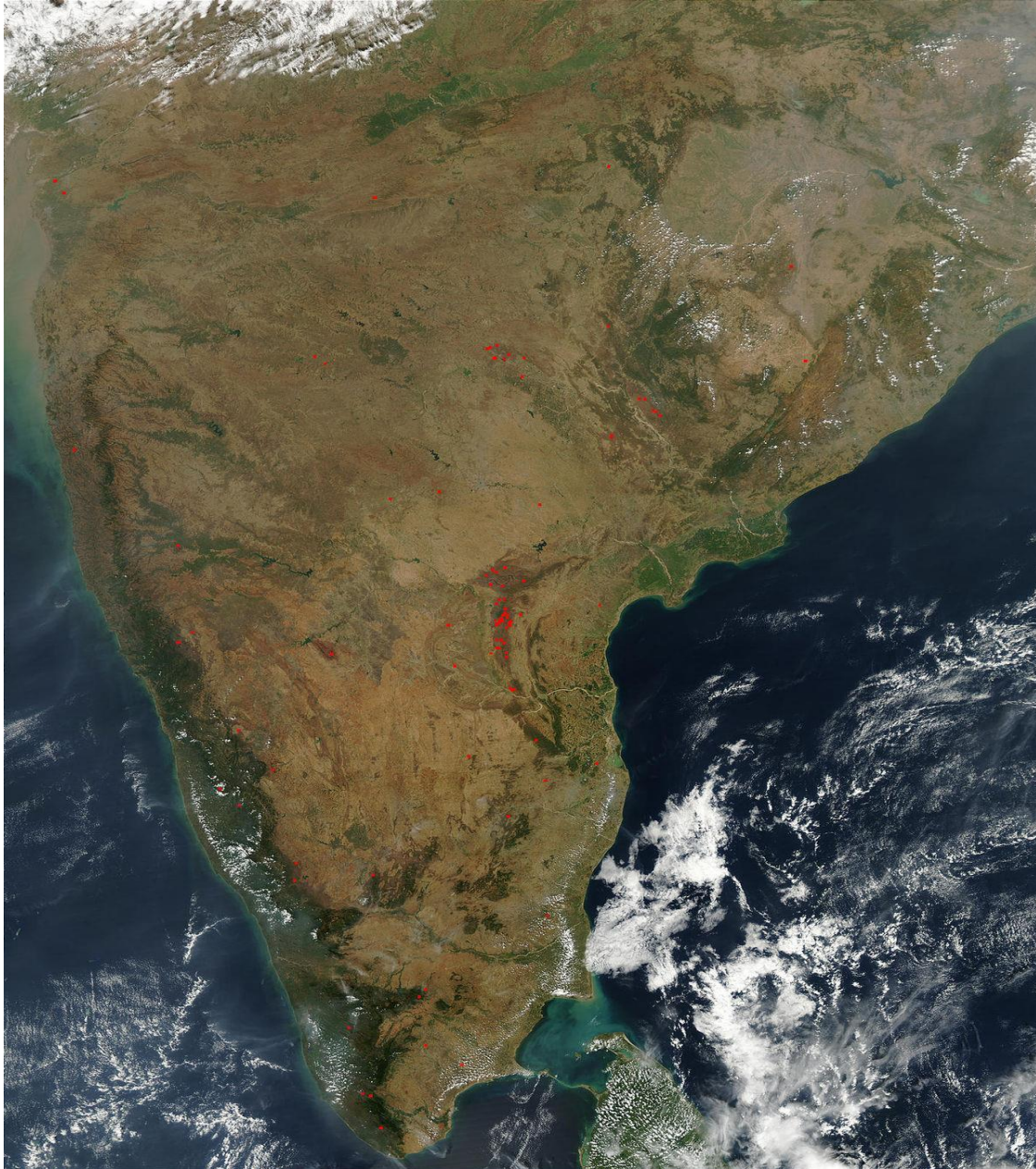
## To enable the learner to:

- The physical features of India
- The southern plateau and ghats

# The Decan Plateau and the Ghats:

- The southern part of India is a peninsula.
- A peninsula is a piece of land jutting into the sea and surrounded by large water bodies on its three sides.
- The Indian peninsula has the Bay of Bengal to its east, the Arabian sea to its west and Indian ocean to its south.
- This part of India is called the Decan Plateau.
- A plateau is a flat-topped region that is raised above the surrounding land.





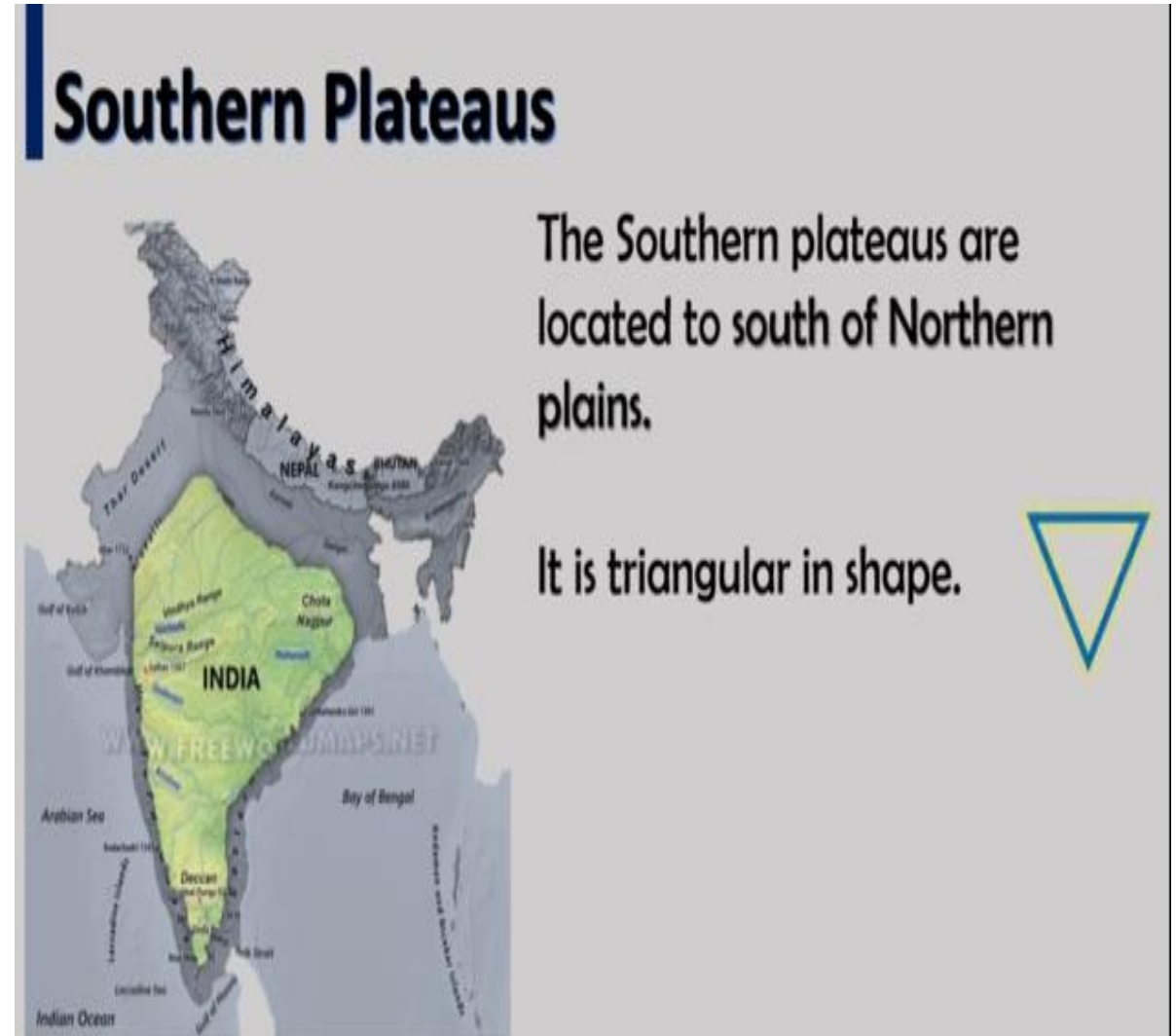
Plateau is a flat-topped landform that rises sharply from the surrounding area.



# The Deccan Plateau



- The Deccan Plateau region has many rivers like the Krishna, Kaveri, Godavari and Mahanadi. These rivers are rain-fed.
- They often become dry during the summer, unlike the snow-fed rivers of the north.
- This region is very rich in minerals. Some parts of the plateau are covered with thick forests.
- This region has a moderate climate that is neither too hot nor too cold.



# DEFINE THE FOLLOWING

1. Mountain range- Mountains occurs in long rows called mountain range.
2. Plains- Plains are flat lands with gentle slopes.
3. Plateau- A large land that higher than the surroundings and more or less flat at the top.
4. Desert- Desert are land cover with sand and extremely dry areas of land.
5. Peninsula- A land mass which projects into sea and surrounded by water on three sides.
6. Snow-fed river- River fed by melting of snow.
7. Rain-fed river –River fed from rain.



# Home Assignment

- Write the difference between snow fed rivers and rain fed rivers

# LEARNING OUTCOME :

## Learner will able to know :

- The physical features of India
- The southern plateau and ghats

**THANKING YOU**  
**ODM EDUCATIONAL GROUP**