



SESSION : 10

CLASS : V

SUBJECT : ENGLISH

CHAPTER NUMBER : 4

**CHAPTER NAME : REFLEXIVE AND EMPHATIC
PRONOUNS**

SUBTOPIC : Introduction and Ex – Q1, 2

CHANGING YOUR TOMORROW

Website: www.odmegroup.org

Email: info@odmps.org

Toll Free: **1800 120 2316**

Sishu Vihar, Infocity Road, Patia, Bhubaneswar- 751024

LEARNING OBJECTIVE

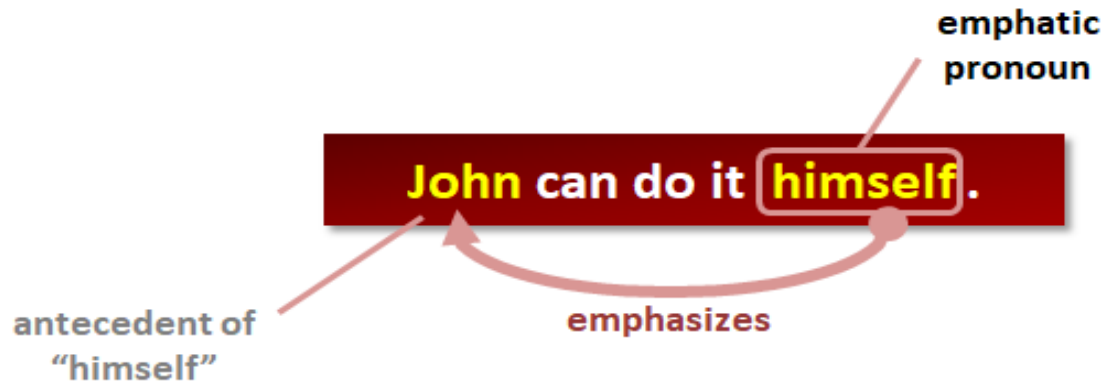
The students will be able to

- ✓ **gain the knowledge reflexive and emphatic pronouns .**
- ✓ **make usage of the above pronouns .**

Reflexive and Emphatic Pronouns



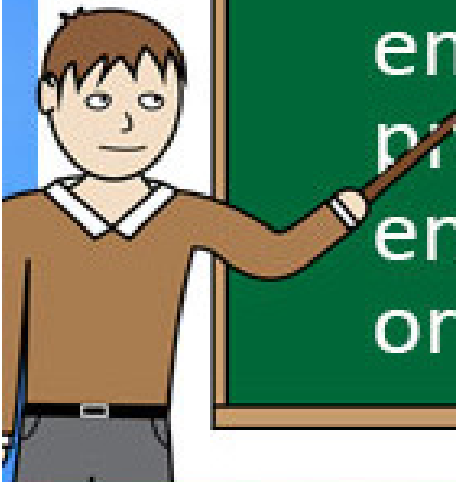
Emphatic Pronoun (Example 1)



Emphatic Pronoun (Example 2)



Intensive or Emphatic Pronouns



Intensive or
emphatic
pronouns
end in **-self**
or **-selves**.

- Himself
- Herself
- Ourselves
- Yourself
- Themselves

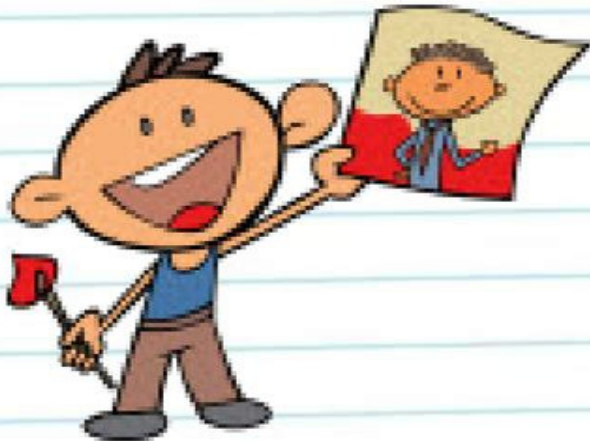
REFLEXIVE PRONOUNS

By *Harbor*



START

REFLEXIVE PRONOUNS- exercises



Look! I draw a picture
of myself



Laura couldn't carry the
bag by herself.

1) Underline the reflexive pronouns in these sentences. Circle the subjects they refer to.

a) He is teaching himself to play the piano.

Ans) **He** is teaching himself to play the piano.

b) My aunt busied herself in the kitchen.

Ans) My **aunt** busied herself in the kitchen.

c) We helped ourselves to the food.

Ans) **We** helped ourselves to the food.

d) We should behave ourselves in front of our elders.

Ans) **We** should behave ourselves in front of our elders.

e) You should not drive the car so fast. You will hurt yourself.

Ans) You should not drive the car so fast. **You** will hurt yourself.

f) They patted themselves on the back for their extraordinary victory.

Ans) **They** patted themselves on the back for their extraordinary victory.

g) A house divided against itself cannot stand.

Ans) A **house** divided against itself cannot stand.

2) Read the followings sentences. Underline the emphatic pronouns and circle the subject it refers to.

a) I myself cancelled the tickets.

Ans) **I** myself cancelled the tickets.

b) He himself feeds the birds.

Ans) **He** himself feeds the birds.

c) The house itself is so big.

Ans) **The** house itself is so big.

d) Swati herself planned the entire fashion show.

Ans) **Swati** herself planned the entire fashion show.

e) The cricket board members themselves contributed the money to fund the championship.

Ans) The **cricket board members** themselves contributed the money to fund the championship.

f) A calligrapher himself could not have written it more beautifully.

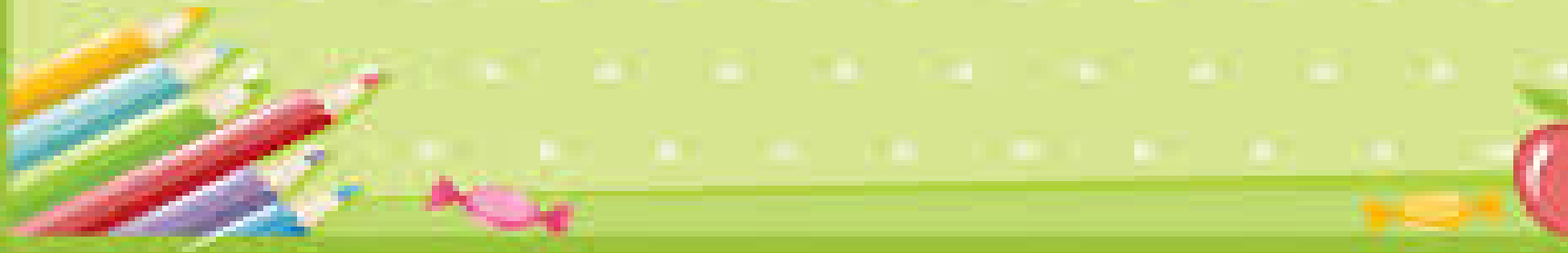
Ans) A **calligrapher** himself could not have written it more beautifully.

g) The facts themselves can be used to solve the crime.

Ans) The **facts** themselves can be used to solve the crime.

Homework

Read the definitions and examples



LEARNING OUTCOME

- **Knowledge of reflexive and emphatic pronoun.**
- **Usage of the above pronoun in real life application.**

Colourful Thank You Slide Design

T H A N K Y O U

