



SESSION : 11

CLASS : V

SUBJECT : ENGLISH

CHAPTER NUMBER : 4

**CHAPTER NAME : REFLEXIVE AND EMPHATIC
PRONOUNS**

SUBTOPIC : Ex – Q3, 4

CHANGING YOUR TOMORROW

Website: www.odmegroup.org

Email: info@odmps.org

Toll Free: **1800 120 2316**

Sishu Vihar, Infocity Road, Patia, Bhubaneswar- 751024

LEARNING OBJECTIVE

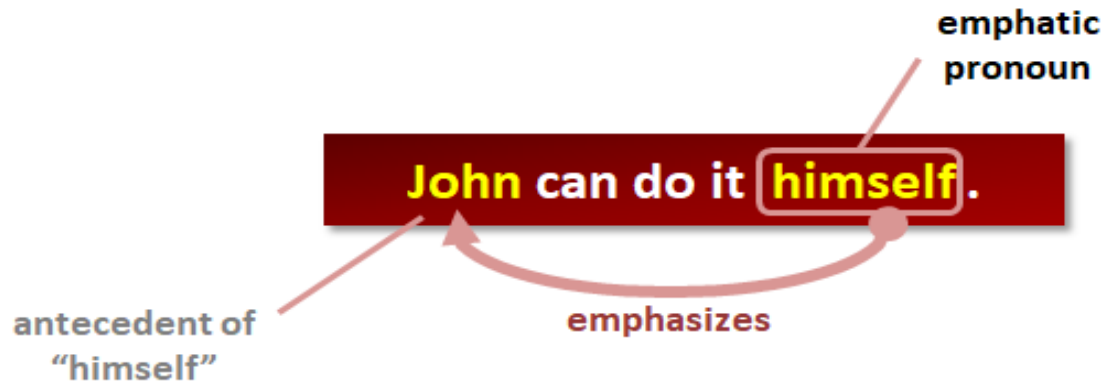
The students will be able to

- ✓ **gain the knowledge reflexive and emphatic pronouns .**
- ✓ **make usage of the above pronouns .**

Reflexive and Emphatic Pronouns



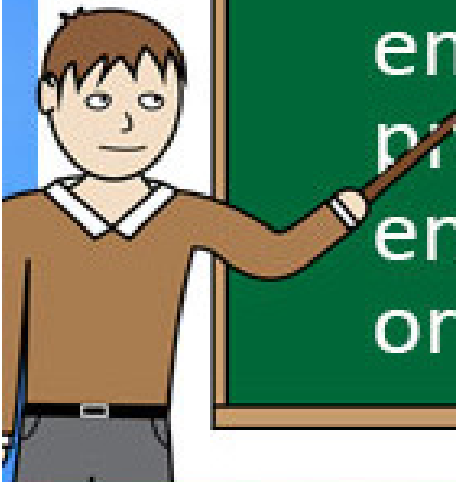
Emphatic Pronoun (Example 1)



Emphatic Pronoun (Example 2)



Intensive or Emphatic Pronouns



Intensive or
emphatic
pronouns
end in **-self**
or **-selves**.

- Himself
- Herself
- Ourselves
- Yourself
- Themselves

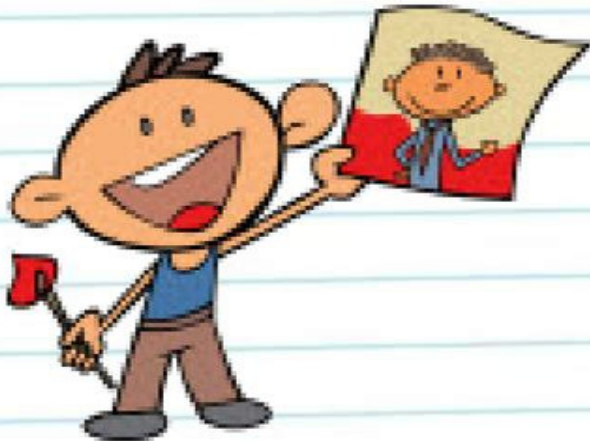
REFLEXIVE PRONOUNS

by *Florian*



START

REFLEXIVE PRONOUNS- exercises



Look! I draw a picture
of myself



Laura couldn't carry the
bag by herself .

3) Tick the type of pronoun used in the following sentences

Sentences	Reflexive	emphatic
I myself was not aware of the extra features of the new smart phone.		✓
We enjoyed ourselves at the party.	✓	
Do not go near the fire. You will burn yourself.	✓	
The thief himself admitted to his crime.		✓
She was in a hurry. So, she paid the bill herself.	✓	
I myself saw the big mountain collapse.		✓

4) Tick the correct pronoun in the following sentences. Write R for reflexive pronouns and E for emphatic pronouns in the blanks given.

✓

a) I gave (herself/myself) plenty of time to repair the refrigerator.

— —

✓

b) We treated (himself/ourselves) to burgers and cold drinks.

— —

✓

c) The boy hurt (himself/itself) while jumping on the bed.

— —

✓
d) The organisers (themselves/ourselves) made sure that everyone carries an entry ticket. ___ **E** ___

✓
e) They can take care of the house (themselves/itself).

___ **R** ___

✓
f) With the prize money, I can buy (myself/itself) a new motorbike.

___ **R** ___

✓
g) She (herself/ourselves) gets confused when she gives directions. ___ **E** ___

LEARNING OUTCOME

- **Knowledge of reflexive and emphatic pronoun.**
- **Usage of the above pronoun in real life application.**

Colourful Thank You Slide Design

T H A N K Y O U

