

# **WELCOME TO THE ONLINE CLASS**

**SESSION NO.: 4**

**CLASS: 4**

**SUBJECT: SCIENCE**

**CHAPTER NUMBER: 7**

**CHAPTER NAME: PLANTS- LIVING AND  
SURVIVING**

**SUB TOPIC: PLANTS IN GRASS FAMILY**

---

**CHANGING YOUR TOMORROW**

---

# LEARNING OBJECTIVE

**To enable the learner to:**

- **understand how plants from grass family is different.**
- **analyse plants from different plant kingdom.**

# RECAPITULATION

Match these plants with their group



floating plants

fixed plants

underwater plants

- Plants that grows in water are called \_\_\_\_\_.

# PLANTS OF THE GRASS FAMILY

- Cereal plants belong to the grass family of the plant kingdom.
- Grasses are a family of plants with leaves that usually look like blades.
- Most of them also have hollow stems and many branching roots.



# GRASS PLANTS ARE USEFUL TO US

- They provide food for humans and animals.
- Wheat, rice, jowar, bajra, sugarcane and fodder are obtained from plants of the grass family.



**BAJRA**



**WHEAT**



**SUGARCANE**



**JOWAR**

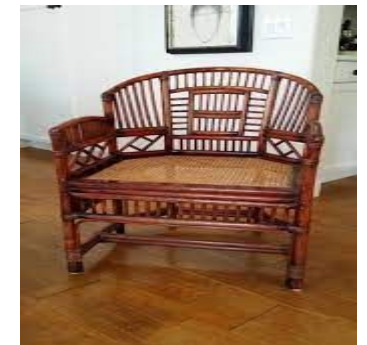


**RICE**

# GIANT GRASS



- Bamboo plants are known as giant grass.
- Bamboo is used for making things like brooms, basket, chairs, mats, curtains, toys and huts.
- Bamboo shoots have high nutritional value and are rich in vitamins.
- In many parts of India these are used for making tasty dishes.



- Various kinds of grasses are now used to make different types of paper.
- Some plants of the grass family are used in preparing medicines.
- Dried grass is used as packing material.
- The roots of the plants of the grass family help to conserve soil.



# SUMMARY

- **Cereal plants belong to the grass family of the plant kingdom.**
- **Wheat, rice, jowar, bajra, sugarcane and fodder are obtained from plants of the grass family.**
- **Bamboo plants are known as giant grass.**
- **Some plants of the grass family are used in preparing medicines , packing gifts and making papers**





**Q1. Which plant is used for making tasty dishes?**

**Ans: Bamboo**

**Q2. Bamboo shoots have high nutritional value and are rich in \_\_\_\_\_.**

**Ans: vitamins**

**Q3. Which part of plant in grass family helps to conserve the soil?**

**Ans: roots**

# **HOMework**

- **Draw the pictures of some products made of bamboo and write in five sentences how is bamboo helpful for the environment. Do it in your project record.**

# LEARNING OUTCOME

**The learner will be able to:**

- **how plants from grass family is different.**
- **analyse plants from different plant kingdom.**

**THANKING YOU**  
**ODM EDUCATIONAL GROUP**