

WELCOME TO THE ONLINE CLASS

SESSION NO.: 3

CLASS: 5

SUBJECT: SCIENCE

CHAPTER NUMBER: 10

CHAPTER NAME: OUR NERVOUS SYSTEM

SUB TOPIC: SENSE ORGANS- THE EYE

CHANGING YOUR TOMORROW

LEARNING OBJECTIVE

To enable the learner to:

- **identify the various sense organs found in the human body.**
- **learn the various parts and function of our eye.**
- **understand how to take care of the eyes.**
- **understand what will happen if we lose our eye.**

LET'S RECAP

- The brain needs a continuous supply of blood and _____.
- Watering of mouth is an example of _____ action.
- Reflex actions are controlled by the _____.
- The nerve which carry messages to and from the brain are _____ nerves.

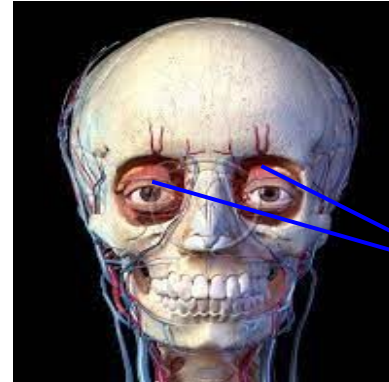
SENSE ORGANS

- The organs which connect us to the outside world are known as sense organs.



THE EYES

- Each eyeball is safely set in a deep bony socket and is further protected by the eyelids and eyelashes.
- These help to keep dust and dirt out of our eyes.



Eye socket

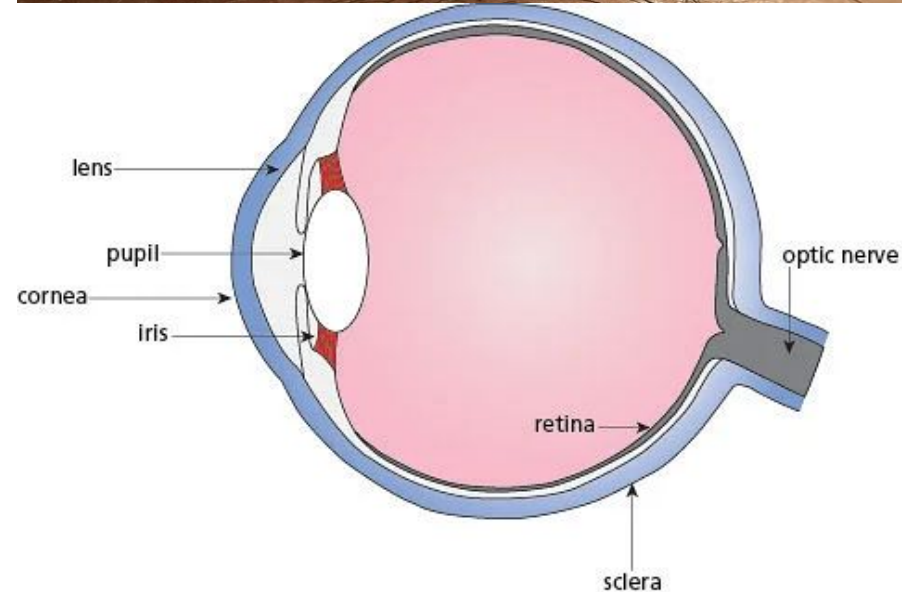
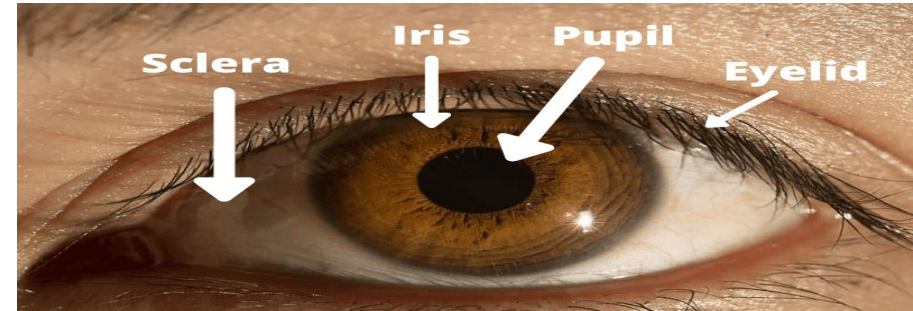


Eyeball



PARTS OF THE EYES

- **Cornea:** The outer bulging part of the eye is called as the cornea.
- **Iris:** It is the coloured part of the eye.
- **Pupil:** It looks like a black spot, is an opening through which light enters the lens.
- **Optic nerve:** The sensory nerve that connects the eye to the brain is the optic nerve.



CARE OF THE EYES

- Wash your eyes regularly with clean water.
- Do not work in dim light or very bright light.
- Let the light fall from the left side of the reading material.
- Do not read in a moving vehicle. This will strain your eyes.



CARE OF THE EYES

- Always sit at least 6 feet away from the television set.
- Do not watch TV or play games on the computer for long periods.
- Do not read while lying down.
- Sit erect and hold the book about a foot away from your eyes.



CARE OF THE EYES

- Never rub your eyes with a dirty towel or dirty hand.
- Do not use any one else towel or handkerchief if you have an eye infection.
- Tell your teacher parents if you cannot read what is written on the blackboard.



SUMMARY

- **The organs which connects to the outside world through our senses are known as the sense organs.**
- **We should take proper care of eyes because it helps us to see the beautiful world.**
- **Eyes has different parts and each part has its own function.**
- **Eyes are one of the most important sense organs.**

READY FOR A
QUIZ ?

1. The coloured part of the eye.

Ans: Iris

2. Nerves that connect the eyes to the brain.

Ans: Optic nerves

3. The organs which connect us to the outside world.

Ans: Sense organs

HOMEWORK

- **Do the oral Q & A of page no. 93.**
- **Do the questions A, B & C in your notebook.**

LEARNING OUTCOME

The learner will be able to:

- **identify the various sense organs found in the human body.**
- **learn the various parts and function of our eye.**
- **understand how to take care of the eyes.**
- **understand what will happen if we lose our eye.**

THANKING YOU
ODM EDUCATIONAL GROUP