

WELCOME TO THE ONLINE CLASS

SESSION NO.: 8

CLASS: 5

SUBJECT: SCIENCE

CHAPTER NUMBER: 8

CHAPTER NAME: ANIMALS EVERYWHERE

SUB TOPIC: LONG Q/A ANSWER THE FOLLOWING QUESTIONS

CHANGING YOUR TOMORROW

LEARNING OBJECTIVE

To enable the learner to:

- Make them write the questions and answers.

A. Tick the correct answer.

1. A frog is an amphibian because it can live
 - a. only on land.
 - b. only in water
 - c. on land and in water.
 - d. none of these
2. Whales and dolphins are classified as
 - a. Fishes
 - b. Reptiles
 - c. Mammals
 - d. Amphibians
3. This animal has scales on its body.
 - a. Fish
 - b. Deer
 - c. Zebra
 - d. Ostrich
4. This bird cannot fly.
 - a. Owl
 - b. duck
 - c. Arctic tern
 - d. Ostrich

A. Tick the correct answer.

5. Locusts are harmful migratory
- a. Birds
 - b. Rodents
 - c. Fish
 - d. Insects**
6. The water boatman uses its legs as
- a. Antennae
 - b. Radars
 - c. Fans
 - d. Oars**

**B. Change the underlined words to make correct statements.
Rewrite the correct statements in your notebook.**

1. Animals get their supply of oxygen from food.

Ans: Animals get their supply of oxygen from their surrounding.

2. The blood of an insect does not contain the carbon dioxide carrier called haemoglobin.

Ans: The blood of an insect does not contain the oxygen carrier called haemoglobin.

3. The mass movement of animals from one place to another is known as hibernation.

Ans: The mass movement of animals from one place to another is known as migration.

4. Gills are special organs with which all mammals breathe.

Ans: Lungs are special organs with which all mammals breathe.

5. Mammals like ants and cockroaches crawl on their legs.

Ans: Insects like ants and cockroaches crawl on their legs.

C. Write short answers.

3. What is the difference in the way a tadpole and a frog breathe?

Ans: A tadpole breathes through its gills whereas an adult frog breathes through its lungs on land and through its moist skin in water.

4. What are the characteristic features of teeth in herbivores?

Ans: Herbivores have sharp front teeth for biting and strong broad teeth for chewing their food.

5. Why do some animals migrate?

Ans: Animals migrate:

- a. to escape harsh weather
- b. to search for food
- c. to reach their breeding grounds.

D. Answer the following questions.

1. Name of few animals found around you. Write one characteristic feature of each animal.

Ans: Few animals found around us and one of its characteristics are as follows:

- a. Fish: It breathes through its gills.
- b. Cockroach: It breathes through its air holes on its body called spiracles.
- c. Rabbit: They have small and sharp front teeth which helps to gnaw the seeds and fruits.
- d. Lizards: They have a dry scaly skin and lay soft shelled eggs on land.
- e. Frog: It lives both on land and in water.

2. How is the breathing process of an insect different from that of a fish?

Ans: Insects breathe through air holes on their body called spiracles which are connected to air tubes that helps in exchange of gases whereas a fish have gills that helps it to breathe. When water flows over the gills an exchange of gases takes place.

D. Answer the following questions.

3. What special features help water animals to move?

Ans: Different water animals have different features to move. some of the special features of some animals are mentioned below:

- Fish have fins for swimming in water.
- Turtles have four paddle-like limbs to push water back and to swim.
- Penguins use their two forelimbs as flippers to push water and to swim.
- Frogs have webbed feet to swim in water.

4. How do insects move?

Ans:Some insects move with the help of their six legs. The legs help them to crawl and move. Whereas some other insects have one or two pairs of wings that helped them to fly.

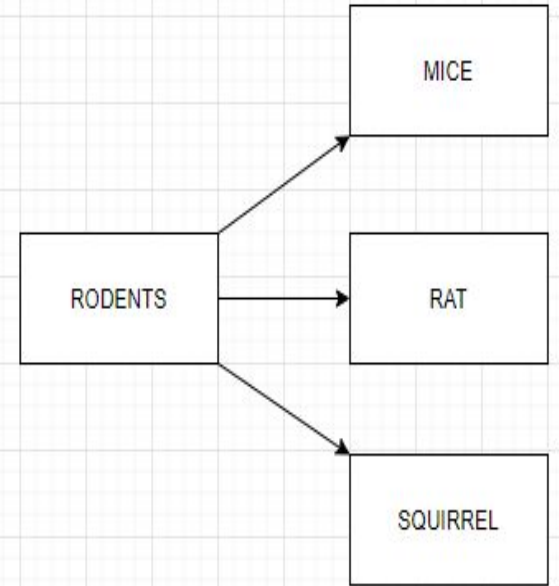
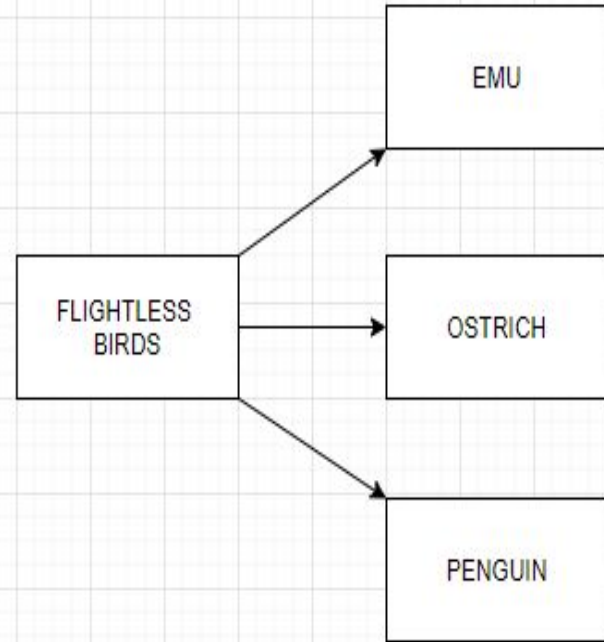
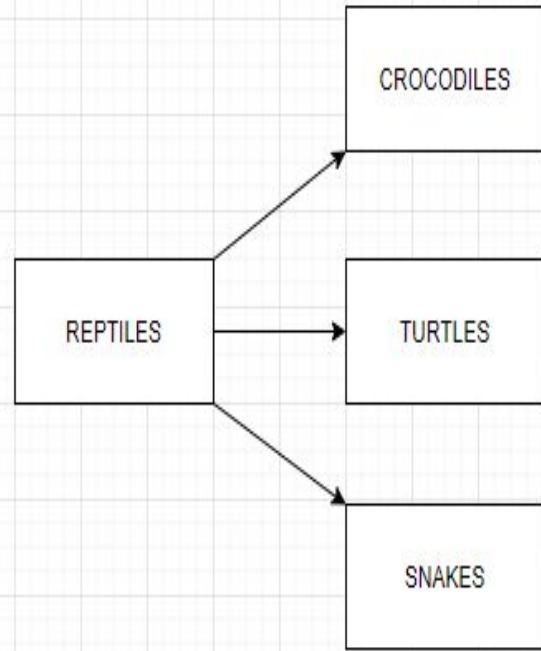
5. Snakes are reptiles without any legs. How do they move?

Ans: Snakes are reptiles without any legs. Snakes move with the help of scales or plates on the underside of their body which are attached to their ribs. They have strong muscles and a flexible backbone which also help them to move forward.

E. Write in the correct columns the names of the animals given in the box.

Lungs	Gills	Spiracles	Body surfaces
Camel Pigeon Monkey Crocodile Elephant Crow Bat Man Snake Whale Woodpecker	Fish Tadpole Prawn	Grasshopper Butterfly	Amoeba Paramecium

F.Fill in the names in the boxes.



HOMework

Identify and name the national park, wildlife sanctuary or bird sanctuary given in page no. 81.

LEARNING OUTCOME

The learner will be able to:

- **Make them write the questions and answers.**

THANKING YOU
ODM EDUCATIONAL GROUP