

WELCOME TO THE ONLINE CLASS

SESSION NO.: 2

CLASS: 5

SUBJECT: SCIENCE

CHAPTER NUMBER: 9

CHAPTER NAME: OUR SKELETAL SYSTEM

**SUB TOPIC: THE SKELETON- THE SKULL, THE BACKBONE OR
SPINE**

CHANGING YOUR TOMORROW

LEARNING OBJECTIVE

To enable the learner to:

- **know about the human skeleton.**
- **recognize the different kinds of bones found in our skeleton**
- **learn about the function of each bone.**
- **know the importance of the skeleton.**

LET'S RECAP

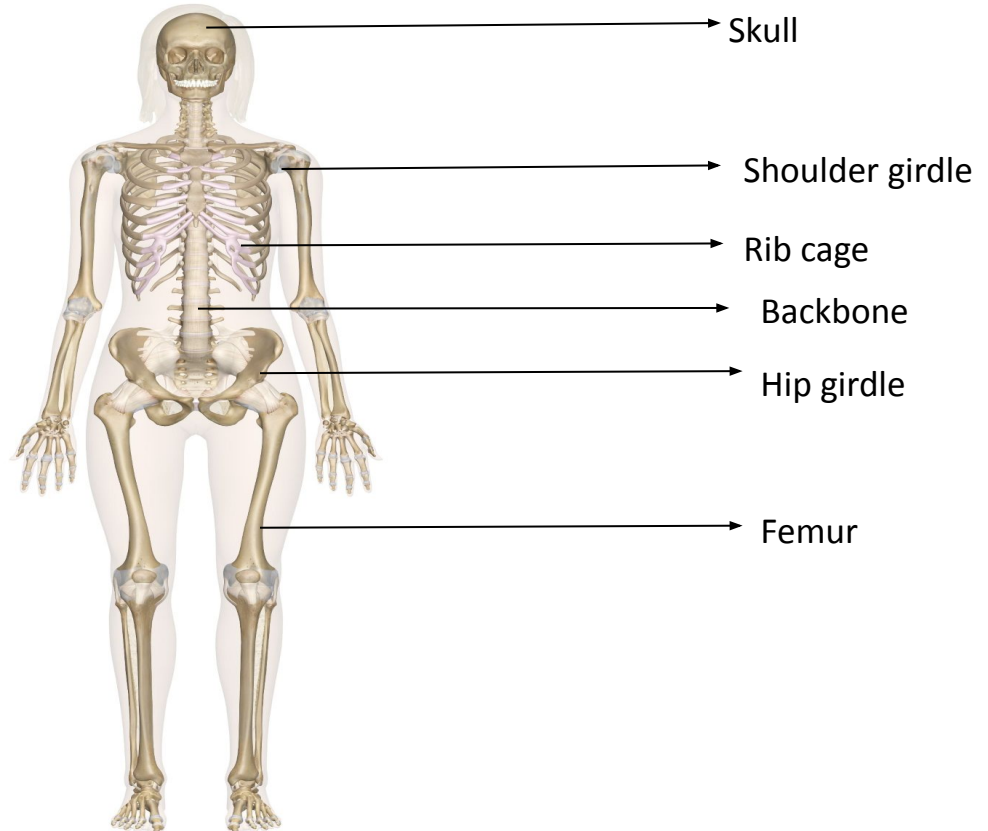
- Name some internal organs.
- List some organ systems of our body.

LET'S PLAY

<https://www.jigsawplanet.com/?rc=play&pid=14758a4d1e8d>

THE SKELETON

- The human skeleton is a framework of bones which encloses and protects all the internal organs and gives support, strength and shape to the body.
- There are 206 bones in an adult.



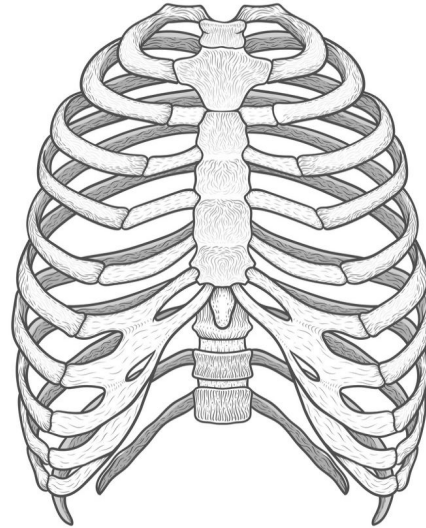
DIFFERENT PARTS OF THE SKELETON



SKULL



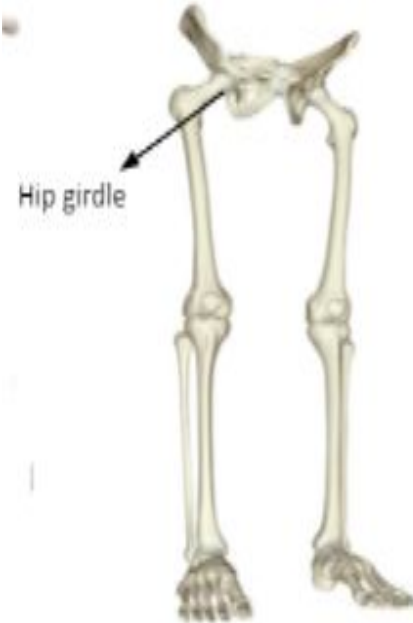
**SPINE/
BACKBONE**



RIB CAGE



FORELIMBS



HINDLIMBS

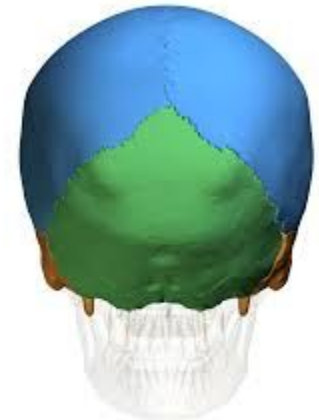
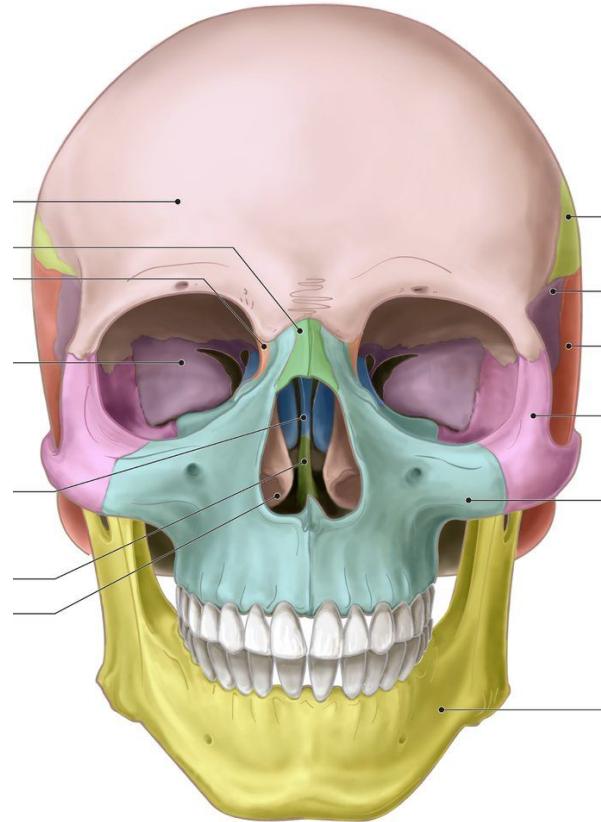
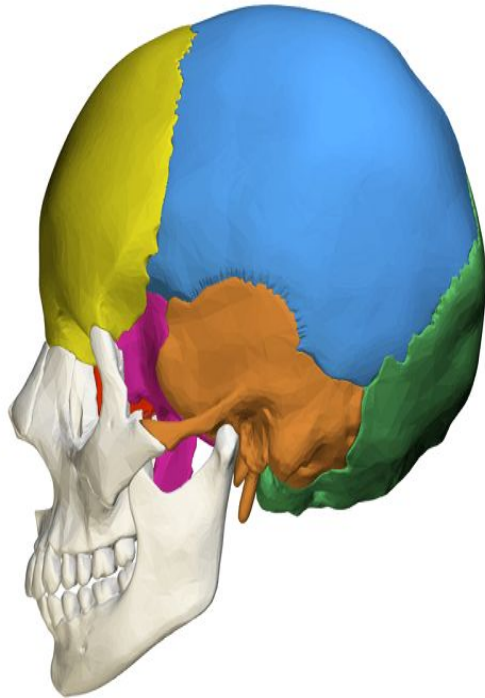
LIMBS

THE SKULL

- It is made up of 22 bones.
- Eight flat bones, interlock together, enclose the delicate brain inside it.
- There are 14 bones in the facial regions and among them only the lower jaw is movable which enables us to eat and talk.



THE SKULL



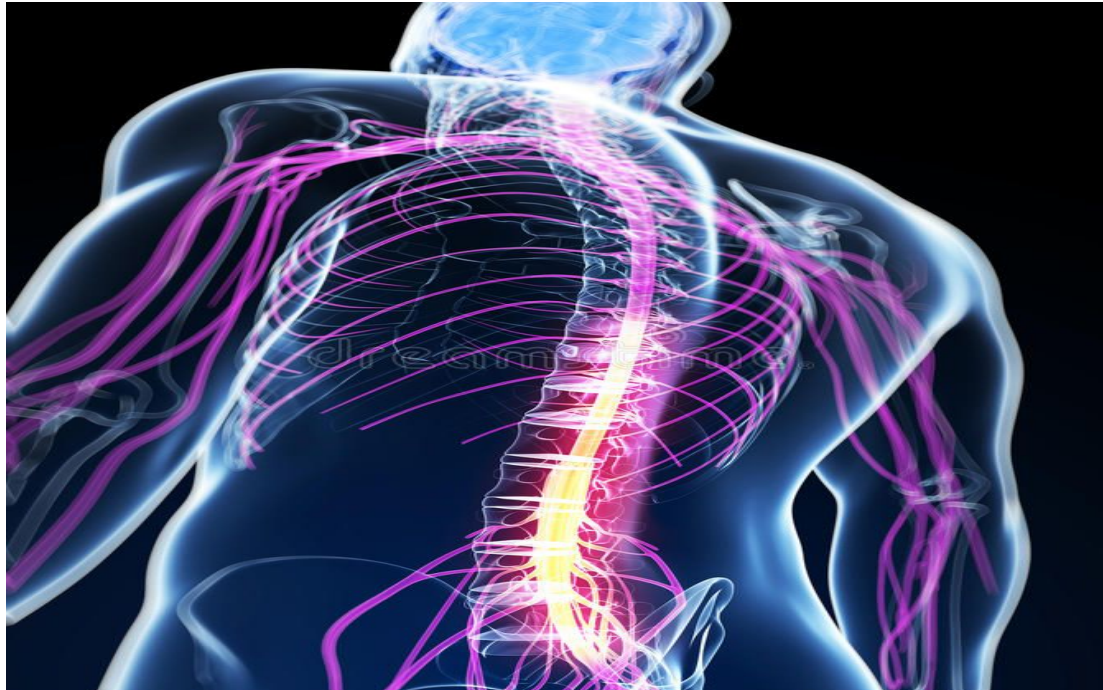
THE BACKBONE OR SPINE

- The skull is attached to the backbone which forms the main axis of the skeleton.
- It is made up of 33 small bones called vertebrae which forms a strong column called the vertebral column.



THE BACKBONE OR SPINE

- The vertebral column protects the delicate spinal cord.



SUMMARY

- **The human skeleton is a framework of bones which encloses and protects all the internal organs and gives support, strength and shape to the body.**
- **There are 206 bones in an adult.**
- **The skeleton consists of the skull, the spine, the ribcage and the limbs.**
- **The skull is made up of 22 bones and only lower jaw is movable.**
- **It is made up of 33 small bones called vertebrae which forms a strong column called the vertebral column and protects the spinal cord.**

READY FOR A
QUIZ ?

1. A framework of bones that protects all the internal organs.

Ans: Skeleton

2. The skull is made up of _____
bones.

Ans: 22

3. Which part of the facial region is movable? How it helps us?

Ans: The lower jaw of the facial region is movable. It helps us to eat and talk.

4. Spine is made up of _____ small bones called _____ which form a strong column called the _____ column.

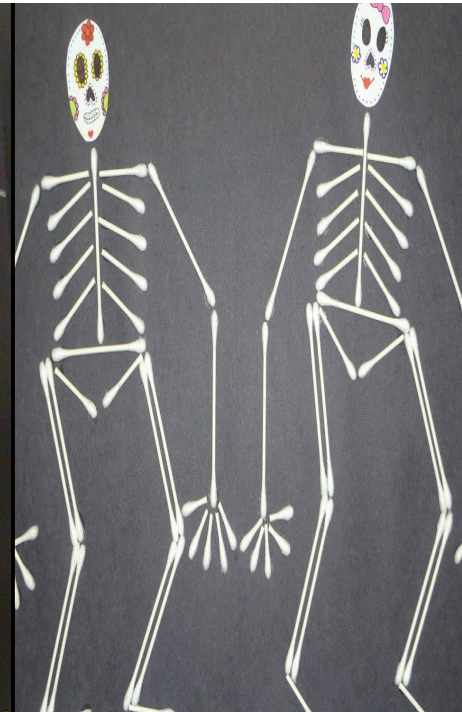
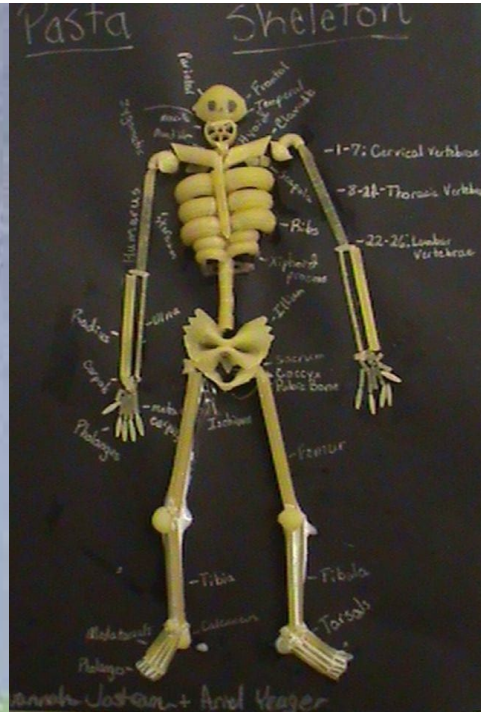
Ans: 33, vertebrae, vertebral

HOMEWORK

Do the questions A, B & C in your notebook.

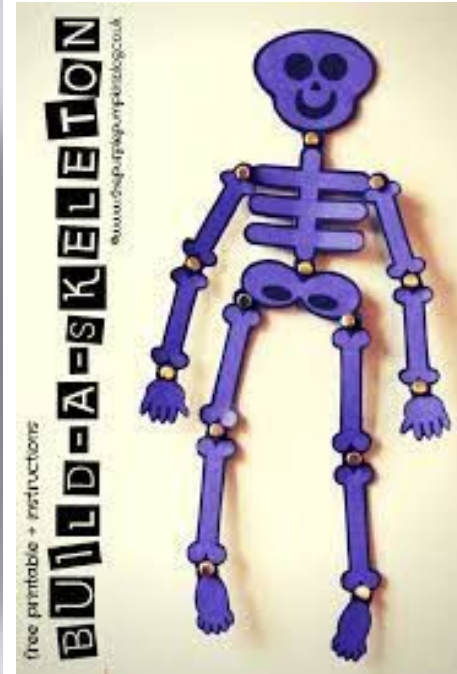
SCIENCE INTERACTIVE ACTIVITY

Make a model of the human skeletal system.



SCIENCE INTERACTIVE ACTIVITY

Make a model of the human skeletal system.



LEARNING OUTCOME

The learner will be able to:

- **know about the human skeleton.**
- **recognize the different kinds of bones found in our skeleton**
- **learn about the function of each bone.**
- **know the importance of the skeleton.**

THANKING YOU
ODM EDUCATIONAL GROUP