

## Chapter- 14

# How the Wheel was Invented

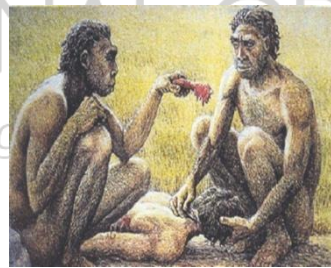
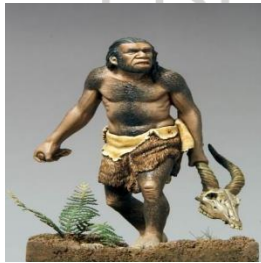
## STUDY NOTES

### Let's Learn:

- There was a time when there were no lights, fans, telephones, computers, televisions or refrigerators.
- There were also no roads, scooters, motor-cars or buses.
- People in the past lived differently from the way we live now.
- Thousands of years ago, the world was a different place.
- At that time, human beings lived in the jungles.
- They did not have the basic things for their living.

### **Where did early people live and what did they wear and eat? :**

- Early people lived in forests and caves.
- They used animal skins, leaves and grass to cover their bodies.
- They ate roots, wild fruits and the raw meat of animals.
- They ate the meat without cooking it because they did not know about fire and its uses.



### **Hunting of Animals:**

- When early people hunted or killed small animals like the wild dog, wild deer, they carried the animals on their backs to their homes.
- But when they hunted large animals like the bison or the elephant, it was not easy to drag or pull these animals along the ground over long distances.



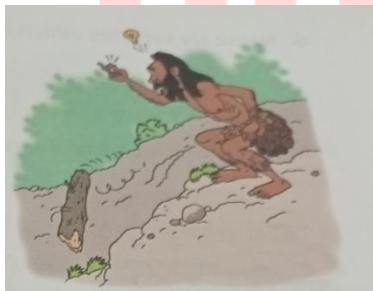
dreamstime.com © 16881068 © ClassicVector



shutterstock.com · 1124794199

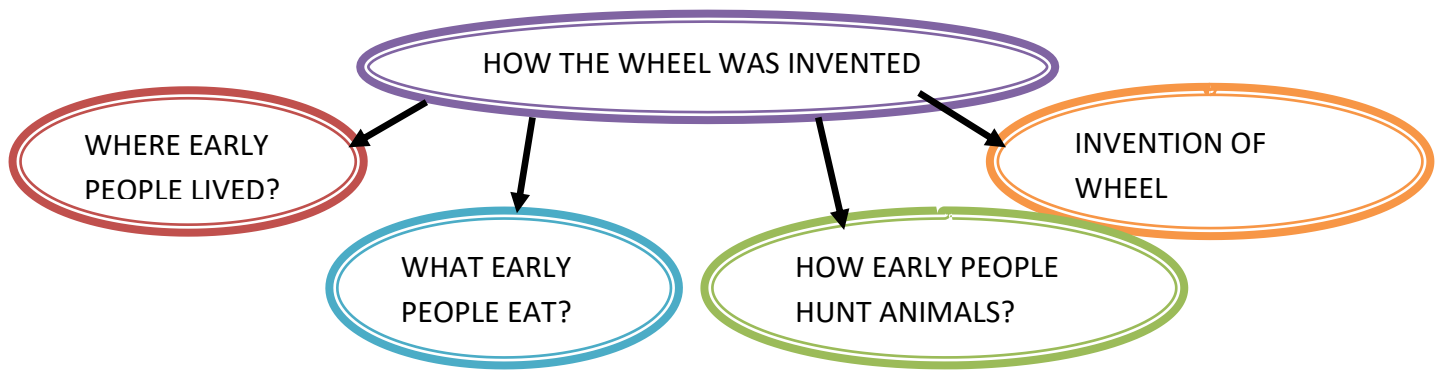
**Invention of Wheel:**

- With time, early people realised that they could move heavy things easily if they put them on logs and rolled them along.
- The round logs turned easily and helped carry the weight.
- Then someone had the wonderful idea to cut the log into pieces. Each of the pieces became a wheel.
- And the wheel was invented.



*Changing your Tomorrow*

**Memory Map:**



**Let's Know More:****Q1. Fill in the blanks.**

- a) Early human ate \_\_\_\_\_.
- b) They lived in the \_\_\_\_\_.
- c) Fire helped early people to cook \_\_\_\_\_.
- d) Early people learnt to make the \_\_\_\_\_.

**Let's Do:****Q2. Name six vehicles which have wheels.**

- a) \_\_\_\_\_
- b) \_\_\_\_\_
- c) \_\_\_\_\_
- d) \_\_\_\_\_
- e) \_\_\_\_\_
- f) \_\_\_\_\_

**Q3. Match the vehicles to the number of wheels they have.**

3 wheels



6 wheels



4 wheels



2 wheels

**Q4. Answer the following questions.**

- a) How did the early humans bring home the small animals they hunted?
- b) How did the early humans bring home the large animals that they hunted?
- c) What could have led to the invention of the wheel?

**Teacher's Note:**

- Draw and decorate your favourite vehicle which has wheels in the scrapbook.

**Improve Your G.K.:**

- The Stone Age began around 2.5 million years ago.
- There were 4 different types of humans in the Stone Age.
- Humans learnt to farm during the Stone Age.

**Answer Key:-**

Q1.a) roots & fruits

- b) forest
- c) meat
- d) wheel

Q2.a) Bicycle

- b) Motor bike
- c) Car
- d) Truck
- e) Scooter
- f) Scooty

Q3.a) 3 wheels- Auto-rickshaw

- b) 6 wheels- Truck
- c) 4 Wheels- Car
- d) 2 wheels- Scooty

Q4.a) The early humans carried the small animals after hunting on their back and brought it to their home.

b) It is very difficult to drag large animals for early humans. So with the passing of time, they put the large animals on a log and rolled them along.

c) With time, early people realised that they could move heavy things easily with the help of wheel which led to the invention of the wheel.