

BEEHIVE

STD-IX

SUBJECT- LITERATURE

CHAPTER - 1

TOPIC- THE ROAD NOT TAKEN

PERIOD-1

CHANGING YOUR TOMORROW

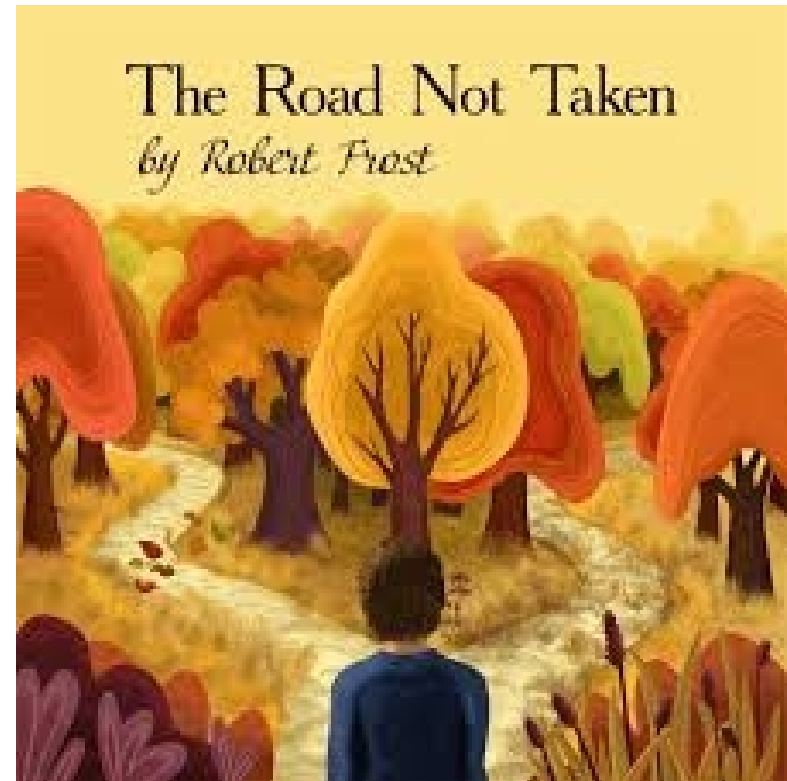
Website: www.odmegroup.org

Email: info@odmps.org

Toll Free: **1800 120 2316**

Sishu Vihar, Infocity Road, Patia, Bhubaneswar- 751024

THE ROAD NOT TAKEN



ROBERT FROST

EXPECTED LEARNING OUTCOMES:

GENERAL OBJECTIVES

- Understanding the concept
- Being acquainted with prose and poet's biography
- Understanding the idea
- Appreciate the language of the prose
- Developing LSRW Skills

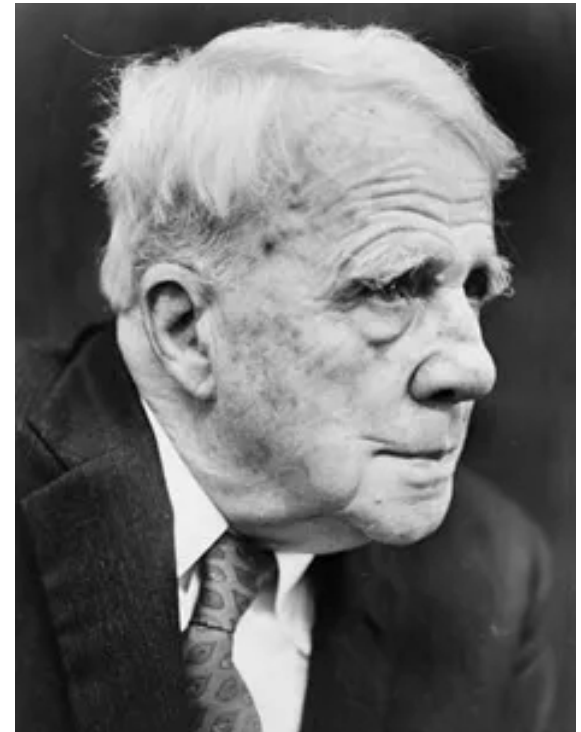
SPECIFIC OBJECTIVES/ EXTENDED OBJECTIVES

- Understanding the concept
- Being acquainted with prose and poet's biography
- Understanding the idea
- Appreciate the language of the prose
- Developing LSRW Skills



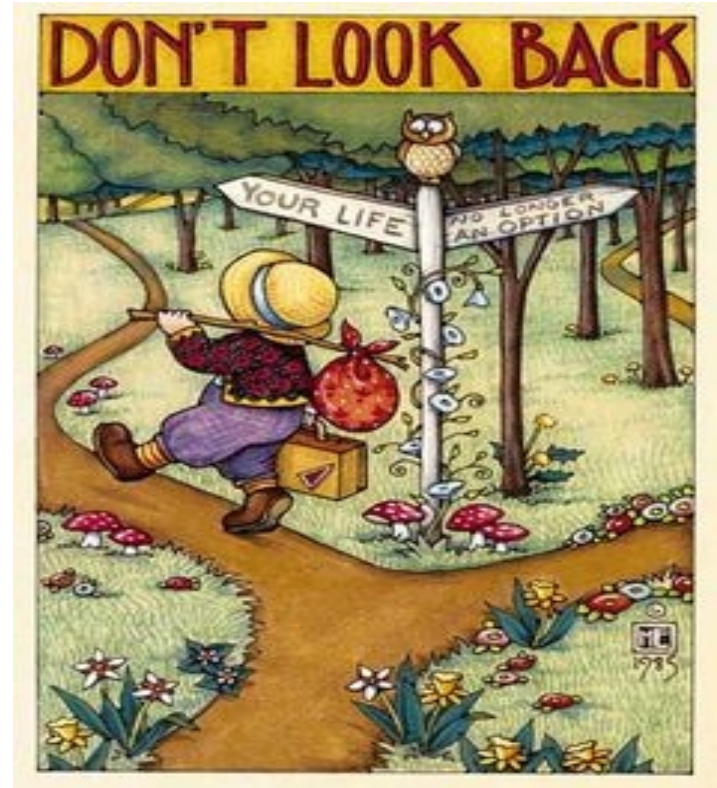
ROBERT FROST

- Robert Frost was born on March 26th, 1874. One of the most celebrated poets in America, Robert Frost was an author of searching and often dark meditations on universal themes and a quintessentially modern poet in his adherence to language as it is actually spoken, in the psychological complexity of his portraits, and in the degree to which his work is infused with layers of ambiguity and irony. Robert Frost's work was highly associated with rural life in New England. The poet often uses the New England setting to explore complicated philosophical and social themes. As a well-known and often-quoted poet, Robert Frost was highly honored during his presence on earth, receiving 4 Pulitzer Prizes.



THEME

- The Road Not Taken is a poem that describes the dilemma of a person standing at a road with diversion.
- This diversion symbolizes real-life situations. Sometimes, in life too there come times when we have to take tough decisions.
- We could not decide what is right or wrong for us.



STANZA 1

- This poem signifies a situation where the poet was walking down a road that had a diversion.
- He had to choose between the two paths. Since he was a single person, he could choose only one of the two paths.
- The wood was yellow which represents a world full of people who have been residing for many years.



STANZA 1

- The poet kept standing at that fork and looked at the paths very carefully.
- He looked as far as he could. Before moving forward on one path, he wants to understand how it was.
- Was it suitable for him to walk on it or not? He was able to see the path till from where it got curved.



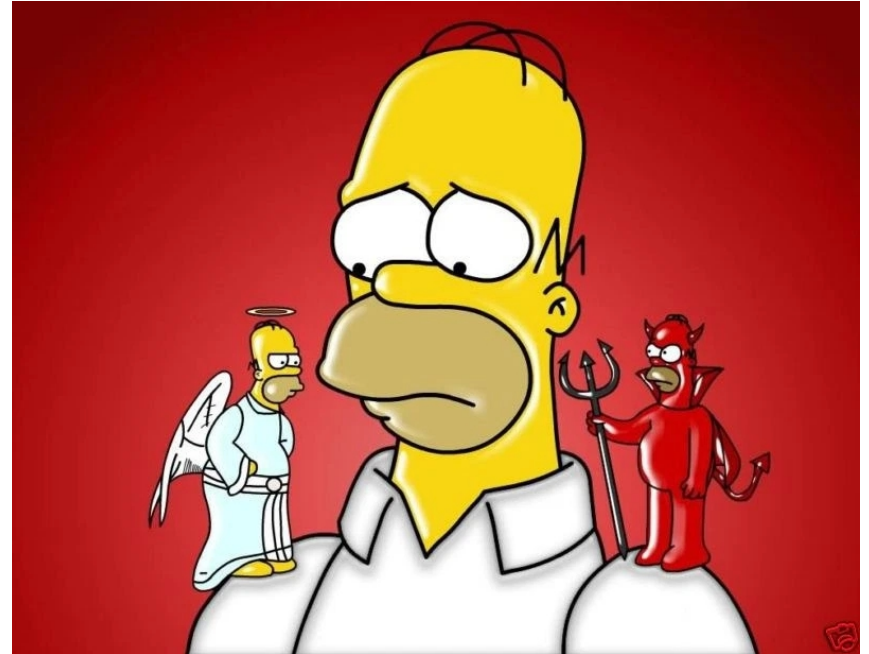
STANZA 1

- However, afterward it was covered with trees and thus was hidden.
- He wanted to understand the advantages and disadvantages of the paths.
- The same happens in life too. We have to make decisions thinking about its good and bad consequences in the future.



STANZA 2

- The poet looked at one path for a long time to decide whether it's good or not for him.
- Then he takes the alternative path as he feels that both paths are equally good.
- He feels that the path he chose was better for him.
- The path was grassy which depicted that it was walked over by fewer people and also, it was 'wanted wear'.



VOCABULARY

- diverged: separated and took a different direction
- yellow wood: a forest with decomposing leaves
- undergrowth: dense growth of plants and bushes means the forest)
- fair: As good as the other one,
- claim: Better option
- grassy: unused
- wanted wear: had not been used

HOMEWORK

Find out 5 synonyms and antonyms from the poem and practice vocabulary

THANK YOU
ODM EDUCATIONAL GROUP

