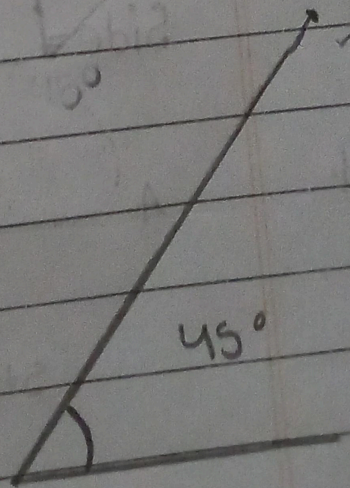
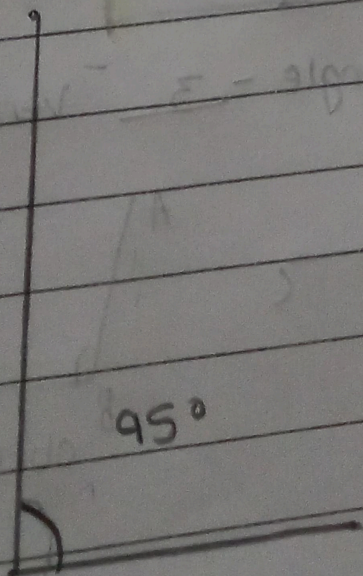


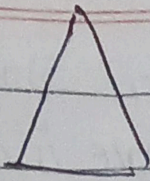
- A 1. An angle measuring 180° is called a straight angle.
2. The common starting point of an angle is called the starting of the angle.
3. A Rightangle angle measures 90° .
4. To measure an angle in degrees we use a protractor.
5. A triangle whose all side are equal is called a Equilateral triangle.
- B 6. A line segment has fixed both length.
7. Which of the following represent a line?
axis of earth
8. A Point has no length, breadth or thickness.
9. Number 2 is symmetrical.

C 10. Draw the following

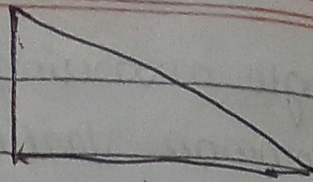
a)



11.



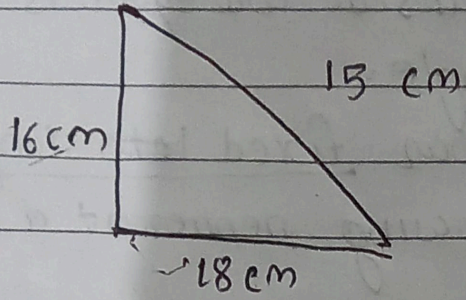
Equilateral triangle



Scalene triangle

12.

Find the area of the triangle



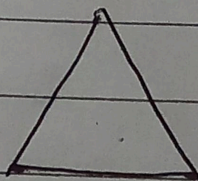
Base of triangle = 18 cm

Height of triangle = 16 cm

$$\frac{1}{2} \times 18 \times 16 = 144 \text{ cm}$$

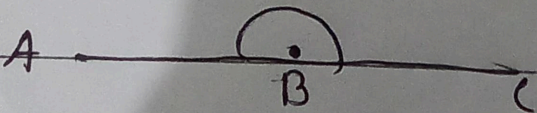
13.

Name the sides, angles and vertices of the given triangle.

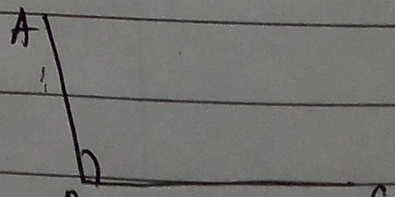


Side = 3 Angle = 3 vertices 3

14.



straight



obtuse angle