

WORKSHEET

I A. 1. I go to school at 7 am in the morning

2. I do my homework at 7 pm

B 1. Midday/noon - 4 pm

2. 10 am - 2 pm

II A.



Half past 8

B - 1. 9 pm - $12 + 9 = 21:00$

2. 6 pm - $12 + 6 = 18:00$

C. 1. $18:00 - 12 = 6$ pm

2. $21:00 - 12 = 9$ pm

1. A. 18 days = 1 day = 24 hours,

$$18 \text{ days} = 24 \times 18 \text{ hours} = 432 \text{ hours}$$

2. 11 days, 20 hours = 1 day = 24 hours

$$11 \text{ days} = 24 \times 11 \text{ hours} = 264 \text{ hours}$$

11 days and 20 hours,

$$264 \text{ hours} + 20 \text{ hours} = 284 \text{ hours}$$

B. 1 8 hours = 1 hour = 60 mins,

$$8 \text{ hrs} = 60 \times 8 \text{ mins} = 480 \text{ mins}$$

2. 20 hrs 30 mins = 1 hr = 60 mins,

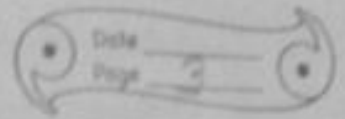
$$20 \text{ hrs} = 60 \times 20 \text{ mins} = 1200 \text{ mins}$$

20 hrs and 30 mins =

$$1200 \text{ mins} + 30 \text{ mins} = 1230 \text{ mins}$$

3. 16 hrs 10 mins = 1 hr = 60 mins,

ANWESHA SAHOO



$$16 \text{ hrs} = 60 \times 16 \text{ mins} = 96 \text{ mins}$$

$$16 \text{ hrs and } 10 \text{ mins} = 96 \text{ mins} + 10 \text{ mins}$$

$$96 \text{ mins} + 10 \text{ mins} = 106 \text{ mins}$$