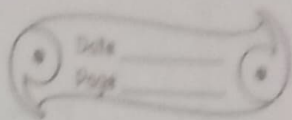


Geometry Worksheet



A. Fill in the blanks.

① An angle measuring 180° is called a Straight angle.

2. The common starting point of an angle is called the vertex of the angle.
or point

3. A right angle ~~both~~ measures 90° .

4. To measure an angle in degrees, we use a protractor.

5. A ~~triangle~~ triangle whose sides are equal is called a equilateral triangle.

B. Choose the correct answer.

6. A line segment has two endpoints.

Ans two end points

7. Which of the following represents a line?

Ans axis of ^EEarth

8. A ~~point~~ ^{point} has no length, breadth or thickness.

Ans. ~~point~~ point

9. ~~Identify~~ Identify which of the following is symmetrical?

Ans

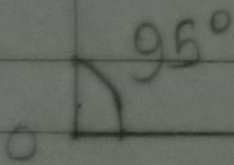
ii)



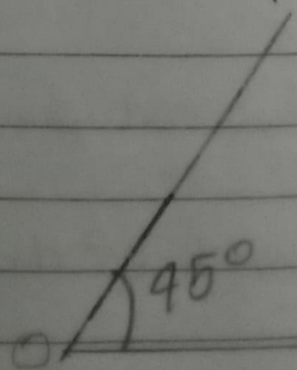
The kite is symmetrical.

10) Draw the following angles using a protractor.

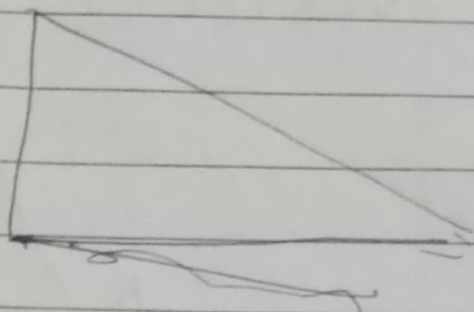
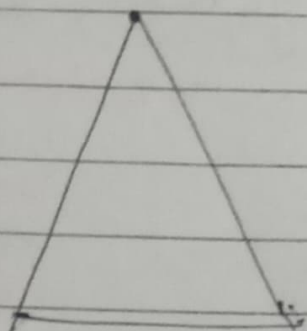
(a) 95°
A



(b) 45°
P



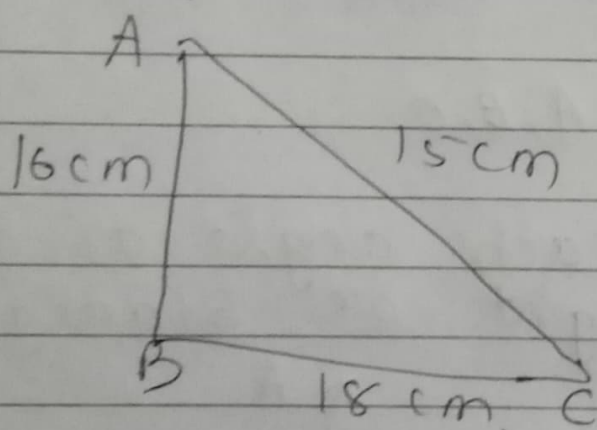
11. Why type of triangles are these?



Equilateral

Scalene

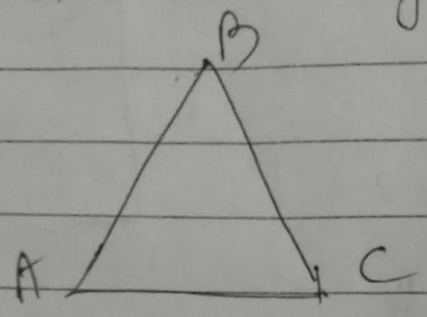
12) Find the area of the triangle



Ans. ~~Area~~ : Formula of area of a triangle = $\frac{1}{2} \times B \times H$

$$= \frac{1}{2} \times 18 \text{ cm} \times 16 \text{ cm} = 144 \text{ cm}^2 \quad (\text{Ans.})$$

13. Name the sides, angles and vertices of the given triangle.

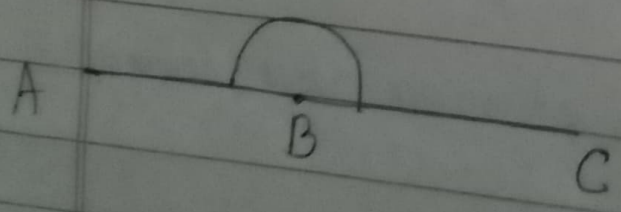


Sides = AB, BC, CA

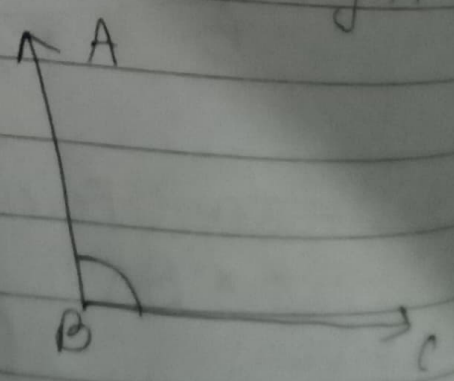
Angles = $\angle BAC$, $\angle ACB$, $\angle ABC$

Vertices = A, B, C

14. Classify each angle as acute, obtuse, right or straight.



Straight angle



obtuse angle