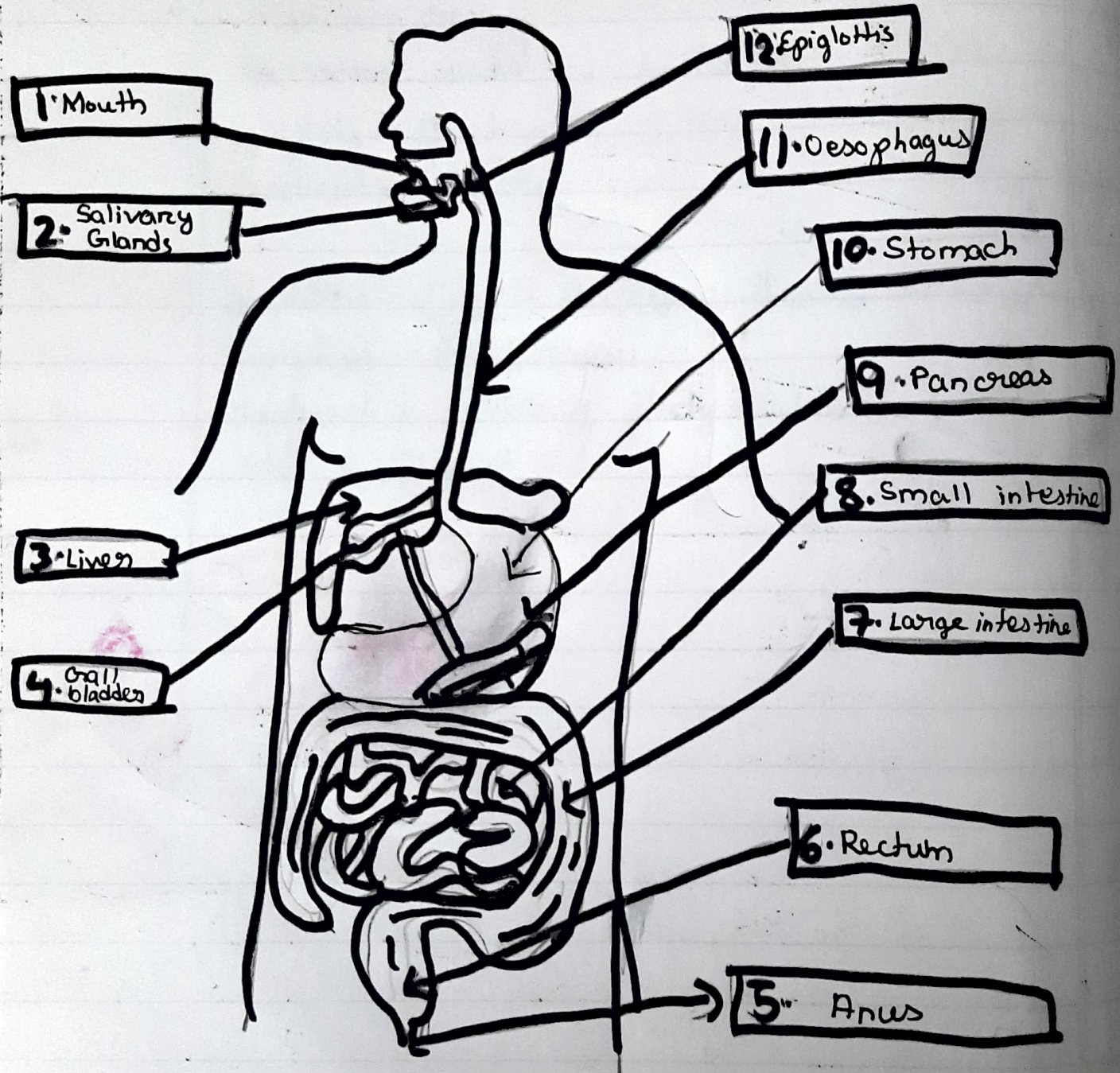


Homework

Date-22/11/2022

Lesson - Digestive System

Structure of the Digestive System



Structure	Function in digestion
Mouth	where food enters the body, known as ingestion
Salivary glands	Produce saliva which lubricates the food and contains amylase for starch digestion.
Epiglottis	Prevents swallowed food from entering the lungs
oesophagus	Food travels down here by peristalsis to the stomach
Stomach	Food is mixed with acid and enzymes that digest protein in the food.
Small intestine	Food is further digested into the finest part and then absorbed into the blood in the later part.
Large intestine	Reabsorption of water, and water-soluble vitamins and minerals; faeces are formed.
rectum	Storage of faeces before egestion.
anus	where faeces are expelled from the body
Liver	Produce Bile, which is involved in lipid digestion (emulsification)
Gall bladder	Stores bile, which is involved in lipid digestion (emulsification)
pancreas	Produces digestive enzymes and alkali which are secreted into the small intestine.