

CHAPTER - 15 .

GEOMETRY . WORKSHEET .

NO. A. Fill in the blanks :

1. An angle measuring  $180^\circ$  is called a straight angle.
2. The common starting point of an angle is called the vertex.
3. A Right angle measures  $90^\circ$ .
4. To measure an angle in degrees, we use a protractor.

5. A triangle whose all sides are equal is called a Equilateral triangle.

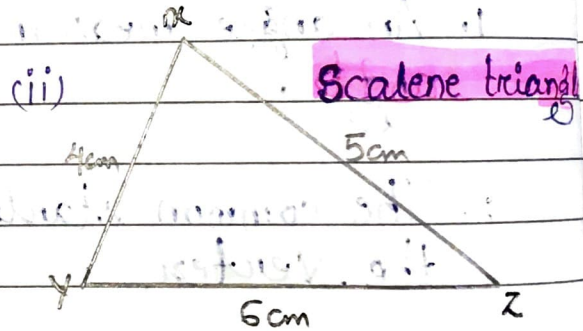
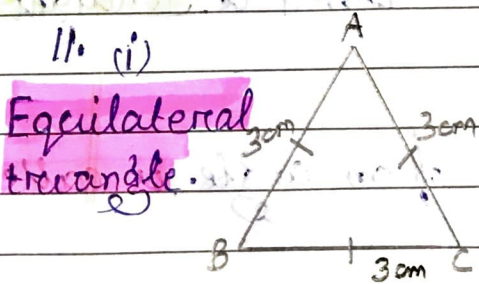
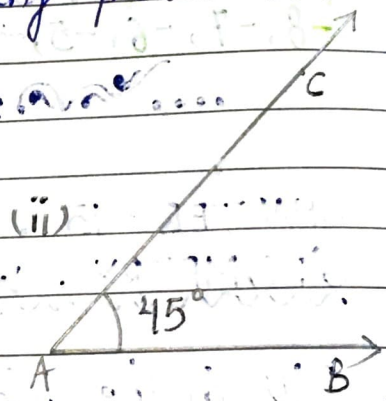
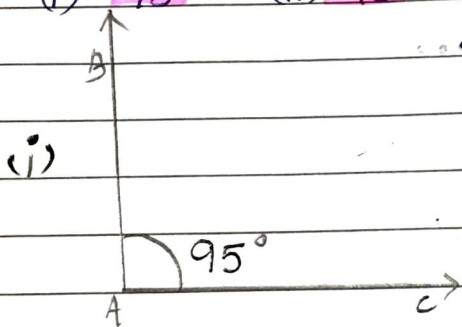
B. CHOOSE THE CORRECT ANSWER:

6. A line segment has two end point.
7. Which of the following represents a line?  
axis of earth.
8. A line has no length, breadth or thickness.
9. (ii) picture is a symmetrical picture.

C. Do as directed:

10. Draw the following angle using protractor:

- (i) 95° (ii) 45°



19. Find the area of the triangle:

AB = 16 cm

BC = 18 cm

CA = 15 cm

Area of a right triangle.

$= \frac{1}{2} \times \text{Base} \times \text{Height}$

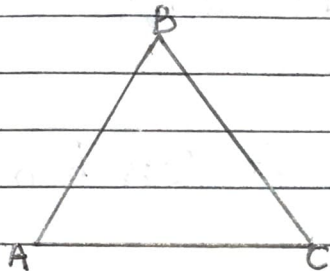
$\Rightarrow \frac{1}{2} \times 18 \text{ cm} \times 16 \text{ cm}$

$\Rightarrow \frac{1}{2} \times 288$

$\Rightarrow 144 \text{ Square cm}$

∴ Hence the area of the triangle is **144 sqcm**.

13.



Sides = AB, BC, CA

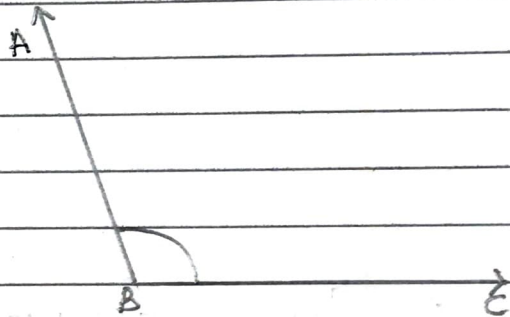
Angles =  $\angle BAC$ ,  $\angle ACB$ ,  $\angle CBA$ .

Vertices = A, B, C.

14.



**Straight angle.**



**Obtuse angle.**