

H.W
7.1.22

CH-13 THE EARTH AND THE SKY

Page No. 2
Date:

WORKSHEET

Q1. Choose the correct :

- a) deserts are hot and dry places. (cold / hot)
- b) Our earth is round like an orange (orange / apple)
- c) we cannot see air but we can feel it. (water / air)
- d) During day, we can see the sun (sun / moon)
- e) At night, the sky becomes dark. (dark / light)

Q4. circle the odd one out :

- a. land water (moon)
- b. sun (plain) clouds
- c. lake river (mountain)

Teacher's Signature

Q2. Match the following.

A	B
water	night
moon	Lake
flatland	Rainy day
Deserts	plaid
Rainbow	Hot and dry

Q3. write "yes" or "no".

- a. The earth is made of land and water. yes
- b. A desert is a place with lots of water. NO
- c. We breathe in air. yes
- d. We share the earth with other living things. yes
- e. We can see the sun at night. NO

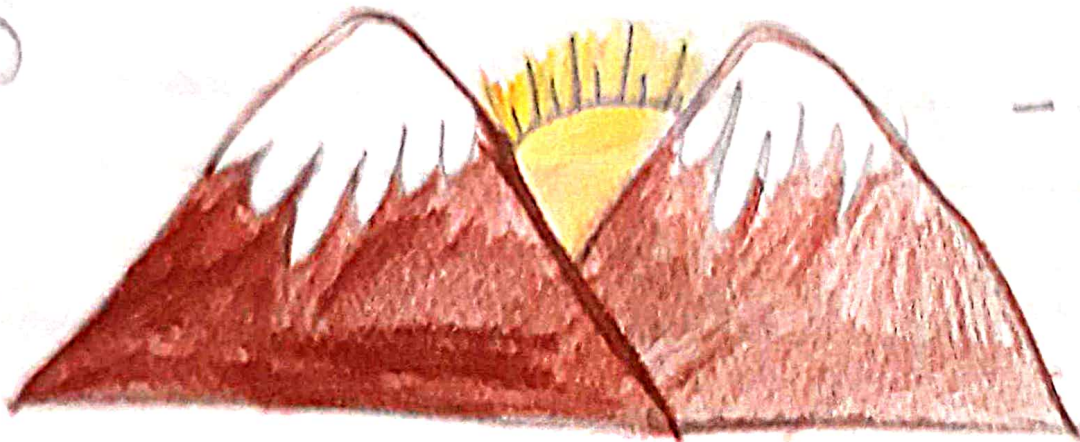
Teacher's Signature

1

Q5. Identify the pictures and write:



Rain bow



mountain