

Chapter - 13GeometryWorksheet

- A) 1) Line segment has two end points.
- 2) Line has no end points.
- 3) The lines or line segments which cross each other at any point are known as Intersecting lines.
- 4) The length of the boundary of a circle is known as its circumference.
- 5)  $\text{Diameter} = 2 \times \text{Radius}$
- B) 6)  $\text{Radius} = \frac{\text{Diameter}}{2}$
- 7) Diameter is twice the radius of a circle.
- 8) The lines which do not meet at any point no matter in whatever direction we continue, are known as Parallel lines.
- 9) A line has no end points.
- 10)  $D = 2 \times R$

c) Answer the following questions

11) Diameter = 44 cm

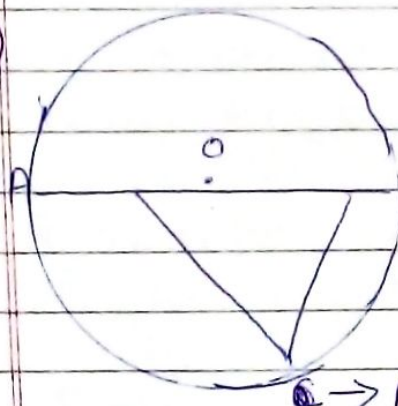
$$\text{Radius} = \text{Diameter} \div 2$$

$$R = D \div 2$$

$$\begin{array}{r} 22 \\ 2 \overline{) 44} \\ \underline{4} \phantom{0} \\ 04 \\ \underline{4} \\ 0 \end{array}$$

So radius is 22 cm.

12)



B → Diameter

$\overleftrightarrow{AB}$  → Diameter

C → Radius

$\overleftrightarrow{AO}$  → Radius

$\overleftrightarrow{OB}$  → Radius

3 circular objects that I see in my daily life are Sun, wheel, CD

13) 8 cm

14) Radius = 13 cm

$$\begin{array}{r} 13 \\ \times 2 \\ \hline 26 \end{array}$$

Diameter = Radius  $\times$  2

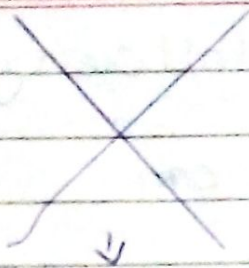
$$D = R \times 2$$

∴ So Diameter is 26 cm

15)



↓  
Parallel  
line



↓  
Intersecting  
line