

SUBTRACTION

WORKSHEET

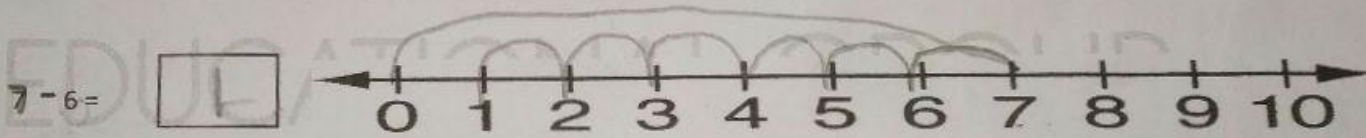
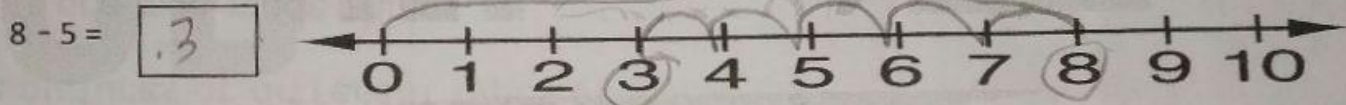
Q1. Fill in the blanks.

| | | | | |
|---|------------|----|--------------|-------|
| 7 | difference | 70 | Forty - five | minus |
|---|------------|----|--------------|-------|

- The answer of subtraction is known as difference.
- The sign used for subtraction is called minus.
- The difference of 14 and 7 is 7.
- Take away 10 from 80 gives 70.
- 5 less than 50 is Forty five.

Q2. Do as directed.

a. Subtract by counting backward on a number line.



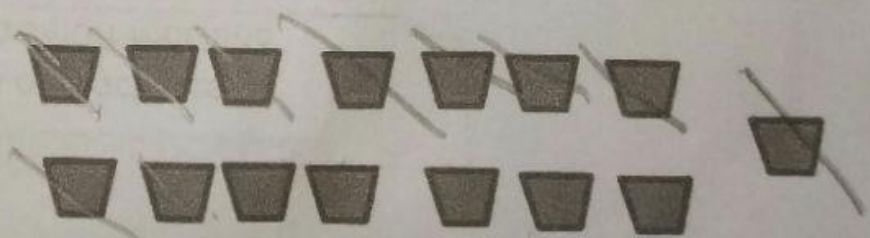
b. Subtract the following. (without borrowing)

| | | |
|-------|---|----|
| (-) | T | O |
| | 4 | 8 |
| | 2 | 7 |
| | 2 | 14 |

| | | |
|-------|---|---|
| (-) | T | O |
| | 9 | 6 |
| | 9 | 2 |
| | 0 | 4 |

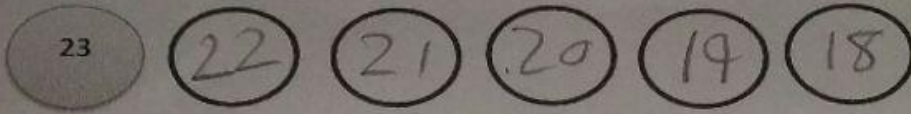
c. Cross out to subtract.

$15 - 9 =$ 6



d. Count backward and subtract.

$23 - 5 = \underline{18}$



Q3. Solve the questions.

a. Subtract the following.

| | T | O |
|--|---|---|
| | 4 | 3 |
| | | 7 |
| | 3 | 6 |

(-)

| | T | O |
|--|---|---|
| | 7 | 5 |
| | 1 | 9 |
| | 5 | 6 |

(-)

| | T | O |
|--|---|---|
| | 8 | 2 |
| | 7 | 8 |
| | 0 | 4 |

(-)

b. Solve it.

Rohan has 25 toffees. He gives 15 toffees to his friend Rahul. How many toffees left with him?

| |
|---------------------------------|
| Number of toffees Rohan has |
| Number of toffees he gives away |
| Number of toffees left with him |

| | T | O |
|--|---|---|
| | 2 | 5 |
| | 1 | 5 |
| | 1 | 0 |

(-)

So, he has 10 toffees now.