

Pallavi Nayak - Worksheet - Ch - 13 - Geometry -
Sch. no. 6504 - Sec - D - Class - IV -

A1. Line segment has two end points.

2. Line has no end points.

3. The lines or line segments which cross each other at any point are known as intersecting lines.

4. The length of the boundary of a circle is known as its circumference.

5. Diameter = $2 \times$ Radius

B6. Radius = $\frac{\text{Diameter}}{2}$

b) Diameter

7. Diameter is twice the radius of a circle.

a) Twice

8. The lines which do not meet at any point no

in whatever direction we continue, are known as Parallel lines.

b) Parallel

a) A line has no end points.

c) No

10. $D = 2 \times R$

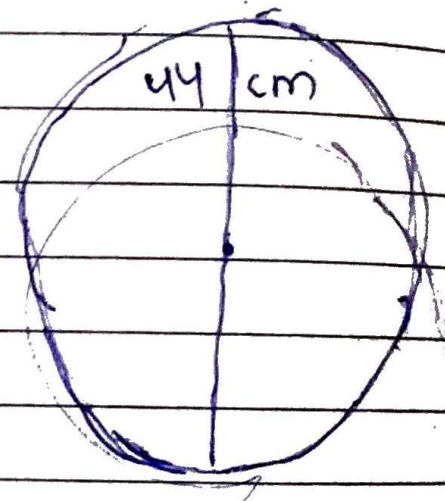
a) R

C 11 Ans - Diameter = 44 cm

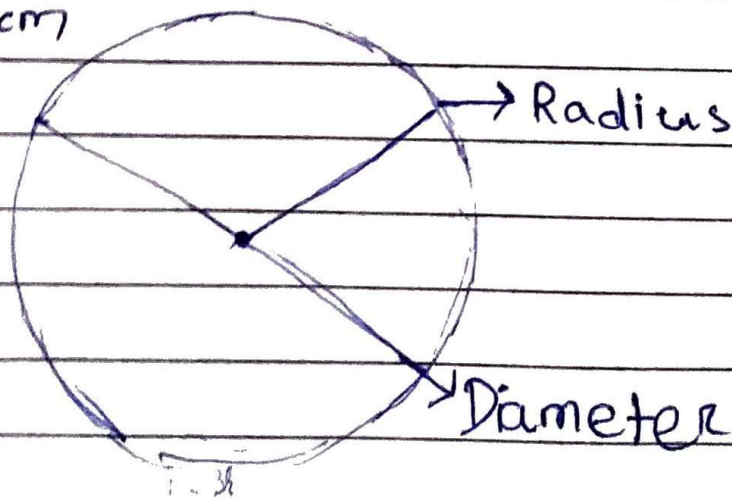
$$\text{Radius} = \frac{\text{Diameter}}{2}$$

$$R = \frac{44}{2} = 22 \text{ cm}$$

$$R = 22 \text{ cm}$$



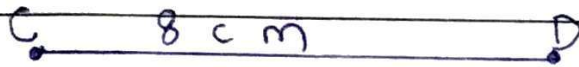
12 Ans.



Names of 3 circular objects.

- Bangle
- Plate
- Bicycle wheel

13 Ans.

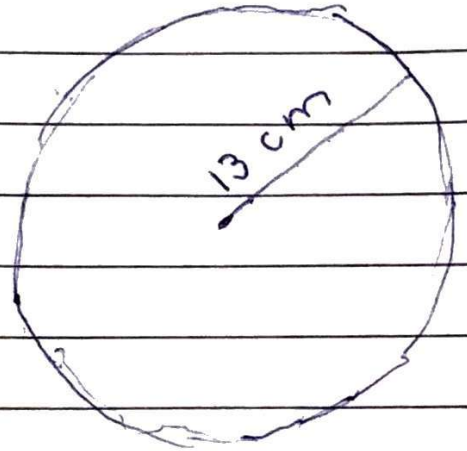


14 Ans - Radius = 13 cm

$$\text{Diameter} = 2 \times R = 2 \times \text{Radius}$$

$$D = 13 \times 2 = 26 \text{ cm}$$

$$D = 26 \text{ cm}$$



15 Ans - Parallel lines



Intersecting lines

