

# Our Skeletal system

ch-9

(Worksheet)

Date  
Page

I. Choose the correct answer

1. The cardiac muscles are found in the (C) Heart
2. The uppermost vertebra in the neck is b) Atlas
3. The joint in the d) Skull is immovable.
4. There are 14 bones in the facial region.
5. The forelimbs are joined to the spine with the help of the b) Shoulder girdle

II. Fill in the blanks.

1. The skull is made up of 22 bones.
- 2) Femur ~~Back bone~~ is the longest bone in our body.
- 3) The lowest two pairs of ribs are called Floating ribs.

4) White blood cells and red blood cells are produced by the hollow bones.

5. A hinge joint is like the hinges in a door.

III. Complete the series.

1. Bone to bone : ~~Bones~~ <sup>Ligament</sup>

∴ Bones to muscles : tendons

2. Brain : skull ∴ spinal cord : Backbone

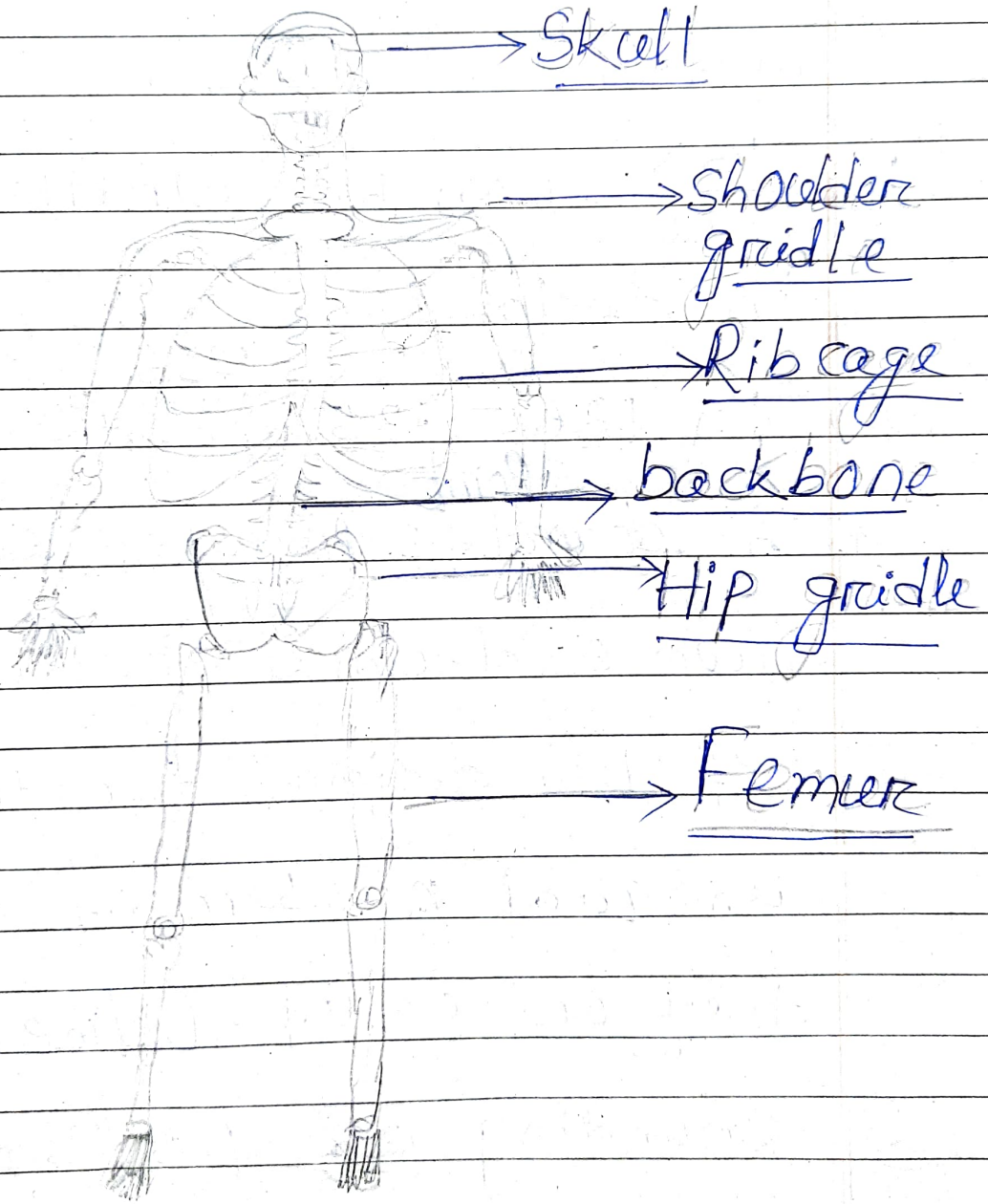
3. Joints in the skull : Immovable joint ∴ Joints in the lower jaw : movable joints

4. Muscles in our hand : Voluntary muscles ∴ Stomach muscles : involuntary

5. Hip : Ball and socket joint ∴ wrist : Gliding joint

iv. Label the various parts of skeletal system.

Diagram



Human skeleton