

Chapter-15
Geometry (Worksheet)

A. Fill in the blanks.

1. An angle measuring 180° is called a Straight angle.
2. The common starting point of an angle is called the vertex of the angle.
3. A Right angle measures 90° .
4. To measure an angle in degrees, we use a Protector.
5. A triangle whose all sides are equal is called a Equilateral triangle.

B. MCQ.

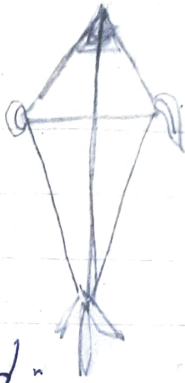
- 6) A line segment has two end points.
None of these.
- i) One end point ii) no end points iii) two end points
iv) none of these.
- 7) Which of the following represents a line?
? i) Side of a square.

8) A Point has no length, breadth or thickness

9) Point

Identify which the following is trical?

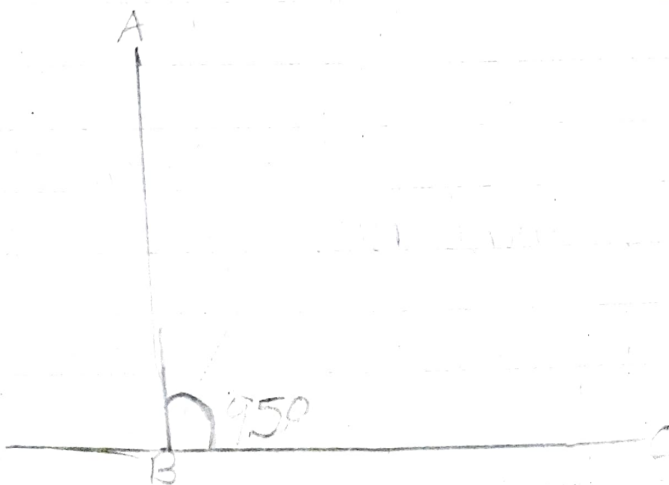
iii -



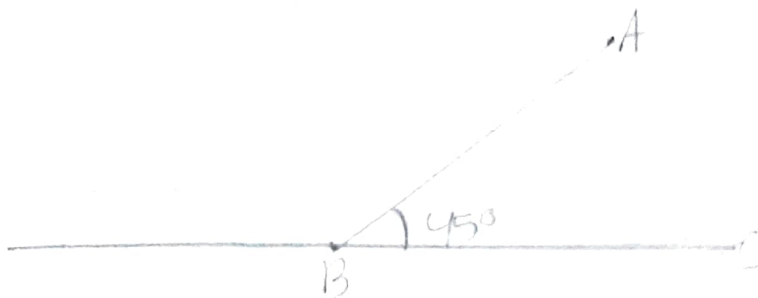
c) Do as Directed.

10) Draw the angle using a protractor

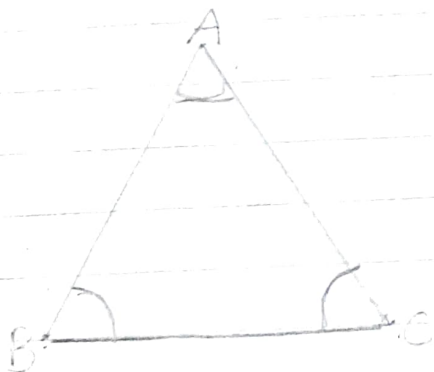
i) $95^\circ \rightarrow$



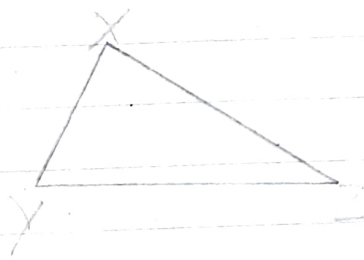
10/15



11. What type of triangle are these?



Equilateral
triangle



Scalene
triangle

12) The area of triangle,

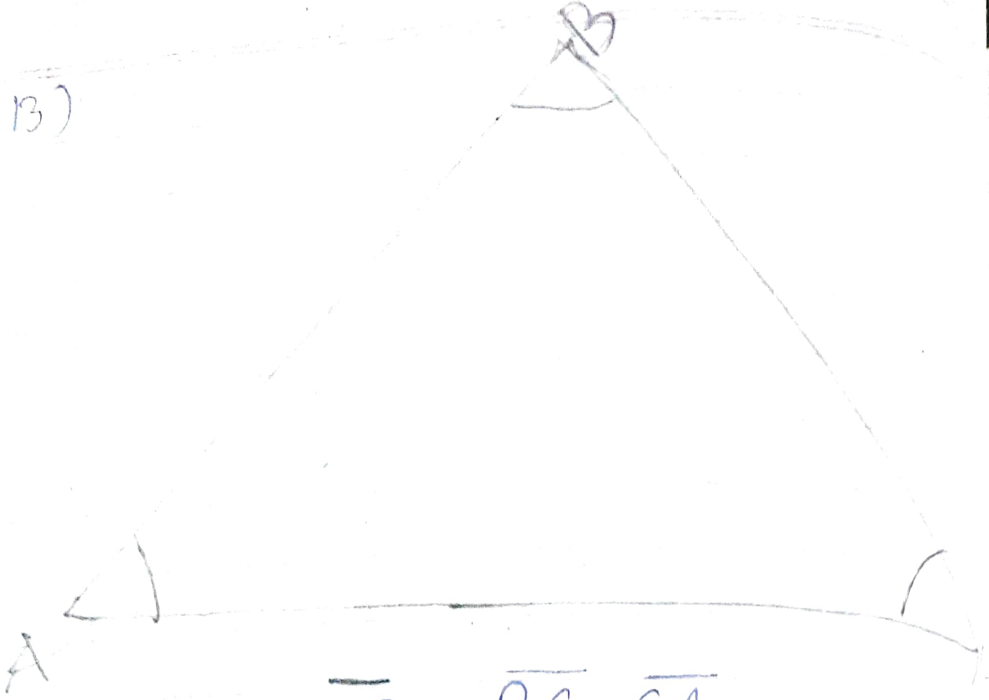
Ans-Base of triangle = 18 cm

height of triangle = 15 cm

Area of triangle = $\frac{1}{2} \times \text{base} \times \text{height}$

$$= \frac{1}{2} \times 18 \times 15 = 135 \text{ cm}$$

13)

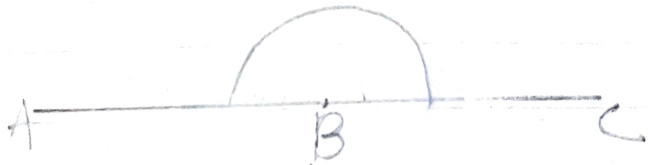


Sides - \overline{AB} , \overline{BC} , \overline{CA}

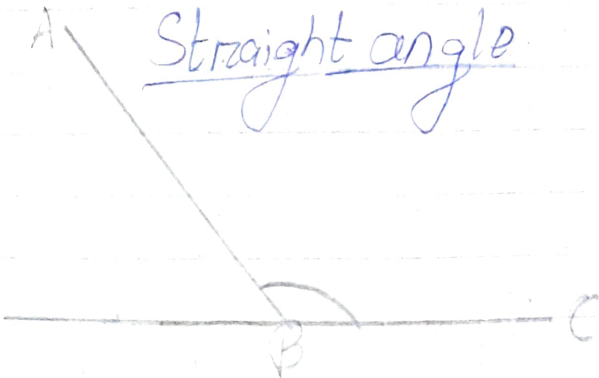
Angles - $\angle ABC$, $\angle BCA$, $\angle CAB$

Vertices = \underline{A} , \underline{B} , \underline{C}

14)



Straight angle



Obtuse angle