

# Homework

- 1) What is the structural and functional unit of kidney?
- 2) How do unicellular organisms excrete their waste?
- 3) Do plants have particular excretory organ?
- 4) Name the excretory product and the excretory organ in:-

	Excretory product	Excretory organ
a) man	urea	kidney
b) bird	uric acid	kidney
c) fish	uric acid	gill

5) Complete the following paragraph.

Blood is filtered by the kidney ~~nephrons~~ which turns waste into a chemical called urea. Then the nephron filter the urea out the blood and mix it with water. The urine then travels through the ureter to the muscular bag called the urinary bladder. The urine leaves the body through the urethra.

- 1) Nephrons
- 2) Unicellular organisms excrete their waste by diffusion.
- 3) No

9) Identify the part of Human urinary system that exhibits the following function:

### Organs

### Functions

Urethra

Carries urine from the bladder to the outside of the body.

Renal vein

Carries deoxygenated blood away from the kidney.

Medulla

The inner region of the kidney.

Urethra

Muscle that opens to allow urine to be removed from the bladder.

Cortex

The outer region of the kidney.

Renal artery

Carries oxygenated blood to the kidney.

collecting duct

The part of the kidney that collects the urine before it passes down the ureter.

## Capsule

The tough fibrous coat around the kidney.

## Urinary bladder

Stores urine before it is removed from the body.

## Ureter ~~collecting duct~~ ~~connecting duct~~

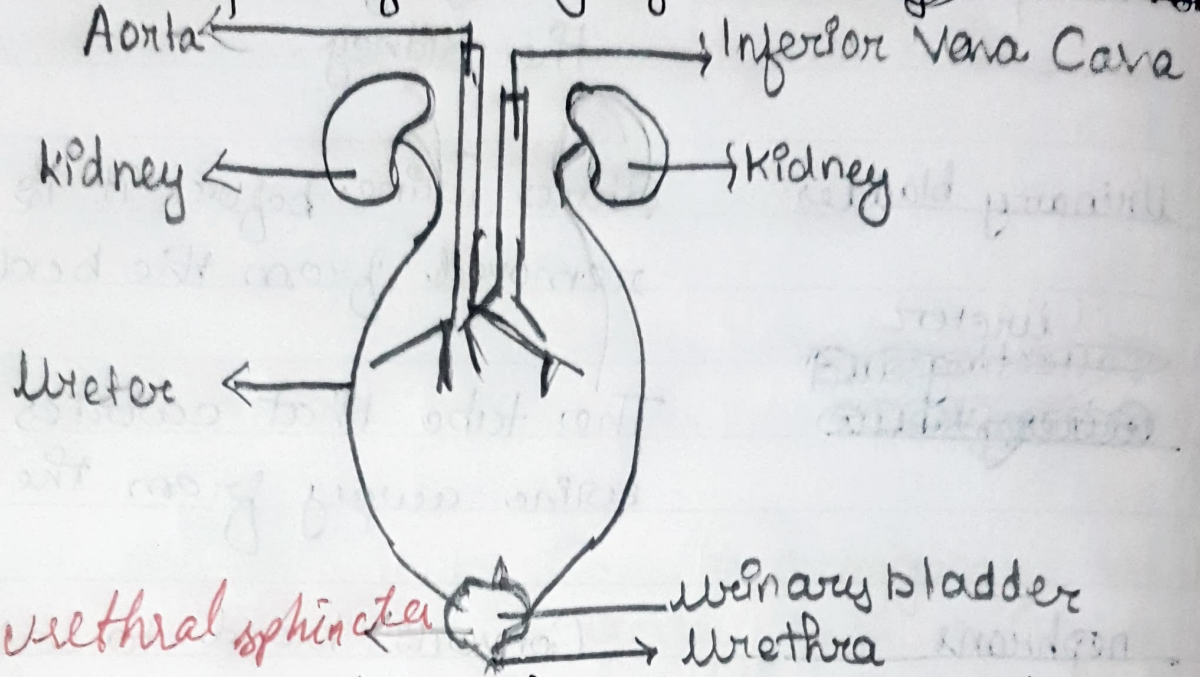
The tube that carries urine away from the kidney.

## nephrons

Converts blood to urine.

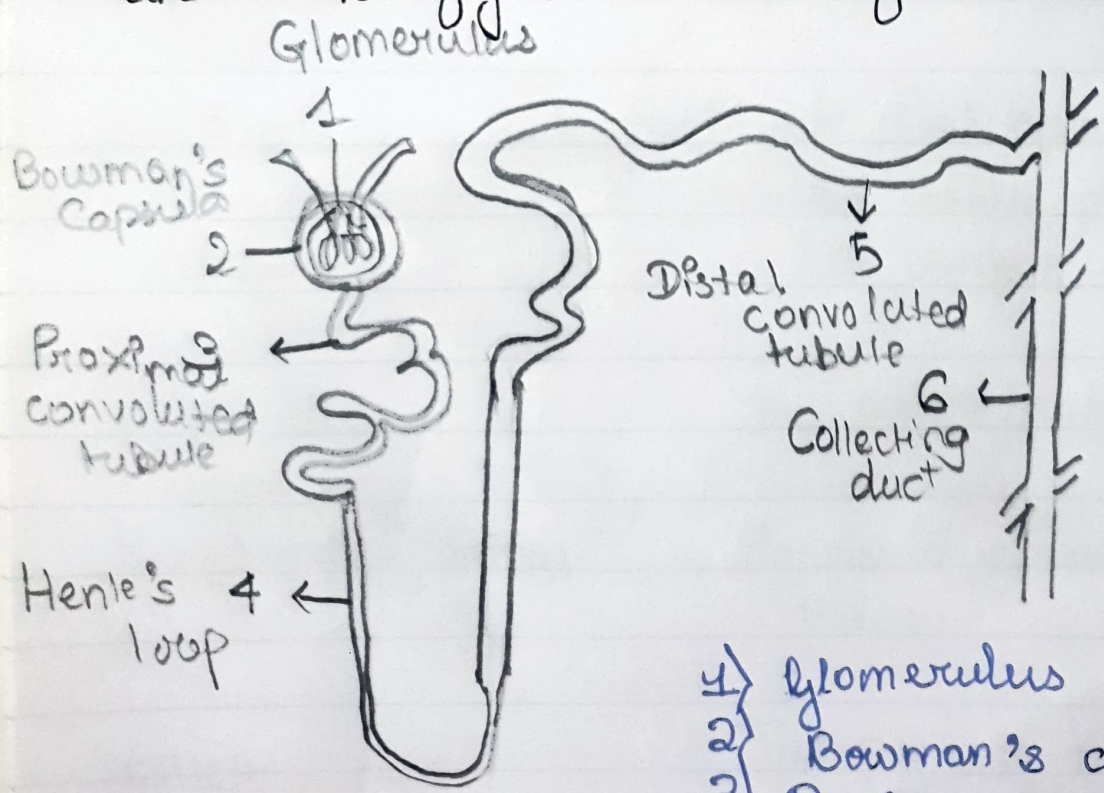
8

Label the parts of Urinary System ~~of the body~~



urethral sphincter

Identify and label the following parts of the Nephron and briefly describe their function.



- 1) Glomerulus
- 2) Bowman's capsule
- 3) Proximal convoluted tubule
- 4) Henle's loop
- 5) Distal convoluted tubule
- 6) Collecting duct