

place value and face value

Q.1.

A place value and face value will be the same ones place

B 71 has more tens.

C The place value of 3 in 31 is 30

d 9 comes just before the smallest 2 digit number

e The number system contains 10 digits.

Q2

A The face value of 7 in 75 is

7. True

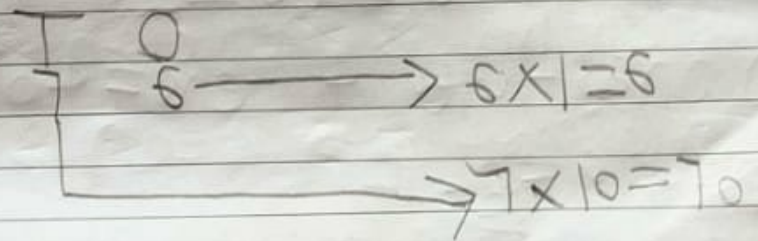
B The place value of 5 in 65 is 5 tens. False.

C Each spike in an abacus can have maximum 9 beads only. True

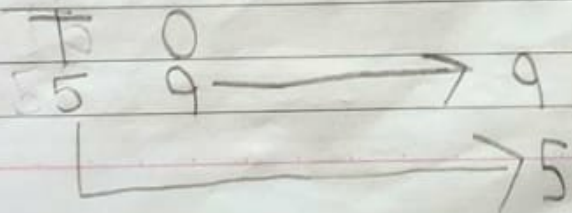
D Expanded form of 95 is equal to $9 + 5$. False

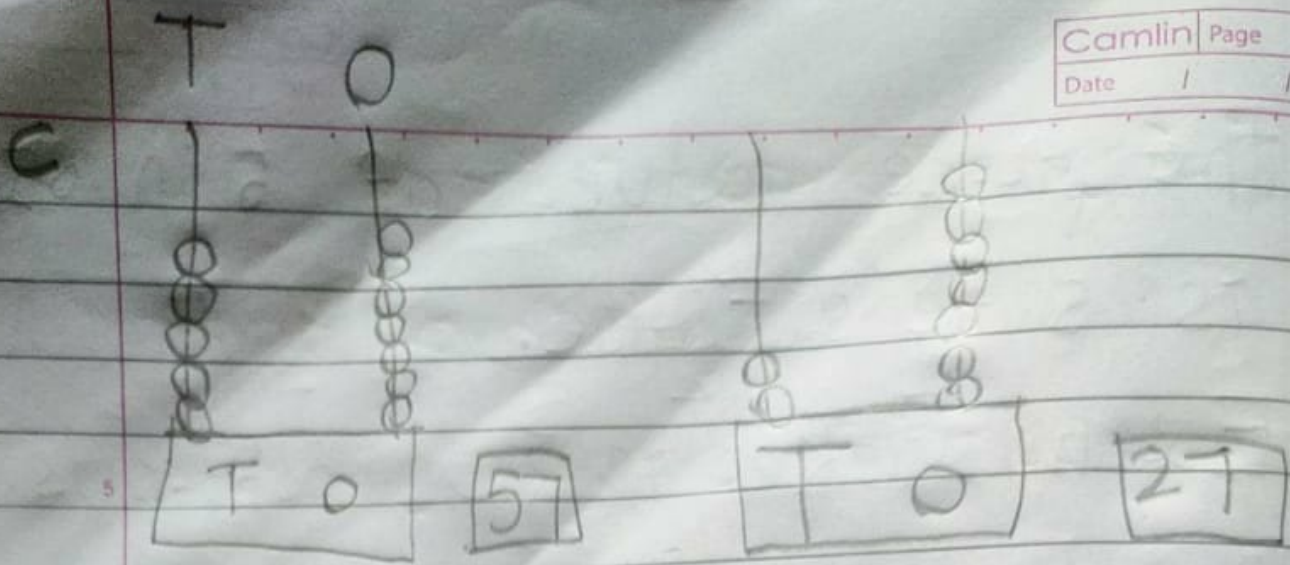
E Compact form of $30 + 6 = 35$. True

Q3



b





$$d \quad 97 = 90 + 7$$

$$10 \quad 72 = 70 + 2$$

$$56 = 50 + 6$$

$$23 = 20 + 3$$

$$15 \quad e \quad 60 + 4 = 64$$

$$5 \text{ tens} + 8 \text{ ones} = 58$$

$$20 \quad 0 \text{ ones and } 4 \text{ tens} = 40$$

$$30 + 9 = 39$$