

Ch-15

Geometry

WORKSHEET

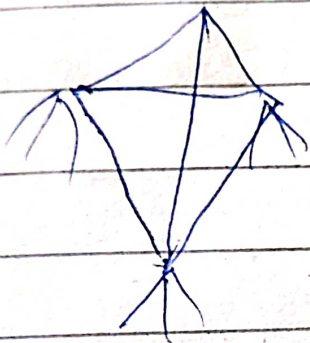
1. An angle measuring 180° is called a straight angle.
2. The common starting point of an angle is called Vertex of the angle.
3. A right angle measures 90° .
4. To measure an angle, we use protractor.
5. A triangle whose all sides are equal is called equilateral triangle.

6. (ii) Two end points

7. (iii) Axes of the earth

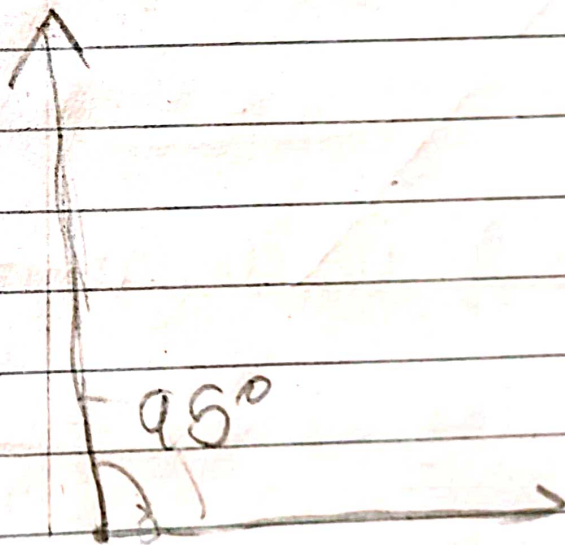
8. (i) point

9. (ii)

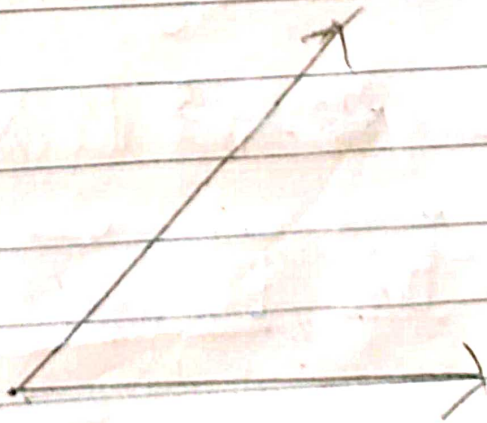


10.

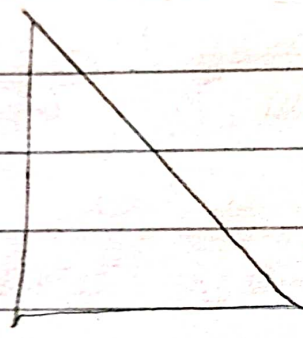
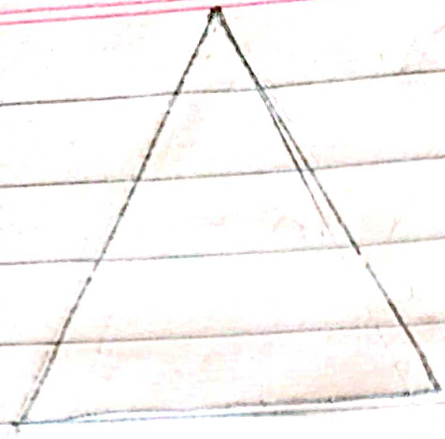
(a)



(b)



11.



12. Area of Triangle = $\frac{1}{2} \times B \times H$

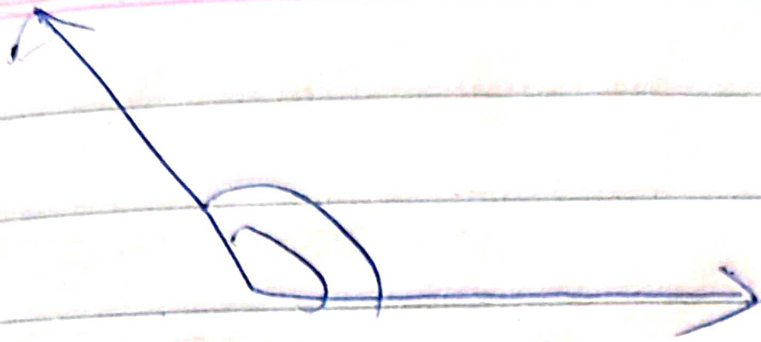
$$A = \frac{1}{2} \times \del{18} \del{18} 18 \times 16 = 144 \text{ cm}^2$$

13. Sides \overline{BA} , \overline{BC} , \overline{AC}

Angles = ~~$\angle BAC$~~ $\angle BAC$, $\angle CBA$, $\angle ABC$

$\overline{MA} \leftarrow \bigcirc \rightarrow$ = Straight angle

(b)



Obtuse angle