

Chapter-15

Geometry

WORKSHEET

Date _____

Page _____

NAME - PALLAVI NAYAK

STD - V

SEC - C

DATE - 26.12.21

A. Fill in the blanks.

1. An angle measuring 180° is called a straight angle.
2. The common starting point of an angle is called the vertex of the angle.
3. A right angle measures 90° .
4. To measure an angle in degrees, we use a protractor.
5. A triangle whose all sides are equal is called Equilateral triangle.

B. Choose the correct answer.

6. A line segment has two end points

- i) One end point ii) no end points
iii) two end points iv) none of these

7. Which of the following represents a line ?

- i) Side of a square ii) edge of a cube
iii) axis of earth

8. A line has no length, breadth or thickness.

- i) point ii) line iii) line segment iv) ray

9. Identify which of the following is symmetrical

ii)



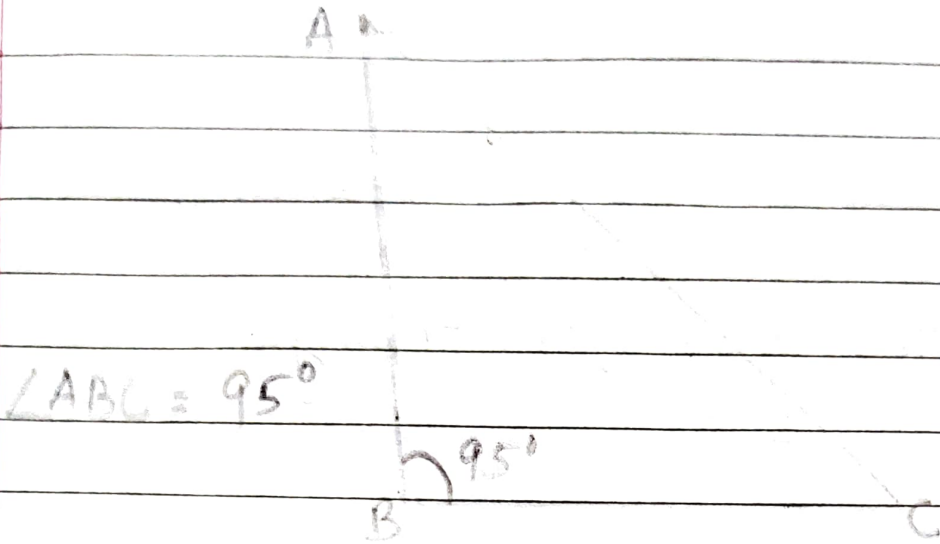
C. Do as directed.

10. Draw the following angles using a protractor.

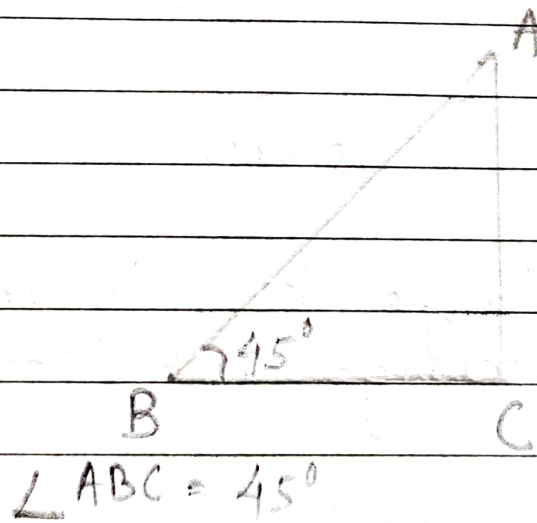
a) 95°

b) 45°

a) Ans -

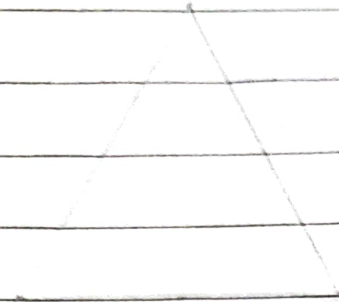


b) Ans -

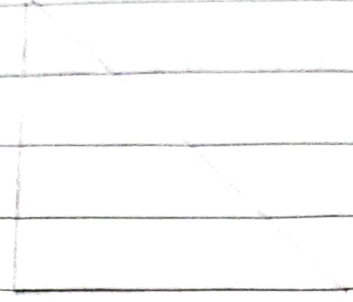


11. What type of triangles are these?

a)

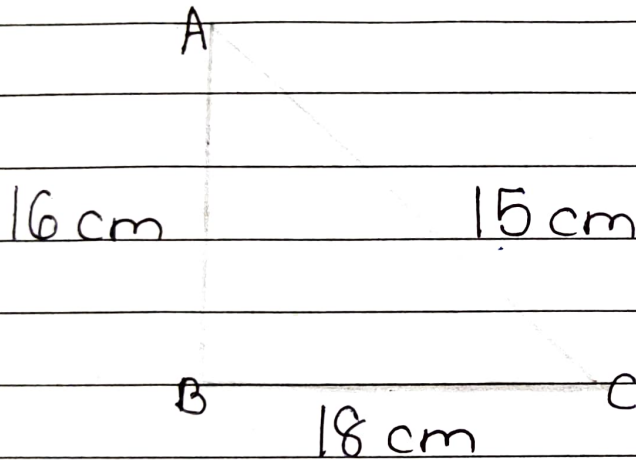


b)



Equilateral Triangle Isosceles triangle

12. Find the area of the triangle.

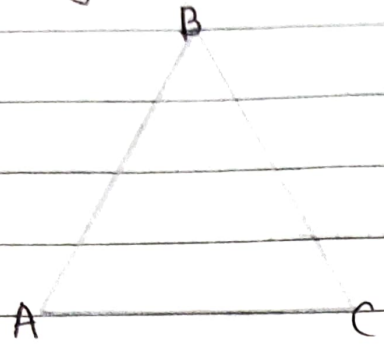


Ans - Base of triangle (BC) = 18 cm
Height of triangle (AB) = 16 cm

$$\text{Area of triangle ABC} = \frac{1}{2} \times b \times h$$

$$= \frac{1}{2} \times 18 \times 16 = 144 \text{ cm}$$

13. Name the sides, angles and vertices of the given triangle.

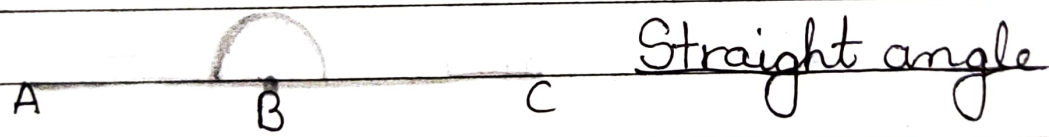


Sides = AB, BC, CA

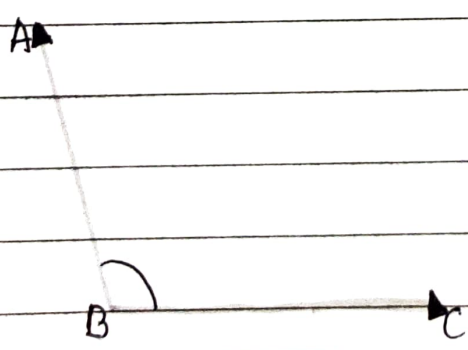
Angles = $\angle ABC$, $\angle CBA$, $\angle BAC$

Vertices = A, B, C

14. Classify each angle as acute, obtuse, right or straight.



Straight angle



Obtuse angle

End