

Geometry

Worksheet

A. Fill in the blanks -

1. Line segment has two end points.
2. Line has no end points.
3. The lines or line segments which cross each other at any point are known as intersecting lines.
4. The length of the boundary of a circle is known as its circumference.
5. $\text{Diameter} = 2 \times \text{Radius}$

B. Choose the correct answer.

6. $\text{Radius} = \frac{\text{Diameter}}{2}$

- a. centre b. Diameter c. Circumference
d. None

7. Diameter is _____ the radius of a circle.

- a. Twice b. Once c. Thrice d. None

8. The lines which do not meet at any point no matter in whatever direction we continue, are known as parallel lines.

2. Intersecting b. Parallel c. Curved

1. None

0. A line has _____ end points

a. One b. Two No d. Three

10. D = 2X _____

R b. P c. 5. d. None of

5. Answer the following questions

1. Find the radius of the circle whose diameter is 44cm.

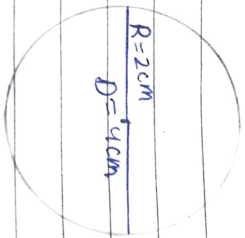
$$D = 44 \text{ cm}$$

$$R = \frac{D}{2}$$

$$= \frac{44}{2}$$

$$R = 22 \text{ cm}$$

12. Draw a circle and also mention its radius and diameter. Also write 3 circular objects name that you see in your day to day life.



Three circular objects are -
clock, Bangle, Wheel

14. Find the diameter of the circle whose radius is 13 cm

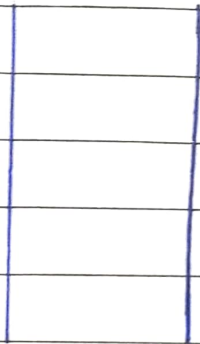
$$R = 13 \text{ cm}$$

$$D = 2 \times R$$

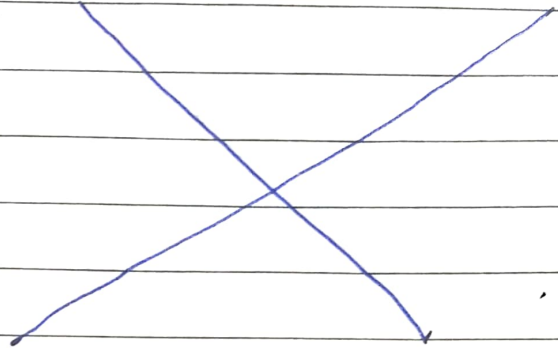
$$= 13 \times 2$$

$$= 26 \text{ cm}$$

16. Draw an example of parallel line and intersecting line.



Parallel line



Intersecting line