

Worksheet

CH-7 / Geometry

1. Fill in the blanks

(a) The 2-D shapes has two length and width.

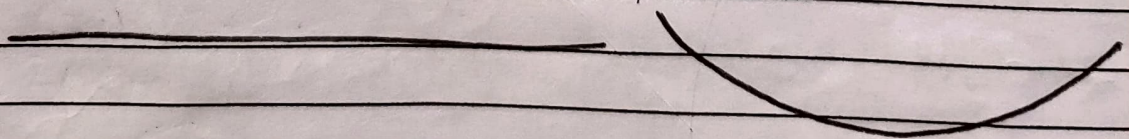
(b) A shape that has 3 sides is Triangle.

(c) There are 6 faces of a cube.

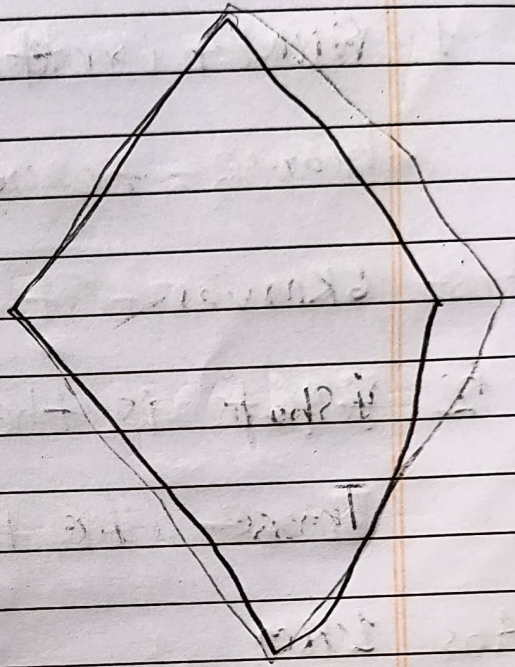
(d) The cylinder 3-D shapes has no vertex but has flat faces.

2. Do as directed

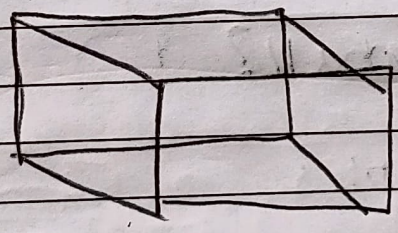
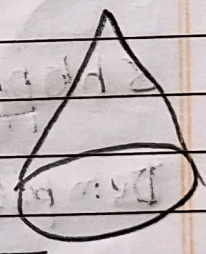
(a) Draw a curved line and a straight line.



(B) Draw a hexagon and a rhombus.



(C) Fill up

Shapes		
Name	Cube	Cone
Flat Faces	6	1
Vertices	8	1
Straight edges	12	0

(b) Find out

1 What is the distance from your house to your aunt's house?

Ans- 6km

2 What is the distance from your aunt's house to the milk booth?

Ans 1km

3 What is there opposite to the shopping mall?

Ans Temple

4 Everyday how many Kilometers do you need to walk to go to school and return back from the school?

Ans- 9km