

Chapter - 10

Nervous System

pg - 1

Date _____
Page _____

1. The control centre of the body.

Ans Brain

2. The coloured part of the human eye.

Ans Iris

3. The nerve joining the eye to the brain.

Ans Optic nerve

4. The opening through which light enters the lens.

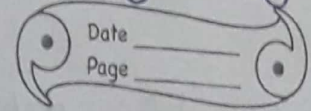
Ans Pupil

5. The main organ of taste.

Ans Tongue

Chapter - 10
Nervous System

pg - 2



11. Fill in the blanks.

1. Ears helps us to balance our body.

2. The largest part of the brain is the cerebrum.

3. An adult human brain weights about 1.4 kilo-grams.

4. The spinal cord is enclosed inside the tough, bony but flexible spine.

5. The organs which connect us to the outside world are known as organ system.

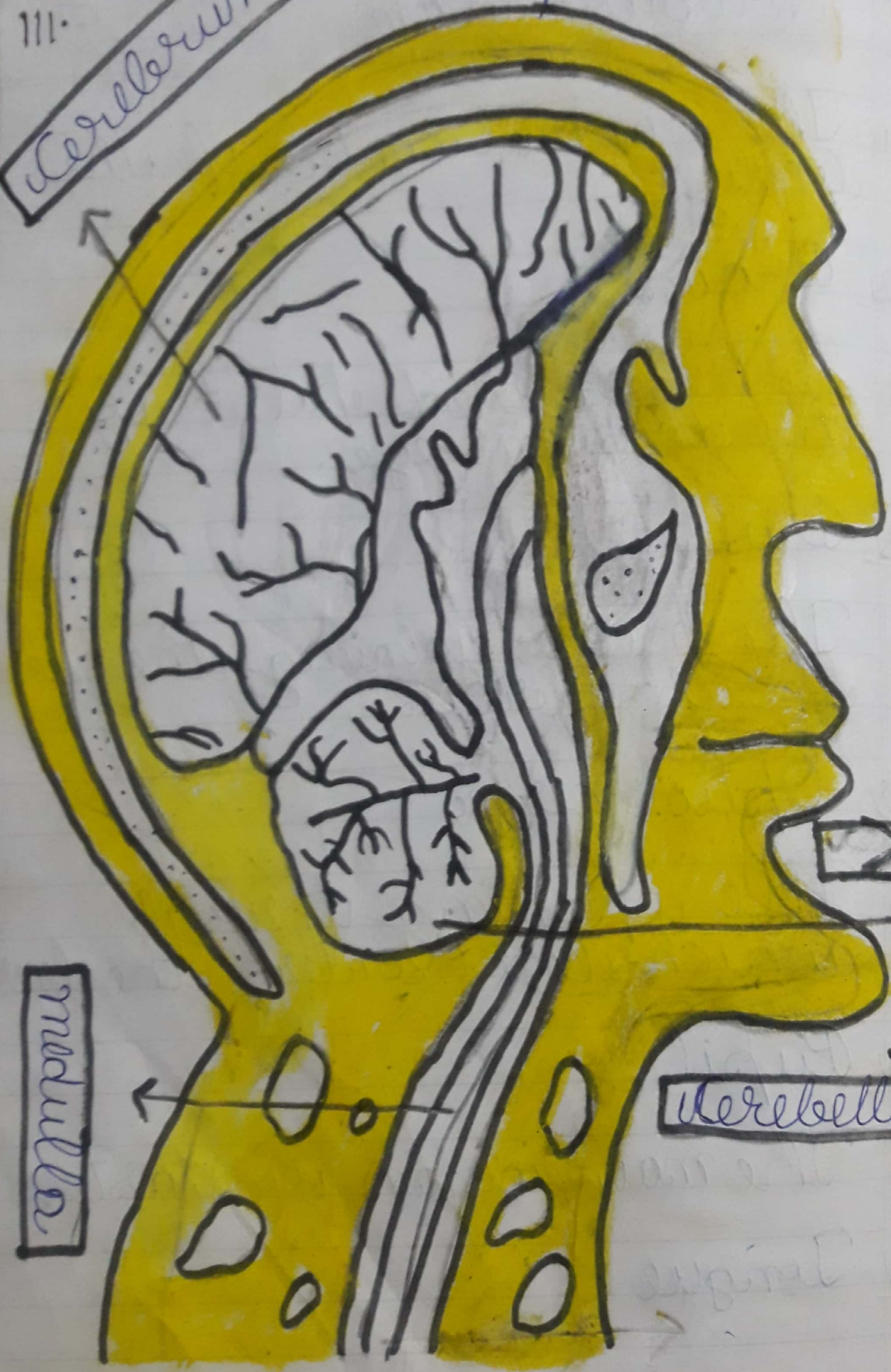
6. Reflex actions are sudden and automatic which are controlled by the spinal cord.

Skull



111.

Cerebrum



Medulla



Cerebellum



Fig-4

IV. Draw the diagram of eye

