

Time

1. Fill in the blanks.

a. Thursday comes after wednesday.

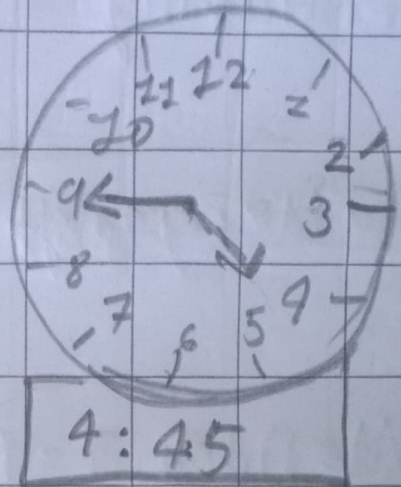
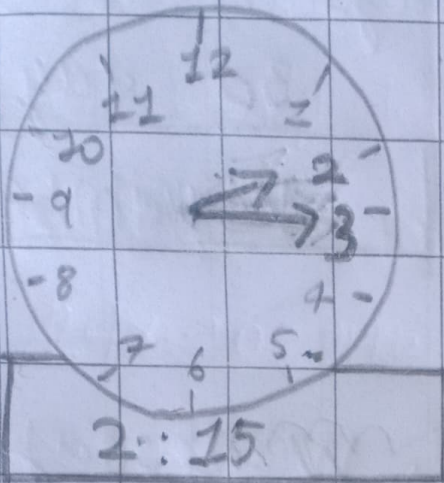
b. July comes before August.

c. Republic Day celebrated on 26th of January.

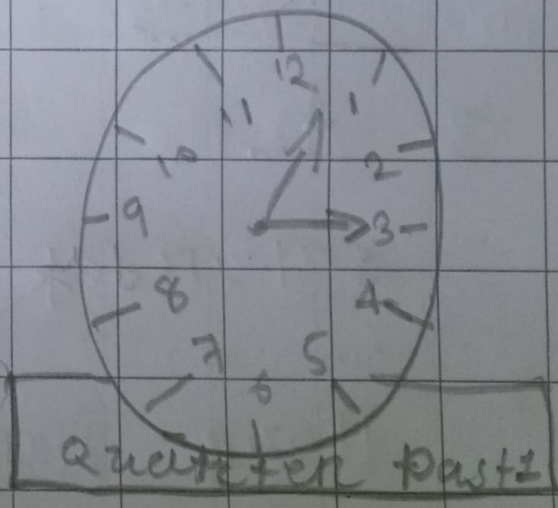
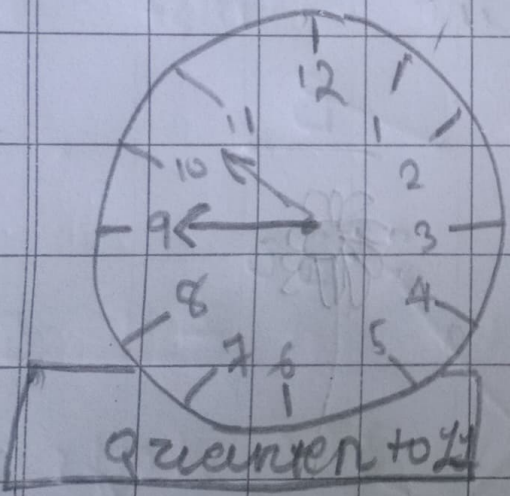
d. The longer hand is the minute hand.

e. The time from midnight to noon is known as am.

a.2. Do as directed.



b.



c. Which days are known as weekend?

Saturday | Sunday

d. Having 31 days | Having 30 days

July

November

e. Monday, Tuesday, Wednesday
Thursday, Friday

3. A | B

