

Q12 MCQs

i) The flower of the Hibiscus plant is

Ans) Bisexual.

ii) The part of the flower which is present in the centre of the flower is

Ans) carpels.

iii) Reproduction is essential for living organisms in order to continue the species generation after generation.

iv) The male reproductive part of a flower, the stamens are collectively known as

Ans) Androecium.

Q2) Define the terms unisexual and bisexual giving one example of each.

Ans) Unisexual - An individual may be either male or female such organisms are called unisexual that i.e. they have only one sex in one individual. Some plants are also unisexual such as papaya, ascorbites.

Bisexual - But majority of flowering plants and animals like tapeworm, earthworm, garden snail, starfish etc are bisexual or hermaphrodite.

i.e. they have both male and female sex organs.

Q3) Draw a longitudinal section of a flower and label the following parts;

i) Part that produces pollen grains.

Ans) Anther

ii) Part that transfers male gametes to the female gametes

Ans) Pollen grains

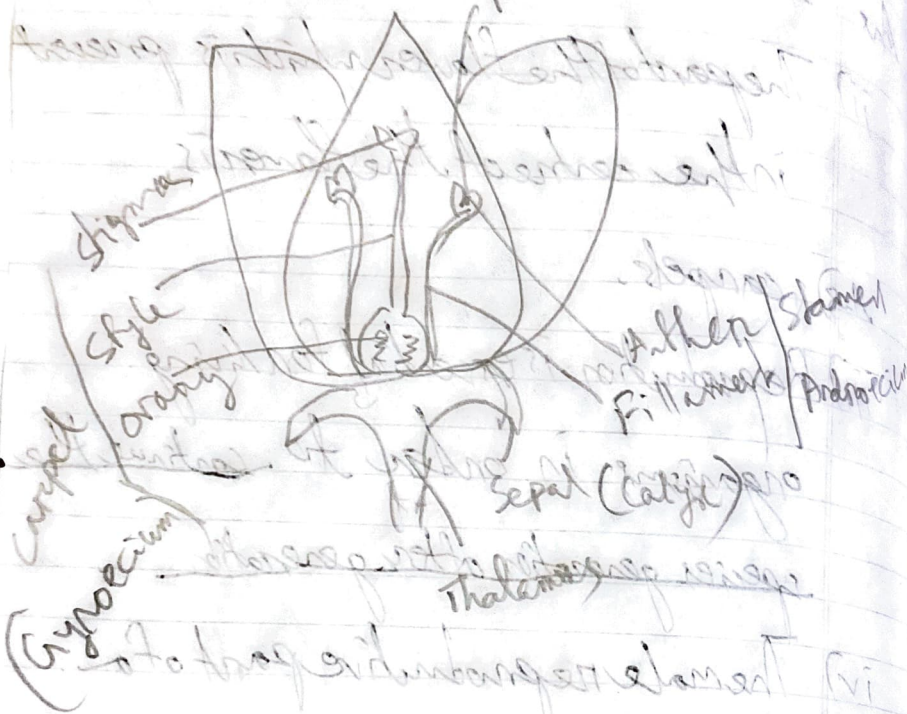
iii) Part that is sticky to trap the pollen grain - Stigma

iv) Part that develops into a fruit

Ans) Ovary

85M

The female part is
Anther



to trap and bring element
plant also are involved, what

to want

mineral A PA