

Ex-6.1

Q1) Fill in the blanks

- i) All circles are similar
- ii) All squares are similar
- iii) All triangles are similar Equilateral.
- iv) Two polygons of the same number of sides are similar if (a) their corresponding angles are equal and (b) their corresponding sides are proportional.

Q2) Give two different examples of pair of

i) similar figures

Ans: a) Pair of Equilateral triangles.

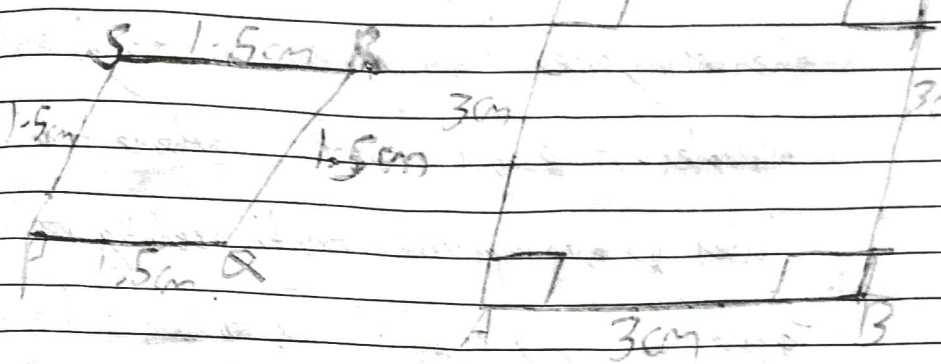
b) Pair of squares

ii) non-similar figures

a) A square and a circle.

b) A rectangle and a triangle.

Q3) State whether the following quadrilaterals are similar or not.



Ans) No, the sides of quadrilateral PQRS and ABCD are proportional but their corresponding angles are not equal.

∴ These are not similar.

Two triangles are similar if

i) their corresponding angles are equal
or

ii) their corresponding sides are in the same ratio (or proportion).