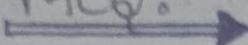


REVIEW QUESTION

A. MCQ: 

(a) In a germinating seed, the roots developed from

- (i) Radicle
- (ii) Plumule
- (iii) Tegmen
- (iv) Hilum

(b) In a germinating seed, the shoot developed from:

- (i) Radicle
- (ii) Plumule
- (iii) Tegmen
- (iv) Hilum

(c) Which one of the following is a monocotyledonous seed

- (i) Bean
- (ii) Pea
- (iii) Maize
- (iv) Gram

Q) If the cotyledons remain above the soil, then such type of germination is called is:

- (i) Epigeal (ii) Hypogeal
 (iii) Perigeal (iv) Progeal

Q) If the cotyledons remain under the soil, then such type of germination is called:

- (i) Epigeal (ii) Hypogeal
 (iii) Perigeal (iv) Progeal

Q) Pollen is produced in the:

- (i) Filament (ii) Style
 (iii) Pistil (iv) Anther

Q) Reproductive whorls of a flower are:

- (i) Stamens and Carpels
 (ii) Sepals and Petals
 (iii) Sepals and stamens
 (iv) Petals and Carpels

(h) Which one of the is false fruit

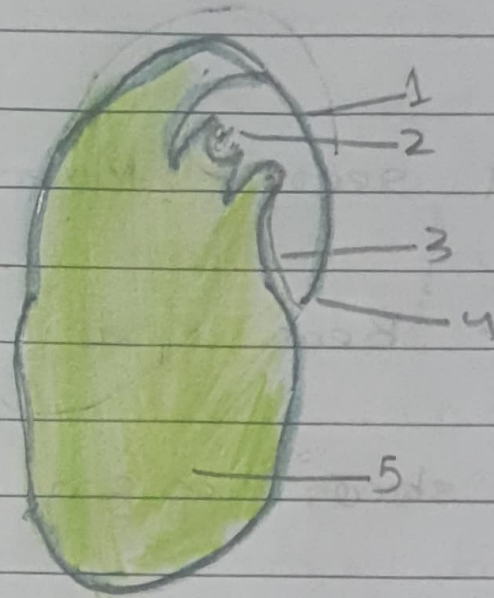
- (i) Tomato
- (ii) Apple
- (iii) Potato
- (iv) Cotyledons or endosperm

(i) In a seed food is generally stored in :

- (i) Radicle
- (ii) Plumule
- (iii) Fruit
- (iv) Cotyledons or endosperm

B. Short Answer Questions :

1. Given below is a longitudinal section of bean seed. Label the parts Marked 1 to 5 and write their function.



1. Testa : It is the outer exposed part of the seed.
2. Plumule : It is located between the two cotyledons and develops into a shoot.
3. Radicle : It is located between the two cotyledons and develops into a root.
4. Micropyle : It absorbs and allows the entry of as much as water as is required for germination.
5. Cotyledon : It stores the food materials which is used by the seedling for growth.

2. Name the following:

(a) A seed which shows hypogeal germination
Pea.

(b) A monocot seed - Maize green

(c) A dicot seed - Bean seed.

(d) A seed which shows epigeal germination -
Bean seed