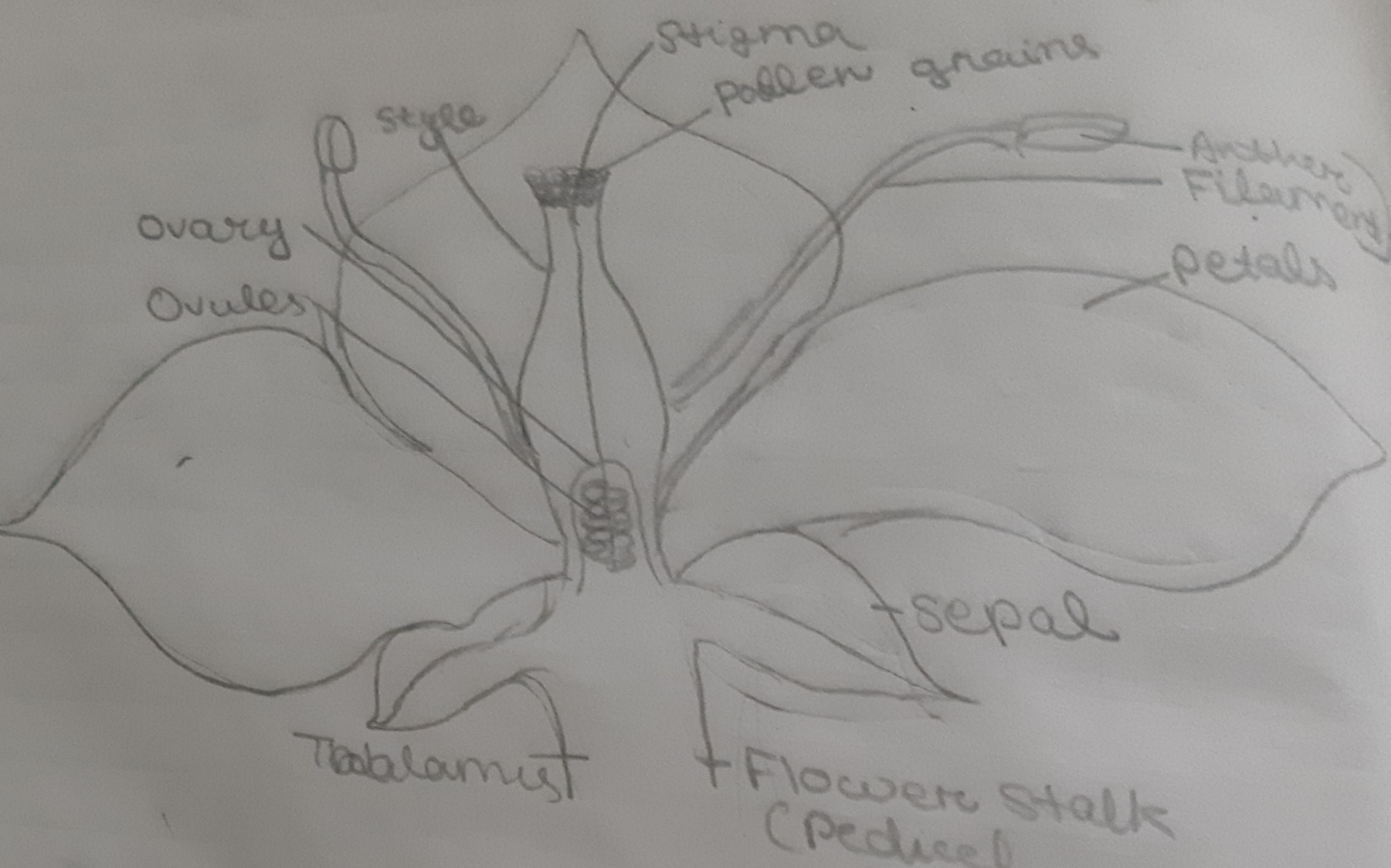


3 -

What is flower? Draw a typical flower and label its different parts.

Ans -

A flower is the most best beautiful and colour part of a plant which ~~serves~~ serves as a reproductive organ.



8- State the location of the following in a flower:

a Sepals: Sepals are the green outermost part of a flower.

b Petals: This forms the second inner whorl. Petals are the large fragrant and brightly coloured parts of the flower.

c Anthers: It is located in the third whorl of the flower. The filament of the stamen bears the anther at ^{its} tip.

d Stigma: It is located in the fourth and the innermost whorl of the flower. The style bears the stigma at its tip.

Given below is the diagram of a typical flower. Label the parts marked by guidelines.

