

1) Draw a well-labelled diagram of neuron.

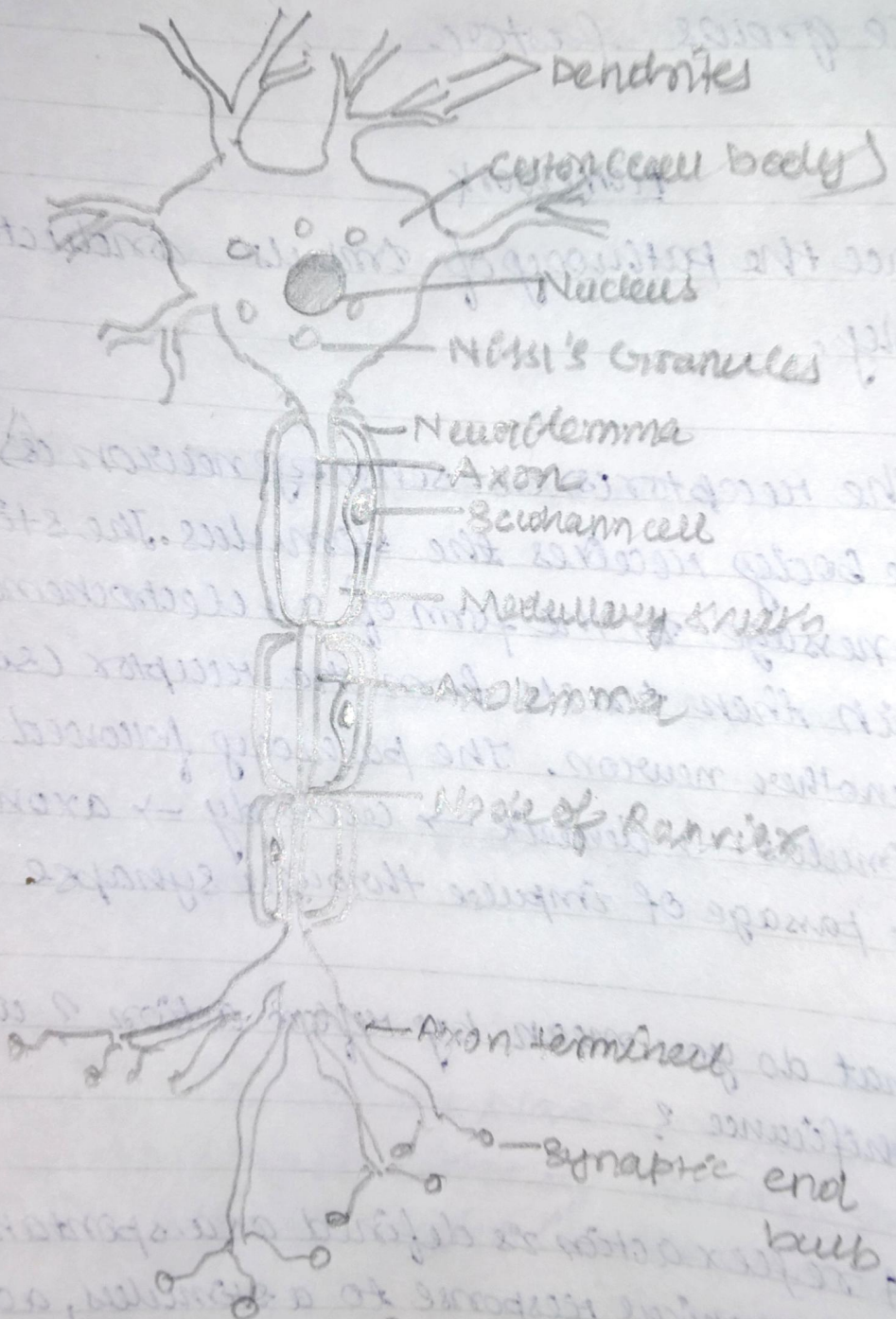


Diagram of Neuron

Homework

2. Trace the pathway of impulse conduction in your body.

ans - The receptor (s) i.e. sensory neuron (s) present in the body receives the stimulus. The stimulus generates a message in the form of an electrochemical impulse which then travels from the receptor (sensory neuron) to another neuron. The pathway followed is:
Stimulus \rightarrow dendrite \rightarrow cell body \rightarrow axon \rightarrow axon terminal
 \rightarrow passage of impulse through synapse

3. What do you mean by reflex action? what is its significance?

ans - A reflex action is defined as a spontaneous, automatic and mechanical response to a stimulus, acting on a specific receptor, without the will of an animal. The receptors present on various body parts, receive stimuli and transmit information in the form of nerve impulses to the central nervous system. After the processing of the

Information the message is sent by coordination centres through motor neurons to appropriate regions. In certain ~~regions~~ situations, sensation requires immediate response as time used for processing may cause harm to the body. In such situations, reflex actions occur.

To classify neurons on the basis of neurites.

Ans - On the basis of neurites, neurons can be classified as +

- * Unipolar
- * Bipolar
- * Pseudounipolar
- * Multipolar
- * Apolar