

Homework

① Define the terms unisexual and bisexual giving one example of each.

ans- * The organisms in which male & female individuals are separate i.e. An individual may be either male or female are called unisexual. Ex: Papaya.

* The organisms in which male & female individuals are not separate i.e. each individual has both male and female sex organs. Ex: called bisexual/ hermaphrodite.

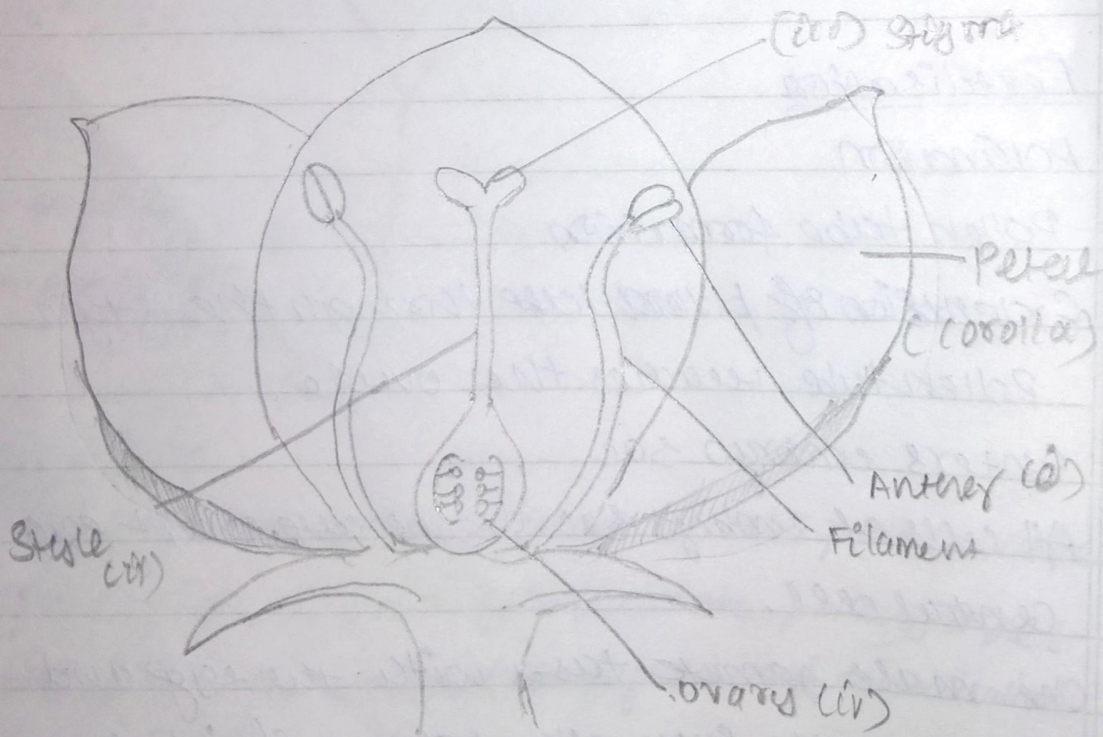


Diagram of longitudinal section of a flower.

Q 40) The flower of the hibiscus plant is
— (a) bisexual

(Q 41) The part of the flower which is present in the
centre of the flower is

— (c) carpels

(Q 42) Reproduction is essential for living organisms
in order to _____

— (d) continue the species generation after generation.

(Q 43) The male reproductive parts of a flower, the
stamens, are collectively known as

ans - (a) Androecium.