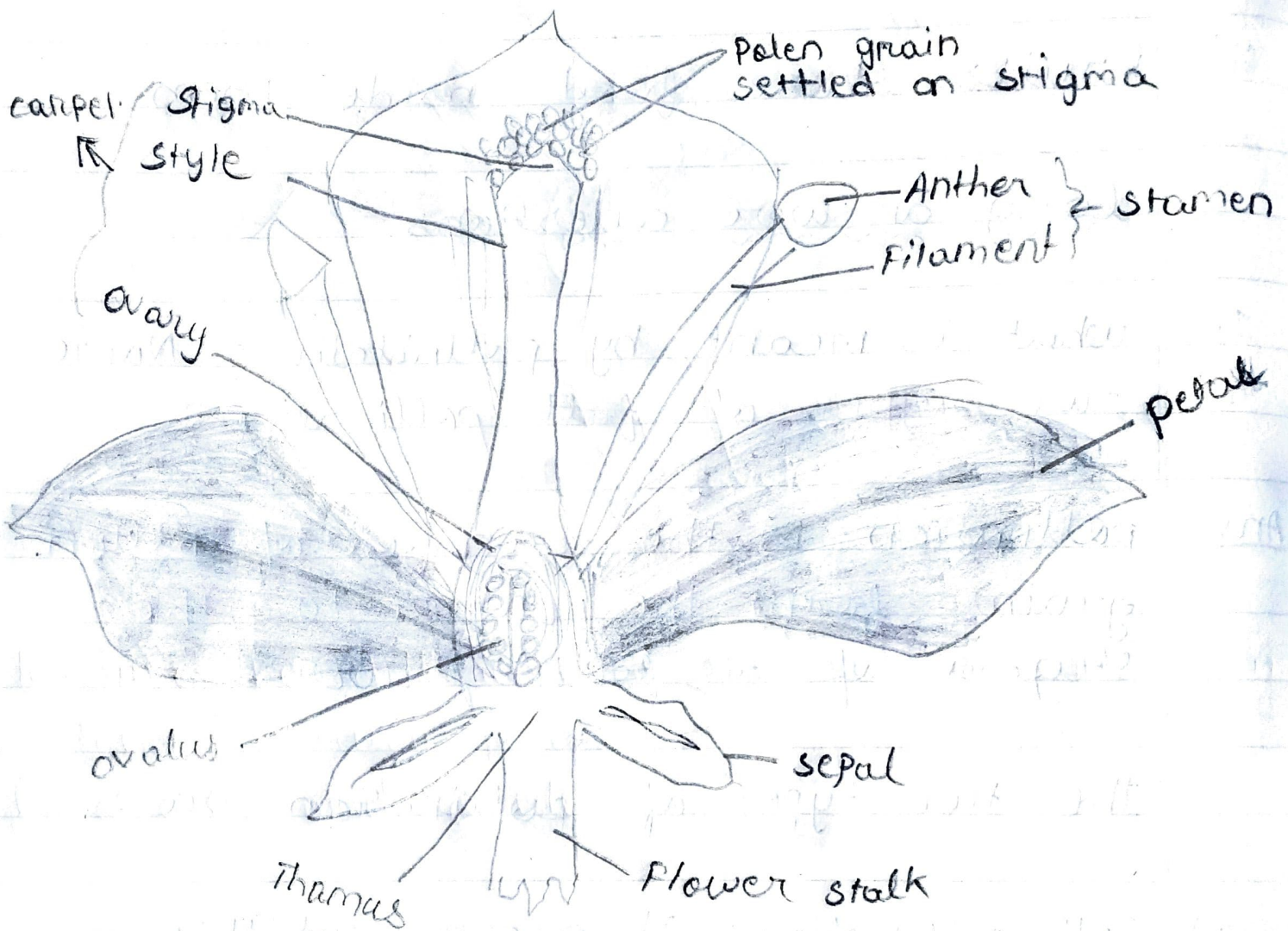


3. What is a flower? Draw a typical flower and label its different parts

Ans. A flower is the most beautiful and colourful part of plant which serves as a reproductive organ.



8. State the location of the following P in a flower?

Ans Sepals: Sepals are the green outermost part of flower.

b. petals: This forms the second inner whorl. petals are the large, fragrant and brightly coloured parts of the flower.

c. Anthers: It is located in the third whorl of the flower. The ~~stem~~ filament of the stamen bears the anther as its tip.

d. Stigma: It is located at the innermost whorl of the flower. The style bears the stigma as its tip.

9. Given below the diagram of a typical Flower
labelled the parts marked by guidelines.

