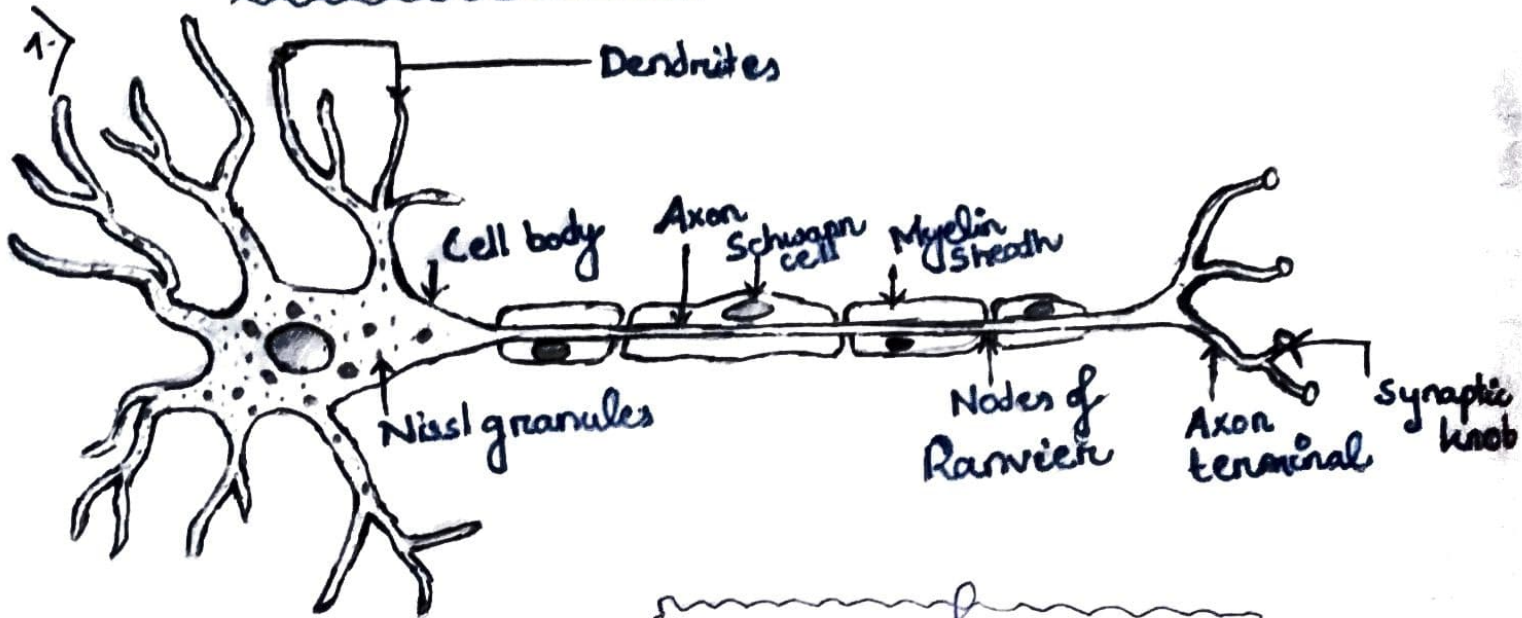


ASSIGNMENT



- diagram of a neuron

2->

The electrical impulse from the sinus node to the atrioventricular node (also called AV node) there impulses are slowed down for a very short period, then continue down the conduction pathway via the bundle of His into the ventricles.

3.) The reflex action is defined as an involuntary response of effectors to the stimulus. It allows to protect us from any sudden stimulus which may harm us. Means ensuring survival of an organism.

4.) On the basis of neurites neurons are classified into :

(a) Unipolar neurons

(b) Bipolar neurons

(c) Multipolar neurons